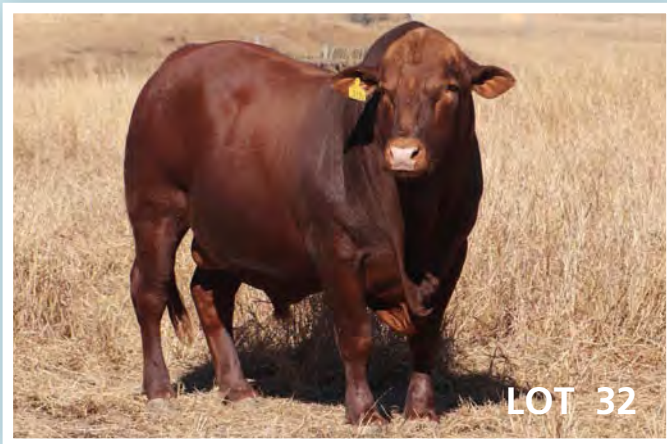


Seifert BELMONT REDS

2020 SALE **62 Bulls and 5 PTIC Heifers**

On property 30 July 'Wonga' Jandowae & AuctionsPlus
Auction 11.30am – 12.30pm



- * FREE cartage to Rockhampton, Roma and Dalby.
- * Fully BREEDPLAN recorded * DNA Poll/Horn tested * DNA Sire Verified
- * Semen Morphology and Motility * JBAS 7 - WA Eligible

Inspections from 7.00am on the day and by appointment anytime

Elders Agent: Robert Murray 0419 644 813

AuctionsPlus: Bob Jakins 0419 788 366

Ian Stark & Jeanne Seifert

'Wonga' 490 Jolimont Rd Jandowae QLD 4410

Jeanne: 0427 632 113 • Ian: 0439 632 113  

jeanne@seifertbelmontreds.com • www.seifertbelmontreds.com





WITH YOU EVERY STEP OF THE WAY

QLD

Michael Smith
P. 0428 541711
Blake Munro
P. 0428 862469
Andrew Meara
P. 0427 210634

QLD

Robert Murray
P. 0419 644813
Robert Jakins A+
P. 0419 788366
Lisa Hedges
P. 0427 891367

QLD

Ross Ruddell
P. 0418 756521
Elders Jandowae
P. 07 4565 4100



Elders

Introduction

Ian and I extend a warm welcome to you for our 2020 Seifert Belmont Red sale.

In the words of the Queen, 2019 was our "Annus Horribilis" with only 7" to 9" of rain across our six properties from Crow's Nest, to Jandowae and Chinchilla. Our country types range from marginal, ticky, decomposed granite, iron- bark forest country, to box, brigalow, belah and buffel with some leucaena, to pockets of bottle tree scrub. Every place was equally desertified in the drought. Despite this, our moderate framed Belmont Red females soldiered on, but by January of 2020 with sparse grass left, we reached our 'drought deadline'. For the first time ever, we early weaned. Remarkably most females fell pregnant prior to the weaning event. For example, we achieved 96% PTIC on our wet, first calf, yearling mated heifers. Foetal aging identified that 63% fell pregnant in the first two cycles – before their calves were weaned. These statistics were consistent across our Belmont Red herd and added new meaning to 'drought tolerant' and 'heat resistant' adapted cattle.

Environmentally adapted fertile cows produce hardy profit-generating bulls. Our 'survival of the fittest' breeding philosophy means we produce genuinely unpampered and low-input-cost, commercially relevant genetics for Northern Australian conditions. Our breeders - young and old - must 'do' with only loose urea lick through winter, no supplement in summer, and not substituted or spike fed to get pregnant. They are never treated for tick or fly (except to clear to clean country) to maintain the highest natural resistance.

The beauty of inherent traits like this, is that they are a 'Free lunch'. The economy of not having to repeatedly muster to chemically treat for tick or fly is a massive saving. Cattle that continue to feed and breed unbothered in 48c heat, are making you money. Moderate framed breeders who breed early, and every year, mean your dollars multiply faster. Bulls that can be used at one year old, and at 1%-2%, give more bang for your buck and have

a longer working life. Short sheaths mean break downs are rare. Naturally calm, polite cattle that don't need 'special' handling, are safer and easier to work in the paddock or the yards, gain weight more readily, and produce fewer dark cutters. MSA carcasses deliver higher premiums. Polled cattle save time, weight-loss and life-loss, from dehorning. Each of these traits is economically valuable, and fortunately you do not have to 'pay extra' for them when they are already 'fixed' in the genes. As such, they don't rely on costly external man-made inputs like management, feeding and chemicals to artificially 'prop up the animal'. In our bulls all these traits are in one convenient, heritable, genetic package and will be passed onto their cross-bred or purebred progeny.

The 2020 Sale bulls and PTIC heifers are out of this tough cow herd. The 62 bulls listed here are an outstanding group of profitable sires with over 82% of them in the top 40th percentile band for profitability on the export \$index, and over 60% of them in the top 20th percentile band for profitability on the domestic \$ index.

This is where phenotype meets genotype, with the lead of the bulls over 800kg by sale day and representing the high growth genetics sought by many breeders. At the same time there is great selection

of low and average birth weight bulls ideal for heifer joining. In a class of their own are the curve benders that are both low birth weight combined with high growth. There is muscling, marbling and supreme fertility traits and every bull is polled, including 11 homozygous (PP) polls. In short, here is a wide choice of bulls with a comprehensive range of traits to drive profitability in any herd.

Finally, this sage and timely advice:

- When you buy a bull in 2020, his first calves will be born in 2021, and his first daughters will calve in 2023 or 2024.
- His last calves will be born in 2026 or later.
- In 2036, the 10-year-old females and older, in your herd, could still be out of this year's bull purchase. Most of your middle-aged cows will be his granddaughters.
- The moral of the story is - There are no short-term decisions in this business.
- Find and buy the best bulls you can afford, from a professional source, that is committed to profitability, because his genetics will be in your herd until the early 2040's. (credit to 'Allied Genetic Resources' USA).

Jeanne and Ian





AuctionsPlus®

Australia's Livestock Marketplace

Can't make the sale?

Purchase online in eight simple steps!

Log on to AuctionsPlus and bid on your phone, tablet or computer.

- 1 REGISTER ONLINE**
Free once off registration for all auctions.
- 2 COMPLETE BUYER INDUCTION**
The buyer induction will help you understand the roles and responsibilities of everyone on the AuctionsPlus system.
- 3 VIEW CATALOGUE**
View photos, videos, pedigrees and more.
- 4 ENTER AUCTION**
Log into the auction anytime, anywhere and bid on your mobile, tablet or computer.
- 5 AUTO BID**
Can't stay for the whole sale? Set your maximum bid on the lot that you want to purchase and let the computer bid for you.
- 6 CONTACT SELLING AGENT**
If successful, contact selling agent to arrange payment and delivery. The agent contact details will be available in the catalogue header.
- 7 PAYMENT**
Via the selling agent's terms and conditions.
- 8 DELIVERY**
Arrange transport of livestock at your expense.

Contact AuctionsPlus on (02) 9262 4222
or email studsales@auctionsplus.com.au
or www.auctionsplus.com.au

Check us out on:



Sale Details

Ian and I welcome you to our on-property Seifert Belmont Red Sale at our home 'Wonga' 490 Jolimont Rd Jandowae Q 4410. Sale day is Thursday the 30th July 2020. The Helmsman Auction will commence at 11.30 am and close at approximately 12.30 pm. It will be held concurrently on-line on AuctionsPlus. Bidding online will be available from Monday 27th July.

If you are unable to attend the sale and intend to bid online, please ensure you are registered to bid with AuctionsPlus prior to the sale. AuctionsPlus can be contacted on 02-92624222 and studsales@auctionsplus.com.au

If you wish to bid by phone, please arrange this prior to the sale by contacting Elders agent Robert Murray 0419644813 or your own agent. There is mobile phone coverage on site.

DIRECTIONS

There is a map on Page 50 of this catalogue (MAP)

PRE-SALE INSPECTIONS

Bulls and heifers are available for inspection anytime – just give us a call!

SAFETY RECOMMENDATIONS

COVID-19 recommended best practice will be adhered to at the sale, with hand washing facilities, sanitiser, and plenty of room to socially distance in and outside of our big open shed.

All bulls will be penned in groups according to lot numbers. We are confident all bulls offered for sale are quiet and of sound temperament. However, sale day brings different conditions and bulls are subjected to unusual levels of pressure. Even the quietest bull can be unpredictable. Visitors entering pens do so at their own risk and children are forbidden in pens. Our station hands Sam and Neil, and the Elders agents, will be on hand during the day to walk bulls up to the rails or around the pens as you wish.

HEALTH

All bulls have been vaccinated with 5in1, and for Vibriosis, Bovine Ephemeral fever (3-day sickness), tick fever and are tested PI negative. 'Wonga' is tick free and all bulls are clear to go to tick free areas. Seifert Belmont Reds are JBAS 7 and WA eligible.

FERTILITY

All the bulls have passed a semen test, including semen morphology and motility by John Chapman of SEQ genetics. Full details will be available in the supplementary sheet on the day.

RAW DATA

A supplementary sheet with raw data including recent weight, scrotal measurement, semen morphology and motility, and ultrasound live carcase scanning, will be available on our website www.seifertbelmontreds.com a week before the sale, and on sale day.

IDENTIFICATION

All bulls have a yellow management tag with their breed register identification number (ID), and an NLIS tag, in their right ear. All bulls are branded with their year number and ID. Both the animal's lot number and ID's are noted in the sale catalogue and on the pens. The pens will be in lot number order with about 9 bulls per pen.

PIC

Our PIC number is QDWB0155

INSURANCE

Ownership passes at the fall of the hammer. Insurance can be arranged on the day through Elders or your agent.

AGENT REBATE

A rebate of 4% is offered to outside agents introducing approved buyers in writing no later than 24 hours prior to the sale, and who accompany their buyer to the sale, and who settle on their behalf within 7 days of the sale. A 2% is offered to all licensed agents introducing buyers in writing at least 24 hours prior to the sale.

REGISTRATION TRANSFERS

Upon request by the purchaser, Seifert Belmont Reds is happy to transfer the Belmont Australia breed registration of bulls, free of charge.

REFRESHMENTS/LUNCH

Due to COVID-19 limitations, unfortunately we will not be offering our usual buffet style morning tea and BBQ this year. However, complimentary pre-packaged snacks, sandwiches, and a beer or two at the end of the sale, will be on offer.

TRANSPORT

We are offering free cartage to Rockhampton, Roma, and Dalby. For other inquiries about organising transport, please contact the Elders agent, or Ian on 0439632113 for advice, prior to the sale.

ACCOMMODATION

The town of Jandowae is a 20 minute drive from 'Wonga' and accommodation is available at AAOK Jandowae accommodation park 104 High St, Jandowae ph: 46685071; The Exchange hotel 41 High St, Jandowae ph 4668 5139; Jandowae hotel motel 32 High St, Jandowae 4668 5206.

There are many motels in Kingaroy, Dalby or Chinchilla which are all about 1 hours' drive from 'Wonga'.

SEMEN INTEREST

Seifert Belmont Reds will retain a half interest in any semen sold from bulls in this sale. This is a revenue sharing opportunity for buyers. If required, we reserve the right to access bulls at a mutually convenient time and place and at our cost.

GUARANTEE

We warrant that every bull is fertile and capable of natural service at the time of the sale and is guaranteed fertile for twelve months from sale day. If a bull should become infertile or breakdown to be unable to serve cows naturally within 12 months for reasons other than injury or misadventure, Seifert Belmont Reds will provide you with either a satisfactory replacement or a credit equal to the purchase price of the bull less salvage value. Seifert Belmont Reds will require you to provide a veterinary report.

DISCLAIMER

Whilst all due care and attention has been paid to accuracy in the compilation of this catalogue, neither the Vendors nor the Selling Agents or representative(s) thereof assume any responsibility whatsoever for the correctness, use or interpretation of the information on animals included in this sale catalogue.

BREEDPLAN EBVs - PERCENTILE BANDS FOR 2018 BORN CALVES

PERCENTILE BAND	GL	BW	200 WT	400 WT	600 WT	MC WT	MILK	SS	DC	C WT	EMA	RIB	RUMP	RBY	IMF	DI \$	EI \$
Top Value	3.9	-1.7	+39	+49	+75	+112	+18	+5.2	-11.0	+54	+6.5	+1.5	+3.8	+1.8	+1.0	+38	+52
Top 1%	-2.8	-1.0	+33	+42	+64	+91	+15	+3.6	-9.0	+43	+5.0	+1.1	+2.7	+1.3	+0.8	+36	+43
Top 5%	-2.1	+0.1	+29	+36	+54	+71	+14	+3.0	-7.3	+36	+4.2	+0.7	+2.1	+1.1	+0.5	+32	+38
Top 10%	-2.0	+0.6	+27	+33	+49	+63	+12	+2.6	-6.1	+34	+3.8	+0.5	+1.7	+1.0	+0.4	+29	+36
Top 15%	-1.9	+1.0	+24	+31	+46	+59	+11	+2.4	-5.5	+32	+3.6	+0.4	+1.5	+0.9	+0.3	+27	+33
Top 20%	-1.7	+1.3	+23	+29	+43	+54	+11	+2.2	-4.6	+30	+3.4	+0.3	+1.3	+0.8	+0.3	+26	+31
Top 25%	-1.6	+1.5	+22	+28	+40	+51	+10	+2.1	-4.0	+29	+3.2	+0.2	+1.1	+0.8	+0.3	+25	+29
Top 30%	-1.4	+1.6	+21	+27	+38	+49	+10	+1.9	-3.4	+28	+2.9	+0.1	+0.8	+0.7	+0.3	+24	+28
Top 35%	-1.4	+1.8	+20	+25	+37	+46	+9	+1.8	-3.0	+27	+2.7	+0.0	+0.7	+0.7	+0.2	+23	+27
Top 40%	-1.3	+1.9	+19	+24	+35	+43	+9	+1.7	-2.4	+26	+2.6	-0.1	+0.5	+0.6	+0.2	+22	+25
Top 45%	-1.2	+2.1	+18	+23	+33	+41	+8	+1.6	-1.8	+25	+2.4	-0.1	+0.4	+0.6	+0.2	+21	+24
Top 50%	-1.1	+2.3	+18	+22	+31	+39	+8	+1.5	-1.4	+23	+2.3	-0.2	+0.3	+0.6	+0.2	+20	+23
Top 55%	-1.0	+2.5	+17	+21	+30	+37	+8	+1.4	-1.0	+22	+2.1	-0.2	+0.2	+0.5	+0.1	+19	+22
Top 60%	-0.9	+2.7	+16	+20	+28	+35	+7	+1.3	-0.7	+21	+1.9	-0.3	+0.1	+0.5	+0.1	+18	+21
Top 65%	-0.8	+2.9	+16	+19	+27	+33	+6	+1.2	-0.4	+20	+1.8	-0.3	-0.1	+0.4	+0.1	+17	+20
Top 70%	-0.7	+3.1	+15	+18	+25	+30	+6	+1.1	+0.1	+19	+1.6	-0.4	-0.1	+0.4	+0.1	+17	+19
Top 75%	-0.6	+3.2	+14	+17	+24	+28	+5	+1.0	+0.4	+18	+1.4	-0.5	-0.2	+0.4	+0.1	+16	+19
Top 80%	-0.4	+3.5	+13	+15	+22	+25	+5	+0.9	+1.0	+17	+1.3	-0.6	-0.4	+0.3	+0.1	+15	+17
Top 85%	-0.2	+3.8	+11	+14	+20	+22	+4	+0.7	+1.6	+15	+1.2	-0.7	-0.5	+0.3	+0.0	+14	+16
Top 90%	-0.1	+4.1	+10	+12	+18	+17	+3	+0.5	+2.3	+13	+1.0	-0.8	-0.7	+0.2	+0.0	+12	+14
Top 95%	+0.2	+4.7	+8	+9	+14	+10	+2	+0.1	+3.6	+10	+0.7	-1.0	-1.1	+0.1	-0.1	+10	+11
Top 99%	+0.5	+5.8	+5	+4	+8	-1	-4	-1.2	+6.4	+3	-0.2	-1.4	-2.0	-0.1	-0.2	+7	+6
Low Value	+0.9	+7.0	+0	-3	+0	-17	-7	-1.9	+8.6	-1	-0.4	-2.4	-3.4	-0.1	-0.3	+1	+0

GL Gestation Length (days) BW Birth Wt (kg) 200 WT 200 Day Wt (kg) 400 WT 400 Day Wt (kg) 600 WT 600 Day Wt (kg) MC WT Mat Cow Wt (kg) MILK Milk (kg) SS Scrotal Size (cm) DC Days to Calving (days)
C WT Carcase Wt (kg) EMA Eye Muscle Area (sq cm) RIB Rib Fat (mm) RUMP Rump Fat (mm) RBY Retail Beef Yield (%) IMF IMF (%) DI \$ Domestic Index (\$) EI \$ Export Index

IF YOU ARE UNSURE ON ANY OF THE EBV TITLES LISTED HERE AND THROUGHOUT OUR CATALOGUE, PLEASE TURN TO PAGE 48 FOR AN EBV EXPLANATION



BBSE BULL BREEDING SOUNDNESS EVALUATION

Under the BBSE Bull Breeding Soundness Evaluation run by the ACV the following is stated.

Motility For Live Rate: Fail under 30%
Pass is given for 30 to 59%
Tick is 60% or higher

Morphology: Fail under 50%
P level pass is 50 to 69%
Tick for 70% and over

The standards for Crush-side Semen and Sperm Morphology

Crush-side Semen evaluation and laboratory evaluation of Sperm Morphology are strong indicators of whether a bull is fertile or sub-fertile. If a physically-normal bull is rated as having passed these evaluations, he is expected to be fertile, ie, if mated, he can impregnate (pregnant at day 42 of gestation) by natural service at least 60% and 90% of 50 normal, cycling, disease-free females within 3 and 9 weeks, respectively.

The ACV has 2 pass levels for semen evaluation.

The highest level -Tick - indicates that the bull is fertile with respect to the category assessed and has 60% or higher progressively forward motile sperm. Further, it is very likely that the semen of this bull will be fertile after freezing. The lower level - P - was introduced to indicate that a bull may be fertile under natural mating, but it is likely his semen is not suitable for freezing.

The P level is given to bulls with between 30 and 59% motile sperm in Crush-side Semen evaluation. Bulls have to pass thresholds for eight Sperm Morphology categories and 70% or higher normal sperm, as assessed by an accredited sperm morphologist, to gain a tick for this assessment category.

For a P-level pass, this includes having between 50% and 69% normal sperm.

It is possible that physically-normal, P-level bulls, and especially those close to the lower threshold, may be shown to be less than fully fertile when mated. Such bulls are acceptable under multiple-sire mating, but veterinary advice should be considered before single-sire mating of such bulls.

SEIFERT BELMONT REDS SALE BULL TRAIT EBVs IN THE 10TH, 20TH AND 40TH PERCENTILE BANDS.

LOT NO.	SOCIETY ID	GL	BW	200G	400G	600G	MCW	MILK	SS	DC	CWT	EMA	RIB	RUMP	RBY	IMF	DI\$	EI%
1	SEI190001	-3	0.9	21	33	51	67	9	3.1	-4.1	30	2.4	0	0.8	0.4	0.2	34	42
2	SEI190101	-1.6	3.1	27	34	53	61	8	0.7	-1.8	32	2.8	0	0.2	0.9	0	28	36
3	SEI190541	-1.3	4.4	28	47	68	98	7	3.1	1.7	43	1.7	-0.6	-0.2	0.6	0.2	28	33
4	SEI190149	-1	5.8	34	51	70	101	9	1.9	4.7	52	3.9	-0.1	0.3	1	0	26	29
5	SEI190591	-0.7	6.3	36	54	82	114	9	1.8	3.1	53	2.6	-0.6	-0.5	0.6	0	25	33
6	SEI190571	-0.9	4.5	26	49	75	113	6	2.5	3.1	51	3.2	-0.9	-0.8	0.8	0.2	29	36
7	SEI190527	-1.3	5.3	30	48	69	103	8	2.7	-0.4	47	2	-0.6	-0.2	0.6	0.1	29	35
8	SEI190661	-1.2	4.6	36	54	93	121	15	1.8	-4.3	51	2.9	-0.1	0.8	0.4	0	41	57
9	SEI190177		4.2	23	31	45	60	7	0.8	1.5	37	4.7	0.6	1.1	0.9	0.2	21	25
10	SEI190697	-1	5.2	30	49	73	104	7	3.6	1.4	48	3.5	-0.7	-0.5	1	0.1	30	38
11	SEI190179	-1.3	4.9	31	42	67	85	9	3.1	-3	46	2.7	-1	-0.9	0.9	0	30	41
12	SEI190125	0.1	3.5	16	27	41	64	8	1.2	-1.3	32	3.3	-0.9	-1.1	0.6	-0.1	21	26
13	SEI190471	-1.5	5.2	36	60	94	136	15	2.4	-0.7	54	3.2	-0.5	-0.2	1	0.1	42	54
14	SEI190019	-1.3	2.4	26	38	62	69	9	1.1	-1.2	35	2.2	-0.8	-0.7	0.6	0	29	39
15	SEI190153	-1.2	3.8	27	45	64	90	10	1.1	-0.9	42	4.5	0.6	1.2	0.8	-0.2	34	41
16	SEI190071	-1.1	2.7	25	30	54	61	4	1.2	0.1	29	2.8	-0.1	0.1	0.7	0	23	33
17	SEI190011	-4.2	0.7	16	28	42	53	10	1.2	-2.5	18	-0.9	-0.2	1.1	-0.1	0.2	25	30
18	SEI190155	-1.5	1.8	22	32	49	65	10	2.8	-0.4	28	1.3	-0.8	-0.9	0.7	0	27	32
19	SEI190233	-1.5	3	20	33	50	73	6	2.3	-0.2	32	2.5	-0.4	-0.2	0.7	0.1	26	31
20	SEI190243	-0.1	4.9	21	39	49	68	9	2.8	-0.6	35	1.6	-0.3	0.5	0.5	0.3	23	24
21	SEI190811	-1.2	5.2	30	52	66	105	10	3.5	0.2	53	5.5	0.1	0.1	1.4	-0.1	37	40
22	SEI190005	-2	0.7	18	28	38	42	11	1.7	-2.4	20	1.7	0.3	1.2	0.3	0.2	27	31
23	SEI190039	-0.1	5.2	27	36	54	73	10	4.5	-3.2	35	3.2	-0.1	0.7	0.9	0.4	27	35
24	SEI190569	-1.2	4.9	26	47	56	96	4	2.6	-0.5	43	3.1	0	0.6	0.8	0.3	31	32
25	SEI190403	-1.4	4.7	32	41	62	78	12	2.4	-4.2	42	3.8	0.4	1.1	0.9	0	33	43
26	SEI190549	-0.9	3.1	19	36	54	82	5	1.6	-0.5	35	2.2	-0.4	0.1	0.5	0.2	27	33
27	SEI190007	-2	1	17	29	44	58	12	2.1	-3.9	18	-0.1	0.5	2.1	-0.1	0.4	29	34
28	SEI190559		3	22	38	50	75	7	2.7	2.8	39	4	-0.3	-0.3	0.9	0.2	26	28
29	SEI190805	-1.2	4.9	32	52	72	101	11	3.1	-0.1	50	5	0.3	0.9	1.1	0	37	43
30	SEI190575	-1.3	2	16	23	33	47	14	1.2	-7.5	15	0.2	0.2	1.6	-0.1	0.2	27	32
31	SEI190027	-1.7	2.2	22	25	36	41	8	1.7	-0.7	22	1.8	0	0.8	0.5	0.1	21	24
32	SEI190213	-1.3	3.8	19	30	35	63	3	1.3	1.6	37	3.9	-0.7	-0.9	1.1	0	21	20
33	SEI190201	-1.9	3.3	22	35	44	67	9	1.9	-3.1	34	4	-0.2	0.3	0.9	0	31	34
34	SEI190259		3.6	20	29	39	56	5	2.7	0.3	38	4.7	-0.2	-0.1	1.2	0.3	24	27
35	SEI190265	-1.5	0.7	12	23	26	40	8	1.3	-3.7	15	1.2	0.2	0.9	0.3	0.2	26	27
36	SEI190089	0.4	6.2	19	32	29	54	7	1.9	-1.7	30	2	-0.3	0.1	0.9	0.3	18	14
37	SEI190189	-1.6	4	24	44	60	94	10	1.9	2.2	41	3	-0.5	-0.2	0.9	0.1	29	32
38	SEI190373		5.2	30	36	61	75	5		0.4	37	1.3	0.1	1.2	0.4	0.1	19	28
39	SEI190221	-0.8	3.5	26	29	44	47	7	1	3.8	36	4.3	-0.6	-1.1	1.2	-0.2	17	21
40	SEI190493	-2	2.8	24	31	48	59	9	1.6	1	33	3.9	0.8	1.6	0.6	0.2	24	29
41	SEI190651	-0.9	4.9	27	44	68	98	9	3.2	-4.3	45	2.4	-0.6	-0.1	0.6	0.3	33	43
42	SEI190157	-1.5	3	20	27	37	56	6	2.3	-3.4	29	2.2	0	1.1	0.4	0.2	24	28
43	SEI190799		2.8	24	31	53	65	9	1.4	-2.8	36	4.3	0.4	1.3	0.6	0	29	38
44	SEI190017	-2.6	-0.8	14	20	27	38	9	3.1	-7	20	2.8	0.1	0.8	0.5	0.4	34	38
45	SEI190015	-2.5	1.1	18	22	27	33	9	1.4	-0.3	19	2	-0.2	0.1	0.6	0.2	21	21
46	SEI190023	-1.2	1	16	26	33	44	10	2.6	-3.2	23	2.5	0.3	1.3	0.4	0.5	28	30
47	SEI190053	-0.9	2.8	24	27	48	53	4	1.2	0.1	27	2.4	-0.3	-0.2	0.7	0.1	20	29
48	SEI190087	-1.3	3.1	20	24	38	56	6	2.5	-4.7	27	1.6	0.2	1.7	0.2	0.4	23	30
49	SEI190523	-2.2	0.9	21	29	40	54	11	2.9	-4.5	26	2.3	0.2	1.1	0.5	0.3	33	37
50	SEI190545	-0.8	3.1	17	31	41	65	7	3.2	-4.2	24	1.3	0	1.1	0.3	0.4	27	31
51	SEI190271	0.1	3.2	12	20	22	41	5	0.6	-0.4	23	2.7	-0.3	-0.4	0.8	0	17	16
52	SEI190329	-0.7	1.4	13	20	20	33	7	2.2	-6.3	17	1.6	-0.4	0	0.5	0.3	26	27
53	SEI190239	-0.3	3.9	19	24	35	52	6	1.9	-2.3	32	3.1	-0.9	-1.1	1.1	0.2	22	26
54	SEI190033	-0.8	2.3	18	25	38	49	7	2.5	-4.3	26	2.2	0.1	1.2	0.4	0.4	26	32
55	SEI190085	-1.4	3	28	31	54	61	7	1.9	-1	36	4	-0.5	-1	1.1	0	27	36
56	SEI190479	-1.6	2.2	25	29	44	54	8	3	0.8	31	2.8	0.1	0.9	0.7	0.2	24	28
57	SEI190307	-2.2	-1.8	11	19	28	30	7	1.3	-4.2	17	2.3	0.2	0.8	0.2	0.3	28	33
58	SEI190501	-3.3	-1.3	23	27	52	57	9	1	-4.9	26	1.7	-0.9	-1.1	0.5	-0.2	35	47
59	SEI190169		3.2	14	17	19	27	9	1.9	-3.4	19	2.5	0.9	2.3	0.4	0.4	17	18
60	SEI190031	-0.2	3.9	18	15	26	20	9	-0.5	-2.7	22	2.6	0.1	0.5	0.5	0.1	12	17
61	SEI190483	-1.7	2.6	18	25	31	42	8	3.3	-2.6	23	1.5	-0.5	0.1	0.6	0.2	23	24
62	SEI190103	-0.6	1.3	9	14	11	25	6	0.8	-4.6	16	1.4	-0.4	-0.1	0.5	0.4	20	19

TOP 10%
TOP 20%
TOP 40%

SUPPLEMENTARY LOT LATE ADDITION TO CATALOGUE

LOT 1 can be found on the next page.

**Late
Supplementary
LOT**

SEIFERT BELMONT REDS

ID: SEI190299 **DOB:** 08/10/2018 **AGE:** 21.8 Mths **REGO STATUS:** REGISTERED
GRADE: PURE BR **HORN:** POLLED **DNA TEST:** PH

SEI120051 SEIFERT 120051
SEI140171 SEIFERT 140171
SEI080214 SEIFERT 08 0214
SIRE: SEI160023 SEIFERT BELMONT 160023
BEL070211 BELMONT 070211
SEI130348 SEIFERT 130348
MON060200 MONTPELLIER 06-2
ANIMAL: SEI190299 SEIFERT BELMONT 190299
TRE050191 TREMERE 050191
TRE080023 TREMERE 080023
TRE981030 TREMERE 98-1030
DAM: BEL120213 BELMONT 120213
TRE030179 TREMERE 030179
BEL080074 BELMONT 080074
BEL020242 BELMONT 02-0242



A very solid, light red, well balanced bull. He is a late addition to the sale team so is a bit behind in condition compared to his mates. However, despite this you can see by his raw data stats that he is very much holding his own. Combining carcass and fertility traits, his EBV's put him above the top 5% percentile for growth and carcass weight, the top 10% for scrotal size and above average for days to calving which places him in the top 5% on the export index. He is out of a bought CSIRO cow who has had 6/6 calves in a row and is PTIC with her 7th.

July 2020 Belmont Red GROUP BREEDPLAN																	
	GL	BW	200	400	600	MC	Milk	SS	DC	CW	EMA	Rib	Rump	RBY	IMF	Domestic	Export
EBV	-0.8	4.8	30	39	67	86	6	2.6	-2.2	43	1.5	-1.5	-1.8	0.9	0.1	\$27	\$39
Acc	35%	64%	73%	73%	76%	70%	45%	73%	41%	60%	56%	58%	56%	45%	51%		
Breed Avg. EBVs for 2018 Born Calves																	
EBV	-1.1	+2.4	+18	+22	+32	+40	+8	+1.5	-1.7	+24	+2.3	-0.2	+0.4	+0.6	+0.2	+\$20	+\$24

Traits Observed: 200WT, 400WT(x2), 600WT, SS, FAT, EMA, IMF, FLT

Purchaser

\$

LOT
1

SEIFERT BELMONT REDS

ID: SEI190001 **DOB:** 20/08/2018 **AGE:** 23.4 Mths **REGO STATUS:** REGISTERED
GRADE: PURE BR **HORN:** POLLED **DNA TEST:** PH

BEL070211 BELMONT 070211
 SEI130539 SEIFERT 130539
 JIS030228 SEIFERT 3-228
SIRE: SEI150301 SEIFERT BELMONT 150301
 MON990041 MONTPELLIER 99-41
 MON030002 MONTPELLIER 03-2
 MON980284 MONTPELLIER 98-284
ANIMAL: SEI190001 SEIFERT BELMONT 190001
 SEI090377 SEIFERT TEDSTAR
 SEI130061 SEIFERT 130061
 SEI080322 SEIFERT 08 0322
DAM: SEI160258 SEIFERT BELMONT 160258
 MON030017 MONTPELLIER 03-17
 MON060212 MONTPELLIER 06-22
 SEI0000G1 SEIFERT GENERIC G1



Beautifully rounded like his figures, 190001 is a highly profitable bull. He is a curve bender with growth in the top 10% for 600D in combination with favourable low BW (birth weight). He is also in the top 5% for SS (scrotal size), top 20% for carcass weight and 25% for DTC (days to calving) putting him in the top 5% on the domestic \$index and nearly the top 1% for the export \$index. His dam is a young stayer being on her 3rd in a row. Scrotal size of 39 cm in April.

June 2020 Belmont Red GROUP BREEDPLAN																	
	GL	BW	200	400	600	MC	Milk	SS	DC	CW	EMA	Rib	Rump	RBY	IMF	Domestic	Export
EBV	-3	0.9	21	33	51	67	9	3.1	-4.1	30	2.4	0	0.8	0.4	0.2	\$34	\$42
Acc	59%	76%	74%	74%	76%	70%	49%	73%	41%	62%	57%	61%	59%	47%	54%		
Breed Avg. EBVs for 2018 Born Calves																	
EBV	-1.1	+2.4	+18	+22	+32	+40	+8	+1.5	-1.7	+24	+2.3	-0.2	+0.4	+0.6	+0.2	+\$20	+\$24

Traits Observed: GL, BWT, 200WT, 400WT(x2), 600WT, SS, FAT, EMA, IMF, FLT

Purchaser \$

LOT
2

SEIFERT BELMONT REDS

ID: SEI190101 **DOB:** 26/09/2018 **AGE:** 22.1 Mths **REGO STATUS:** REGISTERED
GRADE: PURE BR **HORN:** POLLED **DNA TEST:** PH

SAAG91130 AG 91-130 (BONS.) (IMP Sth AF)
 ISAGRC9714 GRC9714 (P) (IMP STH AF) (ET)
 SAIVYN142 IVY N 142 (BONS.) (IMP Sth AF)
SIRE: VAL01B808 VALINOR B808 (IVF)
 VAL91V655 VALINOR 655
 VAL96V182 VALINOR 96-V182 (B)
 BAN870N55 BANGALLA 87-N55
ANIMAL: SEI190101 SEIFERT BELMONT 190101
 SEI06MS01 06 OAK
 SEI090187 SEIFERT 09 0187SEI
 MON050012 MONTPELLIER 05-12
DAM: SEI120220 SEIFERT 120220
 COR010057 CORYMBIA 0057
 COR030089 CORYMBIA 0089
 COR010097 CORYMBIA 0097



A broad and appealing IVF son by outside sire VAL01B808, he is a high yielding bull in the top 15% for RBY (retail beef yield). This is combined with negative DTC (days to calving) in the top 45% which puts him in the top 10% in the export \$index. His dam was a proven breeder who had 6 calves in a row. Scrotal Size 36cm in April.

June 2020 Belmont Red GROUP BREEDPLAN																	
	GL	BW	200	400	600	MC	Milk	SS	DC	CW	EMA	Rib	Rump	RBY	IMF	Domestic	Export
EBV	-1.6	3.1	27	34	53	61	8	0.7	-1.8	32	2.8	0	0.2	0.9	0	\$28	\$36
Acc	47%	75%	70%	71%	68%	66%	50%	71%	41%	60%	55%	58%	57%	45%	51%		
Breed Avg. EBVs for 2018 Born Calves																	
EBV	-1.1	+2.4	+18	+22	+32	+40	+8	+1.5	-1.7	+24	+2.3	-0.2	+0.4	+0.6	+0.2	+\$20	+\$24

Traits Observed: GL, BWT, 200WT, 400WT(x2), 600WT, SS, FAT, EMA, IMF, FLT

Purchaser \$

LOT
3

SEIFERT BELMONT REDS

ID: SEI190541 **DOB:** 10/08/2018 **AGE:** 23.7 Mths **REGO STATUS:** REGISTERED
GRADE: PURE BR **HORN:** POLLED **DNA TEST:** PH

BEL070211 BELMONT 070211
 SEI130539 SEIFERT 130539
 JIS030228 SEIFERT 3-228
SIRE: SEI150143 SEIFERT BELMONT 150143
 MON980035 MONTPELLIER 98-035
 MON020060 MONTPELLIER 02-60
 MON990002 MONTPELLIER 99-2
ANIMAL: SEI190541 SEIFERT BELMONT 190541
 BEL070211 BELMONT 070211
 SEI130071 SEIFERT 130071
 MON070332 MONTPELLIER 0332
DAM: SEI150200 SEIFERT 150003
 TRE070059 TREMERE 07-59
 SEI120184 SEIFERT 120184
 JIS030168 SEIFERT 3-168



This heavy, soft bull is Ian's favourite. He is as quiet as a lamb (the bull, not Ian) and not surprisingly is in the top 1% for both 600D growth and carcass weight. Combined with an impressive Scrotal size (42cm in April) and SS (scrotal size) EBV in the top 5%, this puts him in the top 15% on the export \$index.

June 2020 Belmont Red GROUP BREEDPLAN																	
	GL	BW	200	400	600	MC	Milk	SS	DC	CW	EMA	Rib	Rump	RBY	IMF	Domestic	Export
EBV	-1.3	4.4	28	47	68	98	7	3.1	1.7	43	1.7	-0.6	-0.2	0.6	0.2	\$28	\$33
Acc	27%	58%	72%	72%	76%	68%	46%	73%	41%	59%	57%	61%	59%	46%	54%		
Breed Avg. EBVs for 2018 Born Calves																	
EBV	-1.1	+2.4	+18	+22	+32	+40	+8	+1.5	-1.7	+24	+2.3	-0.2	+0.4	+0.6	+0.2	+\$20	+\$24

Traits Observed: GL, BWT, 200WT, 400WT(x2), 600WT, SS, FAT, EMA, IMF, FLT

Purchaser \$

LOT
4

SEIFERT BELMONT REDS

ID: SEI190149 **DOB:** 05/09/2018 **AGE:** 22.8 Mths **REGO STATUS:** REGISTERED
GRADE: PURE BR **HORN:** POLLED **DNA TEST:** PP

SEI13MS01 SEI110155, BEL110089
 SEI130097 SEIFERT BELMONT 130097
 SEI090044 SEIFERT 09-044
SIRE: SEI170405 SEIFERT BELMONT 170405
 COR04MS01 MULTIPLE SIRES 2004
 COR040024 CORYMBIA 04-24
 NAR000168 NARAYEN 00/168
ANIMAL: SEI190149 SEIFERT BELMONT 190149
 F3K050508 CO JUNE 05-508
 TRE090231 TREMERE 090231
 TRE020314 TREMERE 020314
DAM: SEI140518 SEIFERT 140518 (AI)
 SEI11MS01 SEI060017 & SEI080251
 SEI110186 SEIFERT 110186
 JIS030209 SEIFERT 3-209



One of the heaviest bulls in the draft and what a carcass bull - and a homozygous poll as well. This super docile, soft skinned bull is above the top 1% for carcass weight, and in the top 10% for RBY (retail beef yield) and EMA (eye muscle area). He is out of a proven breeder who is on her 5th calf in a row. Scrotal Size 41cm in April.

June 2020 Belmont Red GROUP BREEDPLAN																	
	GL	BW	200	400	600	MC	Milk	SS	DC	CW	EMA	Rib	Rump	RBY	IMF	Domestic	Export
EBV	-1	5.8	34	51	70	101	9	1.9	4.7	52	3.9	-0.1	0.3	1	0	\$26	\$29
Acc	27%	57%	68%	70%	66%	64%	43%	70%	35%	56%	54%	56%	56%	43%	50%		
Breed Avg. EBVs for 2018 Born Calves																	
EBV	-1.1	+2.4	+18	+22	+32	+40	+8	+1.5	-1.7	+24	+2.3	-0.2	+0.4	+0.6	+0.2	+\$20	+\$24

Traits Observed: GL, BWT, 200WT, 400WT(x2), 600WT, SS, FAT, EMA, IMF, FLT

Purchaser \$

LOT
5

SEIFERT BELMONT REDS

ID: SEI190591 **DOB:** 30/09/2018 **AGE:** 22.0 Mths **REGO STATUS:** REGISTERED
GRADE: PURE BR **HORN:** POLLED **DNA TEST:** PP

BEL070211 BELMONT 070211
 SEI130539 SEIFERT 130539
 JIS030228 SEIFERT 3-228
SIRE: SEI150143 SEIFERT BELMONT 150143
 MON980035 MONTPELLIER 98-035
 MON020060 MONTPELLIER 02-60
 MON990002 MONTPELLIER 99-2
ANIMAL: SEI190591 SEIFERT BELMONT 190591
 SEI100005 SEIFERT 0005
 SEI120021 SEIFERT GERONIMO
 SEI090180 SEIFERT 09 0180SEI
DAM: SEI150018 SEIFERT 150018
 TRE070065 TREMERE 07-65
 BEL120138 BELMONT 120138
 BEL080229 BELMONT 080229



Another of Ian's favorites. A very quiet and heavy Homozygous Poll, in keeping with his growth and carcass weight EBVs, which are both in the very top value (>1%). This positions him in the top 15% on the export \$index. His dam is a stayer on her 4th calf in a row. Scrotal Size 38cm in April.

June 2020 Belmont Red GROUP BREEDPLAN

	GL	BW	200	400	600	MC	Milk	SS	DC	CW	EMA	Rib	Rump	RBY	IMF	Domestic	Export
EBV	-0.7	6.3	36	54	82	114	9	1.8	3.1	53	2.6	-0.6	-0.5	0.6	0	\$25	\$33
Acc	30%	58%	71%	72%	75%	68%	45%	72%	41%	59%	56%	61%	59%	46%	53%		

Breed Avg. EBVs for 2018 Born Calves

EBV	-1.1	+2.4	+18	+22	+32	+40	+8	+1.5	-1.7	+24	+2.3	-0.2	+0.4	+0.6	+0.2	+\$20	+\$24
-----	------	------	-----	-----	-----	-----	----	------	------	-----	------	------	------	------	------	-------	-------

Traits Observed: GL, BWT, 200WT, 400WT(x2), 600WT, SS, FAT, EMA, IMF, FLT

Purchaser

\$

LOT
6

SEIFERT BELMONT REDS

ID: SEI190571 **DOB:** 12/10/2018 **AGE:** 21.6 Mths **REGO STATUS:** REGISTERED
GRADE: PURE BR **HORN:** POLLED **DNA TEST:** PH

BEL070211 BELMONT 070211
 SEI130539 SEIFERT 130539
 JIS030228 SEIFERT 3-228
SIRE: SEI150143 SEIFERT BELMONT 150143
 MON980035 MONTPELLIER 98-035
 MON020060 MONTPELLIER 02-60
 MON990002 MONTPELLIER 99-2
ANIMAL: SEI190571 SEIFERT BELMONT 190571
 HAP070204 HAPPY HILL 07-204 (AI)
 HAP120300 HAPPY HILL 12 - 300
 HAP090251 HAPPY HILL 09-251
DAM: SEI150272 SEIFERT 150272
 MON030013 MONTPELLIER 03-13
 MON080484 MONTPELLIER 08-484
 SEI0000G3 SEIFERT GENERIC BR DAM



This super-quiet, big framed bull is not surprisingly above the top 1% for both growth and carcass weight EBVs, as well as in the top 15% for SS (scrotal size) which places him in the top 10% on the domestic and export \$indexes. His dam is a solid performer on her 5th calf in a row. Scrotal Size 37cm in April.

June 2020 Belmont Red GROUP BREEDPLAN

	GL	BW	200	400	600	MC	Milk	SS	DC	CW	EMA	Rib	Rump	RBY	IMF	Domestic	Export
EBV	-0.9	4.5	26	49	75	113	6	2.5	3.1	51	3.2	-0.9	-0.8	0.8	0.2	\$29	\$36
Acc	27%	58%	72%	72%	75%	69%	47%	72%	41%	59%	56%	61%	59%	45%	53%		

Breed Avg. EBVs for 2018 Born Calves

EBV	-1.1	+2.4	+18	+22	+32	+40	+8	+1.5	-1.7	+24	+2.3	-0.2	+0.4	+0.6	+0.2	+\$20	+\$24
-----	------	------	-----	-----	-----	-----	----	------	------	-----	------	------	------	------	------	-------	-------

Traits Observed: GL, BWT, 200WT, 400WT(x2), 600WT, SS, FAT, EMA, IMF, FLT

Purchaser

\$



SEIFERT BELMONT REDS

ID: SEI190527 **DOB:** 01/10/2018 **AGE:** 22.0 Mths **REGO STATUS:** REGISTERED
GRADE: PURE BR **HORN:** POLLED **DNA TEST:** PH

BEL070211 BELMONT 070211
 SEI130539 SEIFERT 130539
 JIS030228 SEIFERT 3-228
SIRE: SEI150143 SEIFERT BELMONT 150143
 MON980035 MONTPELLIER 98-035
 MON020060 MONTPELLIER 02-60
 MON990002 MONTPELLIER 99-2
ANIMAL: SEI190527 SEIFERT BELMONT 190527
 BEL070211 BELMONT 070211
 SEI130071 SEIFERT 130071
 MON070332 MONTPELLIER 0332
DAM: SEI150220 SEIFERT 150220
 SEI100005 SEIFERT 0005
 SEI120068 SEIFERT 120068
 MON040100 MONTPELLIER 04-100



Not surprisingly this growthy bull is in the top 1% for growth and carcass weight and will also breed fertile daughters with a SS (scrotal size) EBV in the top 10%. This places him in the top 10% on the domestic \$index. Scrotal Size 41cm in April.

June 2020 Belmont Red GROUP BREEDPLAN																	
	GL	BW	200	400	600	MC	Milk	SS	DC	CW	EMA	Rib	Rump	RBY	IMF	Domestic	Export
EBV	-1.3	5.3	30	48	69	103	8	2.7	-0.4	47	2	-0.6	-0.2	0.6	0.1	\$29	\$35
Acc	26%	57%	72%	72%	76%	69%	45%	72%	40%	59%	56%	61%	59%	45%	53%		
Breed Avg. EBVs for 2018 Born Calves																	
EBV	-1.1	+2.4	+18	+22	+32	+40	+8	+1.5	-1.7	+24	+2.3	-0.2	+0.4	+0.6	+0.2	+\$20	+\$24

Traits Observed: GL, BWT, 200WT, 400WT(x2), 600WT, SS, FAT, EMA, IMF, FLT

Purchaser \$



SEIFERT BELMONT REDS

ID: SEI190661 **DOB:** 07/10/2018 **AGE:** 21.8 Mths **REGO STATUS:** REGISTERED
GRADE: PURE BR **HORN:** POLLED **DNA TEST:** PH

MON040011 MONTPELLIER 04-11
 SEI090377 SEIFERT TEDSTAR
 COR030089 CORYMBIA 0089
SIRE: SEI160037 SEIFERT BELMONT 160037
 MON040011 MONTPELLIER 04-11
 SEI090344 SEIFERT BELMONT DOLLY
 MON040044 MONTPELLIER 04-44
ANIMAL: SEI190661 SEIFERT BELMONT 190661
 SEI100005 SEIFERT 0005
 SEI120021 SEIFERT GERONIMO
 SEI090180 SEIFERT 09 0180SEI
DAM: SEI160156 SEIFERT BELMONT 160156
 SEI080231 SEIFERT 08 0231SEI
 SEI130030 SEIFERT 130030
 MON020014 MONTPELLIER 02-14



An extraordinarily quiet bull, with extraordinary EBVs, he still has some growing to do. This bull is the most profitable bull in the sale and possibly the Belmont Red breed at present. He has fertility, carcass, and growth in one complete package, positioning him in the top value (>1%) on the domestic and export \$indexes. His grand-dam is the most profitable female ever in the Belmont Red breed - she is still in our herd and we have cloned her. We have retained his brother. Scrotal Size 38cm in April.

June 2020 Belmont Red GROUP BREEDPLAN																	
	GL	BW	200	400	600	MC	Milk	SS	DC	CW	EMA	Rib	Rump	RBY	IMF	Domestic	Export
EBV	-1.2	4.6	36	54	93	121	15	1.8	-4.3	51	2.9	-0.1	0.8	0.4	0	\$41	\$57
Acc	32%	57%	71%	72%	75%	68%	46%	72%	43%	60%	57%	61%	59%	47%	54%		
Breed Avg. EBVs for 2018 Born Calves																	
EBV	-1.1	+2.4	+18	+22	+32	+40	+8	+1.5	-1.7	+24	+2.3	-0.2	+0.4	+0.6	+0.2	+\$20	+\$24

Traits Observed: GL, BWT, 200WT, 400WT(x2), 600WT, SS, FAT, EMA, IMF, FLT

Purchaser \$

LOT
9

SEIFERT BELMONT REDS

ID: SEI190177 **DOB:** 19/09/2018 **AGE:** 22.4 Mths **REGO STATUS:** REGISTERED
GRADE: PURE BR **HORN:** POLLED **DNA TEST:** PH

SEI110155 SEIFERT 110155
 SEI140287 SEIFERT BELMONT 140287
 MON080462 MONTELLIER 0462

SIRE: SEI170191 SEIFERT BELMONT 170191
 HAP120300 HAPPY HILL 12 - 300

SEI140128 SEIFERT 140128
 JIS080469 SEIFERT JIS 08-469

ANIMAL: SEI190177 SEIFERT BELMONT 190177
 COR050034 CORYMBIA 05-34
 SEI080231 SEIFERT 08 0231SEI
 COR050057 CORYMBIA 05-57

DAM: SEI130030 SEIFERT 130030
 MON980035 MONTELLIER 98-035
 MON020014 MONTELLIER 02-14
 MON930272 MONTELLIER 93-272



A later maturing and heavy bullock-type bull, he has a lot more growing to do. Not surprisingly he is in the top 20% for 600D growth and is also above the top 5% for EMA (eye muscle area) and top 15% for RBY (retail beef yield). His dam is a stayer now on her 6th calf in a row. Scrotal Size 39cm in April.

June 2020 Belmont Red GROUP BREEDPLAN

	GL	BW	200	400	600	MC	Milk	SS	DC	CW	EMA	Rib	Rump	RBY	IMF	Domestic	Export
EBV		4.2	23	31	45	60	7	0.8	1.5	37	4.7	0.6	1.1	0.9	0.2	\$21	\$25
Acc	0%	57%	71%	71%	74%	68%	44%	71%	40%	58%	54%	58%	57%	44%	51%		

Breed Avg. EBVs for 2018 Born Calves

EBV	-1.1	+2.4	+18	+22	+32	+40	+8	+1.5	-1.7	+24	+2.3	-0.2	+0.4	+0.6	+0.2	+\$20	+\$24
-----	------	------	-----	-----	-----	-----	----	------	------	-----	------	------	------	------	------	-------	-------

Traits Observed: GL, BW, 200WT, 400WT(x2), 600WT, SS, FAT, EMA, IMF, FLT

Purchaser \$

LOT
10

SEIFERT BELMONT REDS

ID: SEI190697 **DOB:** 01/11/2018 **AGE:** 21.0 Mths **REGO STATUS:** REGISTERED
GRADE: PURE BR **HORN:** POLLED **DNA TEST:** PH

BEL070211 BELMONT 070211
 SEI130539 SEIFERT 130539
 JIS030228 SEIFERT 3-228

SIRE: SEI150143 SEIFERT BELMONT 150143
 MON980035 MONTELLIER 98-035
 MON020060 MONTELLIER 02-60

ANIMAL: SEI190697 SEIFERT BELMONT 190697
 MON990002 MONTELLIER 99-2
 KER050345 KER-RON 05-345 (AI)
 SEI120143 SEIFERT 120143
 SEI05078J SEIFERT 07-78J

DAM: SEI150112 SEIFERT 150112
 SEI11MS01 SEI060017 & SEI080251
 SEI110298 SEIFERT 110298
 SEI030105 SEIFERT 0105



One of the youngest, but one of the heaviest in the sale, this bull is showing great growth and carcase potential, with both traits in the top 1%. His SS (scrotal size) EBV is in the top 1% and EMA (eye muscle area) in the top 15% which positions him in the top 5% on the export \$index. He is out of a yearling mated heifer with staying power who is on her 5th calf in a row. Scrotal Size 39cm in April.

June 2020 Belmont Red GROUP BREEDPLAN

	GL	BW	200	400	600	MC	Milk	SS	DC	CW	EMA	Rib	Rump	RBY	IMF	Domestic	Export
EBV	-1	5.2	30	49	73	104	7	3.6	1.4	48	3.5	-0.7	-0.5	1	0.1	\$30	\$38
Acc	25%	55%	68%	70%	73%	66%	44%	70%	38%	57%	54%	59%	57%	43%	52%		

Breed Avg. EBVs for 2018 Born Calves

EBV	-1.1	+2.4	+18	+22	+32	+40	+8	+1.5	-1.7	+24	+2.3	-0.2	+0.4	+0.6	+0.2	+\$20	+\$24
-----	------	------	-----	-----	-----	-----	----	------	------	-----	------	------	------	------	------	-------	-------

Traits Observed: GL, BW, 200WT, 400WT(x2), 600WT, SS, FAT, EMA, IMF, FLT

Purchaser \$

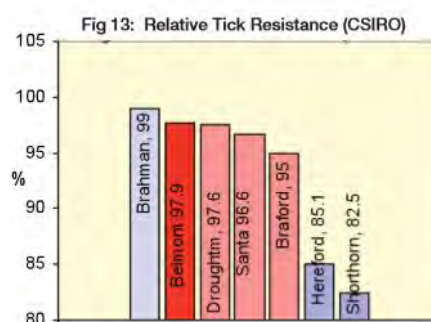
Are you sick of treating for cattle ticks and fly?

Did you know we never treat for ticks or fly (unless we have to clear to clean country) which means our cattle maintain their natural inherent parasite resistance at very high levels. Natural tick resistance is also the most ecologically sound and the most economical method (free!) available for tick control - no time and money

spent on wages for repeated musters to dip; no back rubbers, fly tags, injectables, or pour on's means we are not facilitating chemical resistance nor affecting dung beetle populations.

CSIRO tick resistance trials identified that the Belmont Reds tick resistance was 98% which means that only 2 of

100 seed tick complete their lifecycle. By comparison the Shorthorn's resistance was 82% which means that 18 out of 100 seed ticks survive. The Belmont Red is therefore 9 times more tick resistant than the Shorthorn for instance. Tick resistance is highly heritable, and is a highly effective, natural and sustainable method of controlling ticks.



The Belmonts tick resistance of 98% (Fig. 13) means that only 2 of 100 seed ticks complete their lifecycle, while 82% resistance of the Shorthorn means that 18 out of 100 seed ticks survive. The Belmont is therefore 9 times more resistant than the Shorthorn. Using the Belmont is therefore an effective and sustainable method of controlling ticks.

regional &
agribusiness



LOT
11

SEIFERT BELMONT REDS

ID: SEI190179 **DOB:** 15/10/2018 **AGE:** 21.5 Mths **REGO STATUS:** REGISTERED
GRADE: PURE BR **HORN:** POLLED **DNA TEST:** PH

SEI090377 SEIFERT TEDSTAR
 SEI130061 SEIFERT 130061
 SEI080322 SEIFERT 08 0322

SIRE: SEI170107 SEIFERT BELMONT 170107

SEI04MS02 W.S MULTI SIRE

SEI100156 SEIFERT 0 0156

COR040041 CORYMBIA 04-41

ANIMAL: SEI190179 SEIFERT BELMONT 190179

COR04MS01 MULTIPLE SIRES 2004

COR040030 CORYMBIA 04-30

NAR000247 NARAYEN 00/247

DAM: SEI080262 SEIFERT 08 0262

COR04MS01 MULTIPLE SIRES 2004

COR040033 CORYMBIA 04-33

COR010070 CORYMBIA 0070



A well-muscled long bull, packing some weight, and with fantastic fertility and carcass EBVs. He is above the top 1% for carcass weight and top 15% for RBV (retail beef yield) as well as being in the top 5% for SS (scrotal size) and top 35% for DTC (days to calving) which puts him in the top 5% on the export index. He is out of a great cow who has had 9 calves in a row and is PTIC with the 10th. Scrotal size 40cm in April.

June 2020 Belmont Red GROUP BREEDPLAN

	GL	BW	200	400	600	MC	Milk	SS	DC	CW	EMA	Rib	Rump	RBV	IMF	Domestic	Export
EBV	-1.3	4.9	31	42	67	85	9	3.1	-3	46	2.7	-1	-0.9	0.9	0	\$30	\$41
Acc	37%	75%	73%	73%	76%	70%	47%	72%	42%	62%	54%	57%	56%	44%	50%		

Breed Avg. EBVs for 2018 Born Calves

EBV	-1.1	+2.4	+18	+22	+32	+40	+8	+1.5	-1.7	+24	+2.3	-0.2	+0.4	+0.6	+0.2	+\$20	+\$24
-----	------	------	-----	-----	-----	-----	----	------	------	-----	------	------	------	------	------	-------	-------

Traits Observed: GL, BW, 200WT, 400WT(x2), 600WT, SS, FAT, EMA, IMF, FLT

Purchaser

\$

LOT
12

SEIFERT BELMONT REDS

ID: SEI190125 **DOB:** 06/09/2018 **AGE:** 22.8 Mths **REGO STATUS:** REGISTERED
GRADE: PURE BR **HORN:** SCURRED **DNA TEST:** PH

SEI110155 SEIFERT 110155
 SEI140287 SEIFERT BELMONT 140287
 MON080462 MONTPELLIER 0462

SIRE: SEI170191 SEIFERT BELMONT 170191

HAP120300 HAPPY HILL 12 - 300

SEI140128 SEIFERT 140128

JIS080469 SEIFERT JIS 08-469

ANIMAL: SEI190125 SEIFERT BELMONT 190125

MON040011 MONTPELLIER 04-11

SEI090377 SEIFERT TEDSTAR

COR030089 CORYMBIA 0089

DAM: SEIFERT 140060

06 WS multi

SEI080322 SEIFERT 08 0322



A great carcass bull. Heavy and with a broad, flat back, his EMA (eye muscle area) is in the top 25% and carcass weight is in the top 15%. He is out of a proven cow who is on her 6th calf in a row. Scrotal Size of 40cm in April.

June 2020 Belmont Red GROUP BREEDPLAN

	GL	BW	200	400	600	MC	Milk	SS	DC	CW	EMA	Rib	Rump	RBV	IMF	Domestic	Export
EBV	0.1	3.5	16	27	41	64	8	1.2	-1.3	32	3.3	-0.9	-1.1	0.6	-0.1	\$21	\$26
Acc	27%	53%	67%	67%	63%	61%	41%	69%	38%	54%	52%	53%	52%	41%	48%		

Breed Avg. EBVs for 2018 Born Calves

EBV	-1.1	+2.4	+18	+22	+32	+40	+8	+1.5	-1.7	+24	+2.3	-0.2	+0.4	+0.6	+0.2	+\$20	+\$24
-----	------	------	-----	-----	-----	-----	----	------	------	-----	------	------	------	------	------	-------	-------

Traits Observed: GL, BW, 200WT, 400WT(x2), 600WT, SS, FAT, EMA, IMF, FLT

Purchaser

\$

LOT
13

SEIFERT BELMONT REDS

ID: SEI190471 **DOB:** 15/11/2018 **AGE:** 20.5 Mths **REGO STATUS:** REGISTERED
GRADE: PURE BR **HORN:** POLLED **DNA TEST:** PH

MON040011 MONTPELLIER 04-11
 SEI090377 SEIFERT TEDSTAR
 COR030089 CORYMBIA 0089
SIRE: SEI160037 SEIFERT BELMONT 160037
 MON040011 MONTPELLIER 04-11
 SEI090344 SEIFERT BELMONT DOLLY
 MON040044 MONTPELLIER 04-44

ANIMAL: SEI190471 SEIFERT BELMONT 190471

TRD09P406 TOORIDGE P406
 SEI140129 SEIFERT 140129
 BEL090141 BELMONT 090141

DAM: SEI160122 SEIFERT BELMONT 160122

SEI13MS04 TRE100173, TRE100067
 SEI130182 SEIFERT 130182
 BEL080278 BELMONT 080278



The second most profitable bull in the sale according to his EBV's, this beautifully built youngster is also one of the youngest in the sale and is by one of the top indexing bulls in the breed. He has an epic suite of traits which positions him at the top in the 'top value' (above the top 1%) on the domestic and export \$indexes. Scrotal Size 34cm in April.

June 2020 Belmont Red GROUP BREEDPLAN

	GL	BW	200	400	600	MC	Milk	SS	DC	CW	EMA	Rib	Rump	RBY	IMF	Domestic	Export
EBV	-1.5	5.2	36	60	94	136	15	2.4	-0.7	54	3.2	-0.5	-0.2	1	0.1	\$42	\$54
Acc	29%	56%	70%	71%	74%	67%	43%	71%	40%	58%	55%	59%	58%	45%	52%		

Breed Avg. EBVs for 2018 Born Calves

EBV	-1.1	+2.4	+18	+22	+32	+40	+8	+1.5	-1.7	+24	+2.3	-0.2	+0.4	+0.6	+0.2	+\$20	+\$24
-----	------	------	-----	-----	-----	-----	----	------	------	-----	------	------	------	------	------	-------	-------

Traits Observed: GL, BWT, 200WT, 400WT(x2), 600WT, SS, FAT, EMA, IMF, FLT

Purchaser \$

LOT
14

SEIFERT BELMONT REDS

ID: SEI190019 **DOB:** 25/08/2018 **AGE:** 23.2 Mths **REGO STATUS:** REGISTERED
GRADE: PURE BR **HORN:** SCURRED **DNA TEST:** PH

SEI090377 SEIFERT TEDSTAR
 SEI140269 SEIFERT 140269
 MON040122 MONTPELLIER 0122 (COM)
SIRE: SEI160055 SEIFERT BELMONT LIMELIGHT
 MON030013 MONTPELLIER 03-13
 MON080472 MONTPELLIER 08-472
 SEI0000G2 SEIFERT GENERIC BR DAM

ANIMAL: SEI190019 SEIFERT BELMONT 190019

SEI100005 SEIFERT 0005
 SEI120021 SEIFERT GERONIMO
 SEI090180 SEIFERT 09 0180SEI

DAM: SEI160220 SEIFERT BELMONT 160220

TRE070059 TREMERE 07-59
 SEI110232 SEIFERT 110232
 SEI080316 SEIFERT 08 0316



A handy and heavy bull, with high growth in the top 5% for 600D, but with favourable average BW (birth weight), and negative DTC (days to calving) this positions him in the top 5% on the export \$index. Scrotal Size of 35cm in April.

June 2020 Belmont Red GROUP BREEDPLAN

	GL	BW	200	400	600	MC	Milk	SS	DC	CW	EMA	Rib	Rump	RBY	IMF	Domestic	Export
EBV	-1.3	2.4	26	38	62	69	9	1.1	-1.2	35	2.2	-0.8	-0.7	0.6	0	\$29	\$39
Acc	58%	75%	73%	73%	76%	70%	41%	73%	40%	62%	57%	61%	59%	47%	54%		

Breed Avg. EBVs for 2018 Born Calves

EBV	-1.1	+2.4	+18	+22	+32	+40	+8	+1.5	-1.7	+24	+2.3	-0.2	+0.4	+0.6	+0.2	+\$20	+\$24
-----	------	------	-----	-----	-----	-----	----	------	------	-----	------	------	------	------	------	-------	-------

Traits Observed: GL, BWT, 200WT, 400WT(x2), 600WT, SS, FAT, EMA, IMF, FLT

Purchaser \$

LOT
15

SEIFERT BELMONT REDS

ID: SEI190153 **DOB:** 10/10/2018 **AGE:** 21.7 Mths **REGO STATUS:** REGISTERED
GRADE: PURE BR **HORN:** POLLED **DNA TEST:** PP

SEI090377 SEIFERT TEDSTAR
 SEI130061 SEIFERT 130061
 SEI080322 SEIFERT 08 0322
SIRE: SEI170097 SEIFERT BELMONT 170097
 KER050345 KER-RON 05-345 (AI)
 SEI120114 SEIFERT 120114
 SEI080050 SEIFERT STAR ANISE
ANIMAL: SEI190153 SEIFERT BELMONT 190153
 COR050034 CORYMBIA 05-34
 SEI080231 SEIFERT 08 0231SEI
 COR050057 CORYMBIA 05-57
DAM: SEI130098 SEIFERT 130098
 MON000045 MONTPELLIER 00-45
 MON030024 MONTPELLIER 03-24
 MON990092 MONTPELLIER 99-92



A very quiet, deep, smooth Homozygous Poll with high growth and top carcass traits. He is above the top 5% for carcass weight and EMA (eye muscle area) and in the top 10% for RBY (retail beef yield). This is combined with 600D growth in the top 1% and rib fat in the top 10%. His dam is a proven cow on her 5th calf in a row. Scrotal Size 38cm in April.

June 2020 Belmont Red GROUP BREEDPLAN																	
	GL	BW	200	400	600	MC	Milk	SS	DC	CW	EMA	Rib	Rump	RBY	IMF	Domestic	Export
EBV	-1.2	3.8	27	45	64	90	10	1.1	-0.9	42	4.5	0.6	1.2	0.8	-0.2	\$34	\$41
Acc	37%	74%	71%	72%	74%	69%	43%	71%	38%	60%	55%	59%	57%	45%	51%		
Breed Avg. EBVs for 2018 Born Calves																	
EBV	-1.1	+2.4	+18	+22	+32	+40	+8	+1.5	-1.7	+24	+2.3	-0.2	+0.4	+0.6	+0.2	+\$20	+\$24

Traits Observed: GL, BWT, 200WT, 400WT(x2), 600WT, SS, FAT, EMA, IMF, FLT

Purchaser \$

HALL CHADWICK 
 CHARTERED ACCOUNTANTS & BUSINESS ADVISORS | QLD

LOT
16

SEIFERT BELMONT REDS

ID: SEI190071 **DOB:** 19/09/2018 **AGE:** 22.4 Mths **REGO STATUS:** REGISTERED
GRADE: PURE BR **HORN:** POLLED **DNA TEST:** PH

SAAG91130 AG 91-130 (BONS.) (IMP Sth AF)
 ISAGRC9714 GRC9714 (P) (IMP STH AF) (ET)
 SAIVYN142 IVY N 142 (BONS.) (IMP Sth AF)

SIRE: VAL01B808 VALINOR B808 (IVF)

VAL91V655 VALINOR 655
 VAL96V182 VALINOR 96-V182 (B)
 BAN870N55 BANGALLA 87-N55

ANIMAL: SEI190071 SEIFERT BELMONT 190071

TRE010765 TREMERE 010765
 TRE050123 TREMERE 050123
 TRE930480 TREMERE 93-480

DAM: SEI080012 SEIFERT BELMONT 08 0012

MON980035 MONTPELLIER 98-035
 MON020014 MONTPELLIER 02-14
 MON930272 MONTPELLIER 93-272



A very beefy, light red IVF calf by outside sire VAL01B808. He is a full brother to 190053 being out of the same good cow who had 8/8 calves in a row. He is in the top 15% in the export \$index. Scrotal Size 40cm in April.

June 2020 Belmont Red GROUP BREEDPLAN

	GL	BW	200	400	600	MC	Milk	SS	DC	CW	EMA	Rib	Rump	RBY	IMF	Domestic	Export
EBV	-1.1	2.7	25	30	54	61	4	1.2	0.1	29	2.8	-0.1	0.1	0.7	0	\$23	\$33
Acc	47%	75%	72%	72%	75%	69%	51%	71%	42%	62%	55%	58%	56%	45%	50%		

Breed Avg. EBVs for 2018 Born Calves

EBV	-1.1	+2.4	+18	+22	+32	+40	+8	+1.5	-1.7	+24	+2.3	-0.2	+0.4	+0.6	+0.2	+\$20	+\$24
-----	------	------	-----	-----	-----	-----	----	------	------	-----	------	------	------	------	------	-------	-------

Traits Observed: GL, BWT, 200WT, 400WT(x2), 600WT, SS, FAT, EMA, IMF, FLT

Purchaser \$

LOT
17

SEIFERT BELMONT REDS

ID: SEI190011 **DOB:** 09/08/2018 **AGE:** 23.7 Mths **REGO STATUS:** REGISTERED
GRADE: PURE BR **HORN:** SCURRED **DNA TEST:** PH

BEL070211 BELMONT 070211
 SEI130539 SEIFERT 130539
 JIS030228 SEIFERT 3-228
SIRE: SEI150301 SEIFERT BELMONT 150301
 MON990041 MONTPELLIER 99-41
 MON030002 MONTPELLIER 03-2
 MON980284 MONTPELLIER 98-284
ANIMAL: SEI190011 SEIFERT BELMONT 190011
 SEI090377 SEIFERT TEDSTAR
 SEI130087 SEIFERT 130087
 SEI080014 SEIFERT 08-14
DAM: SEI160062 SEIFERT BELMONT 160062
 COR04MS01 MULTIPLE SIRES 2004
 COR040025 CORYMBIA 04-25
 COR010104 CORYMBIA 0104



A dark red, deep, and long bull, with a curve bending low BW (birth weight) EBV but with high growth, being above the top 25% for 400D and 600D. Scrotal Size of 36cm in April.

June 2020 Belmont Red GROUP BREEDPLAN

	GL	BW	200	400	600	MC	Milk	SS	DC	CW	EMA	Rib	Rump	RBY	IMF	Domestic	Export
EBV	-4.2	0.7	16	28	42	53	10	1.2	-2.5	18	-0.9	-0.2	1.1	-0.1	0.2	\$25	\$30
Acc	56%	61%	72%	72%	75%	69%	46%	72%	40%	60%	56%	61%	59%	46%	53%		

Breed Avg. EBVs for 2018 Born Calves

EBV	-1.1	+2.4	+18	+22	+32	+40	+8	+1.5	-1.7	+24	+2.3	-0.2	+0.4	+0.6	+0.2	+\$20	+\$24
-----	------	------	-----	-----	-----	-----	----	------	------	-----	------	------	------	------	------	-------	-------

Traits Observed: GL, BWT, 200WT, 400WT(x2), 600WT, SS, FAT, EMA, IMF, FLT

Purchaser \$

LOT
18

SEIFERT BELMONT REDS

ID: SEI190155 **DOB:** 08/10/2018 **AGE:** 21.7 Mths **REGO STATUS:** REGISTERED
GRADE: PURE BR **HORN:** POLLED **DNA TEST:** PP

BEL070211 BELMONT 070211
 SEI130539 SEIFERT 130539
 JIS030228 SEIFERT 3-228
SIRE: SEI150301 SEIFERT BELMONT 150301
 MON990041 MONTPELLIER 99-41
 MON030002 MONTPELLIER 03-2
 MON980284 MONTPELLIER 98-284

ANIMAL: SEI190155 SEIFERT BELMONT 190155
 BAU992007 BONSMARA AUST. 99-2007
 BAU030005 BONSMARA AUST. 030005 (ET)
 BAU992002 BONSMARA AUST. 99-2002

DAM: BEL090367 BELMONT 090367
 BEL960319 BELMONT 96-319
 BEL020118 BELMONT 02-0118
 BEL950692 BELMONT 95-692



A heavy, later maturing homozygous poll bull, out of an 'oldy but a goody'. He is out of a CSIRO cow who has had 9 calves in a row and is PTIC with her 10th. He has growth and Scrotal EBVs in the top 10% and carcass weight and RBY (retail beef yield) in the top 30% putting him in the top 15% on the domestic index. Scrotal size 35cm in April.

June 2020 Belmont Red GROUP BREEDPLAN

	GL	BW	200	400	600	MC	Milk	SS	DC	CW	EMA	Rib	Rump	RBY	IMF	Domestic	Export
EBV	-1.5	1.8	22	32	49	65	10	2.8	-0.4	28	1.3	-0.8	-0.9	0.7	0	\$27	\$32
Acc	51%	77%	74%	74%	77%	71%	54%	74%	43%	64%	58%	60%	59%	48%	54%		

Breed Avg. EBVs for 2018 Born Calves

EBV	-1.1	+2.4	+18	+22	+32	+40	+8	+1.5	-1.7	+24	+2.3	-0.2	+0.4	+0.6	+0.2	+\$20	+\$24
-----	------	------	-----	-----	-----	-----	----	------	------	-----	------	------	------	------	------	-------	-------

Traits Observed: GL, BWT, 200WT, 400WT(x2), 600WT, SS, FAT, EMA, IMF, FLT

Purchaser \$

LOT
19

SEIFERT BELMONT REDS

ID: SEI190233 **DOB:** 28/09/2018 **AGE:** 22.1 Mths **REGO STATUS:** REGISTERED
GRADE: PURE BR **HORN:** POLLED **DNA TEST:** PP

BEL070211 BELMONT 070211
 SEI130539 SEIFERT 130539
 JIS030228 SEIFERT 3-228
SIRE: SEI150301 SEIFERT BELMONT 150301
 MON990041 MONTPELLIER 99-41
 MON030002 MONTPELLIER 03-2
 MON980284 MONTPELLIER 98-284

ANIMAL: SEI190233 SEIFERT BELMONT 190233
 MON000043 MONTPELLIER 00-43
 MON030017 MONTPELLIER 03-17
 MON960212 MONTPELLIER 96-212

DAM: NOR090010 NOR 09-10
 BEL870257 BELMONT 87-257
 MON980222 MONTPELLIER 98-222 (AI)
 MON940038 MONTPELLIER 94-38



One of my favourites, this very appealing and very quiet homozygous poll bull is in the top 10% for 600D growth and top 15% for carcass weight as well as in the top 20% for SS (scrotal size). He is out of a bought cow who had 3 calves in a row. Scrotal Size 37cm in April.

June 2020 Belmont Red GROUP BREEDPLAN

	GL	BW	200	400	600	MC	Milk	SS	DC	CW	EMA	Rib	Rump	RBY	IMF	Domestic	Export
EBV	-1.5	3	20	33	50	73	6	2.3	-0.2	32	2.5	-0.4	-0.2	0.7	0.1	\$26	\$31
Acc	43%	62%	72%	72%	75%	68%	50%	73%	42%	60%	56%	59%	57%	46%	53%		

Breed Avg. EBVs for 2018 Born Calves

EBV	-1.1	+2.4	+18	+22	+32	+40	+8	+1.5	-1.7	+24	+2.3	-0.2	+0.4	+0.6	+0.2	+\$20	+\$24
-----	------	------	-----	-----	-----	-----	----	------	------	-----	------	------	------	------	------	-------	-------

Traits Observed: GL, BWT, 200WT, 400WT(x2), 600WT, SS, FAT, EMA, IMF, FLT

Purchaser \$

LOT
20

SEIFERT BELMONT REDS

ID: SEI190243 **DOB:** 17/10/2018 **AGE:** 21.4 Mths **REGO STATUS:** REGISTERED
GRADE: PURE BR **HORN:** POLLED **DNA TEST:** PP

SEI120051 SEIFERT 120051
 SEI140171 SEIFERT 140171
 SEI080214 SEIFERT 08 0214
SIRE: SEI160023 SEIFERT BELMONT 160023
 BEL070211 BELMONT 070211
 SEI130348 SEIFERT 130348
 MON060200 MONTPELLIER 06-2
ANIMAL: SEI190243 SEIFERT BELMONT 190243
 HAP070204 HAPPY HILL 07-204 (AI)
 HAP110286 HAPPY HILL 11-286
 HAP060159 HAPPY HILL 06-159
DAM: SEI140302 SEIFERT 140302
 MON040055 MONTPELLIER 04-55
 SEI070248 SEIFERT 07-248
 MON030047 MONTPELLIER 03-47



Another one of our personal favourites, this quiet, well-put-together Homozygous Poll has above average growth and a carcass weight EBV in the top 10%. His dam is a stayer on her 5th calf in a row. Scrotal Size 41cm in April.

June 2020 Belmont Red GROUP BREEDPLAN

	GL	BW	200	400	600	MC	Milk	SS	DC	CW	EMA	Rib	Rump	RBY	IMF	Domestic	Export
EBV	-0.1	4.9	21	39	49	68	9	2.8	-0.6	35	1.6	-0.3	0.5	0.5	0.3	\$23	\$24
Acc	39%	75%	73%	73%	76%	70%	41%	72%	39%	61%	56%	59%	58%	45%	52%		

Breed Avg. EBVs for 2018 Born Calves

EBV	-1.1	+2.4	+18	+22	+32	+40	+8	+1.5	-1.7	+24	+2.3	-0.2	+0.4	+0.6	+0.2	+\$20	+\$24
-----	------	------	-----	-----	-----	-----	----	------	------	-----	------	------	------	------	------	-------	-------

Traits Observed: GL, BWT, 200WT, 400WT(x2), 600WT, SS, FAT, EMA, IMF, FLT

Purchaser \$

LOT
21

SEIFERT BELMONT REDS

ID: SEI190811 **DOB:** 18/10/2018 **AGE:** 21.4 Mths **REGO STATUS:** REGISTERED
GRADE: PURE BR **HORN:** POLLED **DNA TEST:** PH

SEI090377 SEIFERT TEDSTAR
 SEI130061 SEIFERT 130061
 SEI080322 SEIFERT 08 0322
SIRE: SEI170097 SEIFERT BELMONT 170097
 KER050345 KER-RON 05-345 (AI)
 SEI120114 SEIFERT 120114
 SEI080050 SEIFERT STAR ANISE
ANIMAL: SEI190811 SEIFERT BELMONT 190811
 SEI090377 SEIFERT TEDSTAR
 SEI120051 SEIFERT 120051
 MON010042 MONTPELLIER 01-42
DAM: SEI140118 SEIFERT 140118
 KER050345 KER-RON 05-345 (AI)
 KER110786 KER-RON 11-786
 KER060413 KER-RON 06-413



Another cracker of a carcass bull and one of only five sons of SEI170097 in the sale. This bull has the highest EMA (eye muscle area) and RBY (retail beef yield) EBVs in the sale, both sitting in the top 1%. He also has a SS (scrotal size) EBV in the top 5%, positioning him in the top 1% on the domestic index. Scrotal Size 40cm in April.

June 2020 Belmont Red GROUP BREEDPLAN

	GL	BW	200	400	600	MC	Milk	SS	DC	CW	EMA	Rib	Rump	RBY	IMF	Domestic	Export
EBV	-1.2	5.2	30	52	66	105	10	3.5	0.2	53	5.5	0.1	0.1	1.4	-0.1	\$37	\$40
Acc	30%	59%	71%	71%	75%	68%	43%	72%	41%	59%	56%	59%	58%	45%	52%		

Breed Avg. EBVs for 2018 Born Calves

EBV	-1.1	+2.4	+18	+22	+32	+40	+8	+1.5	-1.7	+24	+2.3	-0.2	+0.4	+0.6	+0.2	+\$20	+\$24
-----	------	------	-----	-----	-----	-----	----	------	------	-----	------	------	------	------	------	-------	-------

Traits Observed: GL, BWT, 200WT, 400WT(x2), 600WT, SS, FAT, EMA, IMF, FLT

Purchaser \$

LOT
22

SEIFERT BELMONT REDS

ID: SEI190005 **DOB:** 26/08/2018 **AGE:** 23.2 Mths **REGO STATUS:** REGISTERED
GRADE: PURE BR **HORN:** POLLED **DNA TEST:** PP

BEL070211 BELMONT 070211
 SEI130539 SEIFERT 130539
 JIS030228 SEIFERT 3-228
SIRE: SEI150301 SEIFERT BELMONT 150301
 MON990041 MONTPELLIER 99-41
 MON030002 MONTPELLIER 03-2
 MON980284 MONTPELLIER 98-284

ANIMAL: SEI190005 SEIFERT BELMONT 190005
 SEI090377 SEIFERT TEDSTAR
 SEI140269 SEIFERT 140269
 MON040122 MONTPELLIER 0122 (COM)

DAM: SEI160454 SEIFERT BELMONT 160454

TRE050123 TREMERE 050123
 SEI080016 SEIFERT AURORA
 MON020048 MONTPELLIER 02-48



A beautiful smooth-coated Homozygous Poll, with favourable low BW (birth weight) and moderate MCW (mature cow weight) but above average growth. He is in the top 25% for 400D growth with favourable negative DTC (days to calving) and SS (scrotal size) both in the top 25%. Scrotal Size of 39cm in April.

June 2020 Belmont Red GROUP BREEDPLAN

	GL	BW	200	400	600	MC	Milk	SS	DC	CW	EMA	Rib	Rump	RBV	IMF	Domestic	Export
EBV	-2	0.7	18	28	38	42	11	1.7	-2.4	20	1.7	0.3	1.2	0.3	0.2	\$27	\$31
Acc	59%	75%	71%	68%	68%	64%	47%	56%	38%	59%	46%	52%	51%	42%	46%		

Breed Avg. EBVs for 2018 Born Calves

EBV	-1.1	+2.4	+18	+22	+32	+40	+8	+1.5	-1.7	+24	+2.3	-0.2	+0.4	+0.6	+0.2	+\$20	+\$24
-----	------	------	-----	-----	-----	-----	----	------	------	-----	------	------	------	------	------	-------	-------

Traits Observed: GL, BWT, 200WT, 400WT(x2), 600WT, SS, FAT, EMA, IMF, FLT

Purchaser

\$

LOT
23

SEIFERT BELMONT REDS

ID: SEI190039 **DOB:** 11/09/2018 **AGE:** 22.6 Mths **REGO STATUS:** REGISTERED
GRADE: PURE BR **HORN:** POLLED **DNA TEST:** PH

MON040011 MONTPELLIER 04-11
 SEI090377 SEIFERT TEDSTAR
 COR030089 CORYMBIA 0089

SIRE: SEI170053 SEIFERT BELMONT 170053 (AI)

TRE090231 TREMERE 090231
 SEI140432 SEIFERT 140432 (AI)
 SEI110196 SEIFERT 110196

ANIMAL: SEI190039 SEIFERT BELMONT 190039

TRD09P406 TOORIDGE P406
 SEI140129 SEIFERT 140129
 BEL090141 BELMONT 090141

DAM: SEI160042 SEIFERT BELMONT 160042

SEI13MS02 BEL110005, SEI110215, SEI110199
 SEI130360 SEIFERT 130360
 SEI110160 SEIFERT 110160



With a combination of muscling and marbling his carcass EBV is above the top 10%, RBV (retail beef yield) is in the top 15%, and IMF (intramuscular fat) is in the top 10%. Fertility traits of SS (scrotal size) is in the top 1%, and DTC (days to calving) is in the top 35%. He is in the top 15% on the domestic and export \$indexes. His dam is a proven stayer being on her 3rd calf in a row. Scrotal size of 39cm in April.

June 2020 Belmont Red GROUP BREEDPLAN

	GL	BW	200	400	600	MC	Milk	SS	DC	CW	EMA	Rib	Rump	RBV	IMF	Domestic	Export
EBV	-0.1	5.2	27	36	54	73	10	4.5	-3.2	35	3.2	-0.1	0.7	0.9	0.4	\$27	\$35
Acc	43%	75%	71%	71%	74%	68%	39%	70%	36%	60%	53%	57%	55%	44%	50%		

Breed Avg. EBVs for 2018 Born Calves

EBV	-1.1	+2.4	+18	+22	+32	+40	+8	+1.5	-1.7	+24	+2.3	-0.2	+0.4	+0.6	+0.2	+\$20	+\$24
-----	------	------	-----	-----	-----	-----	----	------	------	-----	------	------	------	------	------	-------	-------

Traits Observed: GL, BWT, 200WT, 400WT(x2), 600WT, SS, FAT, EMA, IMF, FLT

Purchaser

\$

LOT
24

SEIFERT BELMONT REDS

ID: SEI190569 **DOB:** 03/10/2018 **AGE:** 21.9 Mths **REGO STATUS:** REGISTERED
GRADE: PURE BR **HORN:** POLLED **DNA TEST:** PH

BEL070211 BELMONT 070211
 SEI130539 SEIFERT 130539
 JIS030228 SEIFERT 3-228

SIRE: SEI150143 SEIFERT BELMONT 150143

MON980035 MONTPELLIER 98-035
 MON020060 MONTPELLIER 02-60
 MON990002 MONTPELLIER 99-2

ANIMAL: SEI190569 SEIFERT BELMONT 190569

MON000043 MONTPELLIER 00-43
 MON030017 MONTPELLIER 03-17
 MON960212 MONTPELLIER 96-212

DAM: MON070332 MONTPELLIER 0332

SEI0000G2 SEIFERT GENERIC BR DAM



A very nicely put-together bull, with great carcase traits. His EMA (eye muscle area) EBV is in the top 10%, RBY (retail beef yield) in the top 15%, and carcase weight is in the top 5%. This places him in the top 20% on the domestic \$index. His dam is a young proven breeder on her 3rd calf in a row. Scrotal Size 38cm in April.

June 2020 Belmont Red GROUP BREEDPLAN

	GL	BW	200	400	600	MC	Milk	SS	DC	CW	EMA	Rib	Rump	RBY	IMF	Domestic	Export
EBV	-1.2	4.9	26	47	56	96	4	2.6	-0.5	43	3.1	0	0.6	0.8	0.3	\$31	\$32
Acc	29%	59%	72%	72%	75%	68%	50%	73%	40%	59%	56%	60%	58%	45%	53%		

Breed Avg. EBVs for 2018 Born Calves

EBV	-1.1	+2.4	+18	+22	+32	+40	+8	+1.5	-1.7	+24	+2.3	-0.2	+0.4	+0.6	+0.2	+\$20	+\$24
-----	------	------	-----	-----	-----	-----	----	------	------	-----	------	------	------	------	------	-------	-------

Traits Observed: GL, BWT, 200WT, 400WT(x2), 600WT, SS, FAT, EMA, IMF, FLT

Purchaser

\$

LOT
25

SEIFERT BELMONT REDS

ID: SEI190403 **DOB:** 16/11/2018 **AGE:** 20.5 Mths **REGO STATUS:** REGISTERED
GRADE: PURE BR **HORN:** SCURRED **DNA TEST:** PH

SEI090377 SEIFERT TEDSTAR
 SEI130061 SEIFERT 130061
 SEI080322 SEIFERT 08 0322

SIRE: SEI170097 SEIFERT BELMONT 170097

KER050345 KER-RON 05-345 (AI)
 SEI120114 SEIFERT 120114
 SEI080050 SEIFERT STAR ANISE

ANIMAL: SEI190403 SEIFERT BELMONT 190403

SEI06MS01 06 OAK
 SEI090187 SEIFERT 09 0187SEI
 MON050012 MONTPELLIER 05-12

DAM: SEI120254 SEIFERT 120254

MON950253 MONTPELLIER 95-253
 MON000064 MONTPELLIER 00-64
 MON970330 MONTPELLIER 970330



A top bull across the board with above average rib and rump fat, and in the top 10% for EMA (eye muscle area) the top 15% for RBY (retail beef yield), the top 25% for DTC (days to calving) and the top 15% for SS (scrotal size) which positions him in the top 1% on the export \$index. His dam was a proven breeder producing 5 calves in a row. Scrotal Size 37cm in April.

June 2020 Belmont Red GROUP BREEDPLAN

	GL	BW	200	400	600	MC	Milk	SS	DC	CW	EMA	Rib	Rump	RBY	IMF	Domestic	Export
EBV	-1.4	4.7	32	41	62	78	12	2.4	-4.2	42	3.8	0.4	1.1	0.9	0	\$33	\$43
Acc	28%	57%	70%	71%	74%	68%	47%	71%	42%	59%	55%	59%	58%	45%	52%		

Breed Avg. EBVs for 2018 Born Calves

EBV	-1.1	+2.4	+18	+22	+32	+40	+8	+1.5	-1.7	+24	+2.3	-0.2	+0.4	+0.6	+0.2	+\$20	+\$24
-----	------	------	-----	-----	-----	-----	----	------	------	-----	------	------	------	------	------	-------	-------

Traits Observed: GL, BWT, 200WT, 400WT(x2), 600WT, SS, FAT, EMA, IMF, FLT

Purchaser

\$

LOT
26

SEIFERT BELMONT REDS															
ID: SEI190549				DOB: 27/07/2018				AGE: 24.1 Mths				REGO STATUS: REGISTERED			
GRADE: PURE BR				HORN: POLLED				DNA TEST:				PH			

BEL070211 BELMONT 070211
SEI130539 SEIFERT 130539
JIS030228 SEIFERT 3-228

SIRE: SEI150143 SEIFERT BELMONT 150143

MON980035 MONTPELLIER 98-035
MON020060 MONTPELLIER 02-60
MON990002 MONTPELLIER 99-2

ANIMAL: SEI190549 SEIFERT BELMONT 190549

SEI110155 SEIFERT 110155
SEI140039 SEIFERT BELMONT 140039
COR040024 CORYMBIA 04-24

DAM: SEI160224 SEIFERT BELMONT 160224

SEI100300 SEIFERT 0 0300
SEI110016 SEIFERT 110016
SEI06008S SEIFERT 06-008S



A quiet, functional bull with growth and carcass weight EBVs in the top 20% and 10% respectively, which puts this bull in the top 15% on the domestic and export \$indexes. His dam is a stayer on her 3rd calf in a row.

June 2020 Belmont Red GROUP BREEDPLAN																	
	GL	BW	200	400	600	MC	Milk	SS	DC	CW	EMA	Rib	Rump	RBY	IMF	Domestic	Export
EBV	-0.9	3.1	19	36	54	82	5	1.6	-0.5	35	2.2	-0.4	0.1	0.5	0.2	\$27	\$33
Acc	26%	56%	71%	71%	74%	67%	44%	72%	40%	58%	55%	58%	57%	44%	51%		
Breed Avg. EBVs for 2018 Born Calves																	
EBV	-1.1	+2.4	+18	+22	+32	+40	+8	+1.5	-1.7	+24	+2.3	-0.2	+0.4	+0.6	+0.2	+\$20	+\$24

Traits Observed: GL, BWT, 200WT, 400WT(x2), 600WT, SS, FAT, EMA, IMF, FLT

Purchaser

\$

RIVERINA

LOT
27

SEIFERT BELMONT REDS

ID: SEI190007 **DOB:** 26/08/2018 **AGE:** 23.2 Mths **REGO STATUS:** REGISTERED
GRADE: PURE BR **HORN:** POLLED **DNA TEST:** PH

BEL070211 BELMONT 070211
 SEI130539 SEIFERT 130539
 JIS030228 SEIFERT 3-228
SIRE: SEI150301 SEIFERT BELMONT 150301
 MON990041 MONTPELLIER 99-41
 MON030002 MONTPELLIER 03-2
 MON980284 MONTPELLIER 98-284
ANIMAL: SEI190007 SEIFERT BELMONT 190007
 MON040011 MONTPELLIER 04-11
 SEI090377 SEIFERT TEDSTAR
 COR030089 CORYMBIA 0089
DAM: SEI160398 SEIFERT BELMONT 160398
 KER050345 KER-RON 05-345 (AI)
 SEI120232 SEIFERT 120232
 COR050057 CORYMBIA 05-57



This bull is a very quiet, great looking bull, with high marbling and great fertility traits. His IMF (intramuscular fat) EBV is in the top 10% and his DTC (days to calving) in the top 30% with SS (Scrotal Size) in the top 25%. Out of a young dam who PTIC with her 3rd calf in a row. Scrotal Size of 39cm in April.

June 2020 Belmont Red GROUP BREEDPLAN

	GL	BW	200	400	600	MC	Milk	SS	DC	CW	EMA	Rib	Rump	RBY	IMF	Domestic	Export
EBV	-2	1	17	29	44	58	12	2.1	-3.9	18	-0.1	0.5	2.1	-0.1	0.4	\$29	\$34
Acc	60%	76%	74%	74%	76%	71%	49%	73%	44%	63%	58%	62%	60%	48%	55%		

Breed Avg. EBVs for 2018 Born Calves

EBV	-1.1	+2.4	+18	+22	+32	+40	+8	+1.5	-1.7	+24	+2.3	-0.2	+0.4	+0.6	+0.2	+\$20	+\$24
-----	------	------	-----	-----	-----	-----	----	------	------	-----	------	------	------	------	------	-------	-------

Traits Observed: GL, BWT, 200WT, 400WT(x2), 600WT, SS, FAT, EMA, IMF, FLT

Purchaser \$

LOT
28

SEIFERT BELMONT REDS

ID: SEI190559 **DOB:** 30/07/2018 **AGE:** 24.0 Mths **REGO STATUS:** REGISTERED
GRADE: PURE BR **HORN:** POLLED **DNA TEST:** PH

BEL070211 BELMONT 070211
 SEI130539 SEIFERT 130539
 JIS030228 SEIFERT 3-228
SIRE: SEI150143 SEIFERT BELMONT 150143
 MON980035 MONTPELLIER 98-035
 MON020060 MONTPELLIER 02-60
 MON990002 MONTPELLIER 99-2
ANIMAL: SEI190559 SEIFERT BELMONT 190559
 SEI16MS03 SEI140137 & SEI140315
DAM: SEI160424 SEIFERT BELMONT 160424
 TRD09P406 TOORIDGE P406
 SEI130538 SEIFERT 130538
 MON050116 MONTPELLIER 05-116



A very nicely put-together bull, with great carcase traits. His EMA (eye muscle area) EBV is in the top 10%, RBY (retail beef yield) in the top 15%, and carcase weight is in the top 5%. This places him in the top 20% on the domestic \$index. His dam is a young proven breeder on her 3rd calf in a row. Scrotal Size 38cm in April.

June 2020 Belmont Red GROUP BREEDPLAN

	GL	BW	200	400	600	MC	Milk	SS	DC	CW	EMA	Rib	Rump	RBY	IMF	Domestic	Export
EBV		3	22	38	50	75	7	2.7	2.8	39	4	-0.3	-0.3	0.9	0.2	\$26	\$28
Acc	0%	54%	70%	70%	73%	66%	41%	71%	37%	56%	53%	56%	54%	42%	49%		

Breed Avg. EBVs for 2018 Born Calves

EBV	-1.1	+2.4	+18	+22	+32	+40	+8	+1.5	-1.7	+24	+2.3	-0.2	+0.4	+0.6	+0.2	+\$20	+\$24
-----	------	------	-----	-----	-----	-----	----	------	------	-----	------	------	------	------	------	-------	-------

Traits Observed: GL, BWT, 200WT, 400WT(x2), 600WT, SS, FAT, EMA, IMF, FLT

Purchaser \$

LOT
29

SEIFERT BELMONT REDS

ID: SEI190805 **DOB:** 01/11/2018 **AGE:** 21.0 Mths **REGO STATUS:** REGISTERED
GRADE: PURE BR **HORN:** SCURRED **DNA TEST:** PH

SEI090377 SEIFERT TEDSTAR
 SEI130061 SEIFERT 130061
 SEI080322 SEIFERT 08 0322
SIRE: SEI170097 SEIFERT BELMONT 170097
 KER050345 KER-RON 05-345 (AI)
 SEI120114 SEIFERT 120114

ANIMAL: SEI190805 SEIFERT BELMONT 190805
 MON040011 MONTPELLIER 04-11
 SEI090377 SEIFERT TEDSTAR
 COR030089 CORYMBIA 0089
DAM: SEI140074 SEIFERT 140074
 COR04MS01 MULTIPLE SIRES 2004
 COR040033 CORYMBIA 04-33
 COR010070 CORYMBIA 0070



This deep well-fleshed young bull has the second highest EMA (eye muscle area) EBV in the sale in the top 1% and RBY (retail beef yield) in the top 5%. Combined with SS (scrotal size) in the top 5% and positive rib and rump fat, this puts him in the top 1% on the domestic and export \$indexes. Scrotal Size 37cm in April.

June 2020 Belmont Red GROUP BREEDPLAN

	GL	BW	200	400	600	MC	Milk	SS	DC	CW	EMA	Rib	Rump	RBY	IMF	Domestic	Export
EBV	-1.2	4.9	32	52	72	101	11	3.1	-0.1	50	5	0.3	0.9	1.1	0	\$37	\$43
Acc	33%	60%	69%	70%	66%	65%	45%	71%	42%	58%	56%	58%	57%	46%	52%		

Breed Avg. EBVs for 2018 Born Calves

EBV	-1.1	+2.4	+18	+22	+32	+40	+8	+1.5	-1.7	+24	+2.3	-0.2	+0.4	+0.6	+0.2	+\$20	+\$24
-----	------	------	-----	-----	-----	-----	----	------	------	-----	------	------	------	------	------	-------	-------

Traits Observed: GL, BWT, 200WT, 400WT(x2), 600WT, SS, FAT, EMA, IMF, FLT

Purchaser \$

LOT
30

SEIFERT BELMONT REDS

ID: SEI190575 **DOB:** 13/10/2018 **AGE:** 21.6 Mths **REGO STATUS:** REGISTERED
GRADE: PURE BR **HORN:** POLLED **DNA TEST:** PH

MON040011 MONTPELLIER 04-11
 SEI090377 SEIFERT TEDSTAR
 COR030089 CORYMBIA 0089
SIRE: SEI170089 SEIFERT BELMONT 170089 (AI)
 BEL070211 BELMONT 070211
 SEI140040 SEIFERT 140040
 SEI100078 SEIFERT 0 0078

ANIMAL: SEI190575 SEIFERT BELMONT 190575
 SEI090377 SEIFERT TEDSTAR
 SEI140017 SEIFERT 140017
 SEI080050 SEIFERT STAR ANISE
DAM: SEI160362 SEIFERT BELMONT 160362
 SEI05MS03 2005 BLK MULTI
 SEI070078 SEIFERT 0078
 JIS030209 SEIFERT 3-209



This solid-bodied and calm bull has the best DTC (days to calving) EBV in the sale- in the top 5% at -7.5 days, which puts him in the top 15% on the domestic index. His dam is a proven breeder on her 4th calf in a row. Scrotal Size 35cm in April.

June 2020 Belmont Red GROUP BREEDPLAN

	GL	BW	200	400	600	MC	Milk	SS	DC	CW	EMA	Rib	Rump	RBY	IMF	Domestic	Export
EBV	-1.3	2	16	23	33	47	14	1.2	-7.5	15	0.2	0.2	1.6	-0.1	0.2	\$27	\$32
Acc	37%	61%	71%	71%	74%	68%	44%	72%	41%	59%	55%	59%	58%	46%	52%		

Breed Avg. EBVs for 2018 Born Calves

EBV	-1.1	+2.4	+18	+22	+32	+40	+8	+1.5	-1.7	+24	+2.3	-0.2	+0.4	+0.6	+0.2	+\$20	+\$24
-----	------	------	-----	-----	-----	-----	----	------	------	-----	------	------	------	------	------	-------	-------

Traits Observed: GL, BWT, 200WT, 400WT(x2), 600WT, SS, FAT, EMA, IMF, FLT

Purchaser \$

LOT
31

SEIFERT BELMONT REDS

ID: SEI190027 **DOB:** 26/08/2018 **AGE:** 23.2 Mths **REGO STATUS:** REGISTERED
GRADE: PURE BR **HORN:** SCURRED **DNA TEST:** PH

SEI090377 SEIFERT TEDSTAR
 SEI140269 SEIFERT 140269
 MON040122 MONTPELLIER 0122 (COM)

SIRE: SEI160055 SEIFERT BELMONT'S LIMELIGHT

MON030013 MONTPELLIER 03-13

MON080472 MONTPELLIER 08-472

SEI0000G2 SEIFERT GENERIC BR DAM

ANIMAL: SEI190027 SEIFERT BELMONT'S 190027

SEI13MS01 SEI110155, BEL110089

SEI130097 SEIFERT BELMONT'S 130097

SEI090044 SEIFERT 09-044

DAM: SEI160246 SEIFERT BELMONT'S 160246

MTE010137 MT EUGENE 01-137

COR050002 CORYMBIA 05-02

MTE000644 MT EUGENE 00-0644



A good all-round moderate bull with well-balanced figures across all traits, he is out of a young, hardy dam who is on her 3rd calf in a row. Scrotal Size of 36cm in April.

June 2020 Belmont Red GROUP BREEDPLAN

	GL	BW	200	400	600	MC	Milk	SS	DC	CW	EMA	Rib	Rump	RBY	IMF	Domestic	Export
EBV	-1.7	2.2	22	25	36	41	8	1.7	-0.7	22	1.8	0	0.8	0.5	0.1	\$21	\$24
Acc	57%	75%	73%	73%	76%	70%	41%	72%	37%	61%	56%	60%	58%	45%	52%		

Breed Avg. EBVs for 2018 Born Calves

EBV	-1.1	+2.4	+18	+22	+32	+40	+8	+1.5	-1.7	+24	+2.3	-0.2	+0.4	+0.6	+0.2	+\$20	+\$24
-----	------	------	-----	-----	-----	-----	----	------	------	-----	------	------	------	------	------	-------	-------

Traits Observed: GL, BW, 200WT, 400WT(x2), 600WT, SS, FAT, EMA, IMF, FLT

Purchaser

\$

LOT
32

SEIFERT BELMONT REDS

ID: SEI190213 **DOB:** 25/09/2018 **AGE:** 22.2 Mths **REGO STATUS:** REGISTERED
GRADE: PURE BR **HORN:** POLLED **DNA TEST:** PP

SEI120051 SEIFERT 120051

SEI140171 SEIFERT 140171

SEI080214 SEIFERT 08 0214

SIRE: SEI160023 SEIFERT BELMONT'S 160023

BEL070211 BELMONT 070211

SEI130348 SEIFERT 130348

MON060200 MONTPELLIER 06-2

ANIMAL: SEI190213 SEIFERT BELMONT'S 190213

MON17 MONTPELLIER GENERIC BR SIRE

DAM: MON130576 MONTPELLIER 130576

MON18 MONTPELLIER GENERIC BR DAM



A solid, very quiet, Homozygous Poll with great carcase traits. He is in the top 5% for carcase weight and top 10% for EMA (eye muscle area). His dam is a bought cow who is on her 5th calf in a row. Scrotal Size 38cm in April.

June 2020 Belmont Red GROUP BREEDPLAN

	GL	BW	200	400	600	MC	Milk	SS	DC	CW	EMA	Rib	Rump	RBY	IMF	Domestic	Export
EBV	-1.3	3.8	19	30	35	63	3	1.3	1.6	37	3.9	-0.7	-0.9	1.1	0	\$21	\$20
Acc	25%	58%	71%	71%	74%	68%	43%	71%	35%	58%	53%	56%	55%	42%	49%		

Breed Avg. EBVs for 2018 Born Calves

EBV	-1.1	+2.4	+18	+22	+32	+40	+8	+1.5	-1.7	+24	+2.3	-0.2	+0.4	+0.6	+0.2	+\$20	+\$24
-----	------	------	-----	-----	-----	-----	----	------	------	-----	------	------	------	------	------	-------	-------

Traits Observed: GL, BW, 200WT, 400WT(x2), 600WT, SS, FAT, EMA, IMF, FLT

Purchaser

\$

LOT
33

SEIFERT BELMONT REDS

ID: SEI190201 **DOB:** 24/09/2018 **AGE:** 22.2 Mths **REGO STATUS:** REGISTERED
GRADE: PURE BR **HORN:** SCURRED **DNA TEST:** PH

MON040011 MONTPELLIER 04-11
 SEI090377 SEIFERT TEDSTAR
 COR030089 CORYMBIA 0089

SIRE: SEI170143 SEIFERT BELMONT 170143 (AI)

HAP120304 HAPPY HILL 12 - 304
 SEI140096 SEIFERT 140096
 SEI110200 SEIFERT 110200

ANIMAL: SEI190201 SEIFERT BELMONT 190201

SEI9000G2 GENERIC BELMONT SIRE

DAM: SEI150104 SEIFERT BELMONT 150104

SEI95BRBR SEIFERT GENERIC BR SIRE
 SEI080120X SEIFERT BELMONT 080120X



A soft, docile bull with great carcase traits. He is in the top 10% for EMA (eye muscle area) and top 15% for RBY (retail beef yield). This is combined with solid fertility traits including DTC (days to calving) in the top 35% which places him in the top 10% on the domestic \$index. Scrotal size 41cm in April.

June 2020 Belmont Red GROUP BREEDPLAN

	GL	BW	200	400	600	MC	Milk	SS	DC	CW	EMA	Rib	Rump	RBY	IMF	Domestic	Export
EBV	-1.9	3.3	22	35	44	67	9	1.9	-3.1	34	4	-0.2	0.3	0.9	0	\$31	\$34
Acc	30%	56%	70%	70%	74%	67%	38%	69%	36%	56%	50%	53%	51%	40%	46%		

Breed Avg. EBVs for 2018 Born Calves

EBV	-1.1	+2.4	+18	+22	+32	+40	+8	+1.5	-1.7	+24	+2.3	-0.2	+0.4	+0.6	+0.2	+\$20	+\$24
-----	------	------	-----	-----	-----	-----	----	------	------	-----	------	------	------	------	------	-------	-------

Traits Observed: GL, BWT, 200WT, 400WT(x2), 600WT, SS, FAT, EMA, IMF, FLT

Purchaser \$

LOT
34

SEIFERT BELMONT REDS

ID: SEI190259 **DOB:** 03/10/2018 **AGE:** 21.9 Mths **REGO STATUS:** REGISTERED
GRADE: PURE BR **HORN:** SCURRED **DNA TEST:** NR

SEI110155 SEIFERT 110155
 SEI140287 SEIFERT BELMONT 140287
 MON080462 MONTPELLIER 0462

SIRE: SEI170191 SEIFERT BELMONT 170191

HAP120300 HAPPY HILL 12 - 300
 SEI140128 SEIFERT 140128
 JIS080469 SEIFERT JIS 08-469

ANIMAL: SEI190259 SEIFERT BELMONT 190259

SEI06MS02 06 WS MULTI

DAM: SEI080214 SEIFERT 08 0214

MON980247 MONTPELLIER 98-247 (AI)
 MON020028 MONTPELLIER 02-28
 MON950234 MONTPELLIER 95-234



A very appealing, and deep and high-yielding bull. He has a carcase weight EBV in the top 15% and EMA (eye muscle area) above the top 5% combined with SS (scrotal size) in the top 10%. He is the natural calf of donor cow SEI080214 (a very productive cow raising 7 calves in a row) making him a ½ brother to IVF calf 190103 (lot 62) in the sale. Scrotal Size of 39cm in April.

June 2020 Belmont Red GROUP BREEDPLAN

	GL	BW	200	400	600	MC	Milk	SS	DC	CW	EMA	Rib	Rump	RBY	IMF	Domestic	Export
EBV		3.6	20	29	39	56	5	2.7	0.3	38	4.7	-0.2	-0.1	1.2	0.3	\$24	\$27
Acc	0%	57%	71%	71%	74%	68%	43%	73%	38%	58%	54%	56%	54%	42%	49%		

Breed Avg. EBVs for 2018 Born Calves

EBV	-1.1	+2.4	+18	+22	+32	+40	+8	+1.5	-1.7	+24	+2.3	-0.2	+0.4	+0.6	+0.2	+\$20	+\$24
-----	------	------	-----	-----	-----	-----	----	------	------	-----	------	------	------	------	------	-------	-------

Traits Observed: GL, BWT, 200WT, 400WT(x2), 600WT, SS, FAT, EMA, IMF, FLT

Purchaser \$

Fertility is the biggest profit driver.

Our job is to not only produce great tasting tender beef but also lots of it.

We use the 'days to calving' EBV to select the most profitable cows which fall pregnant early every year.

The EBV graph here shows one of our favourite cows who is in the top 1% for days to calving. She has also raised 9 calves in a row without ever being spike fed, or given any special treatment. She has survived and bred her whole life in our marginal ticky Crows Nest country which is phosphorous deficient, decomposed granite, unimproved spear grass and iron bark, forest county.

Other important fertility traits - including Scrotal Size - in this super-duper cow are also in the top 1%-5%.

Not surprisingly she is at the absolute highest \$value for the domestic index (\$42 versus ave \$20) and export index (\$52 versus ave \$24).

This makes her the equal most profitable cow on the domestic \$index ever. We think so highly of her that we have named her 'Dolly' and cloned her. We will implant 11 clone embryos later this year.

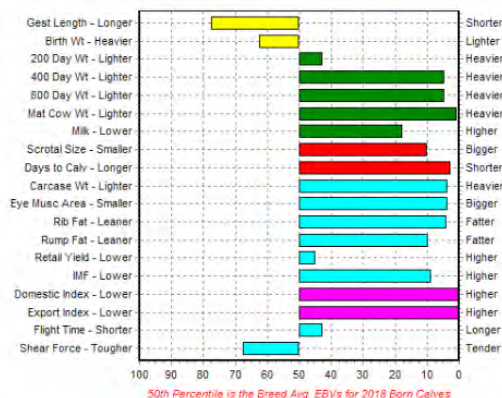
We also select our bulls using days to calving and scrotal size EBVs, and semen test them as yearlings at 11-14mths old for %normal morphology and %normal motility, which means their daughters will reach puberty earlier, and have less lactation anoestrus.

Our females and bulls must be doing a good job, because when we were in the * CASHCOW research project we learnt that our lactating first calf heifers return to calf rate 2009 was 45% better than the project median.

Simplistically this could mean an extra 450 more calves /per year / per 1000 breeders.

(*CASHCOW is the largest research project to date looking at female fertility and included about 75000 females and 72 commercial properties in QLD, NT and WA).

EBV Percentile Graph for SEI090344 SEIFERT BELMONT'S DOLLY



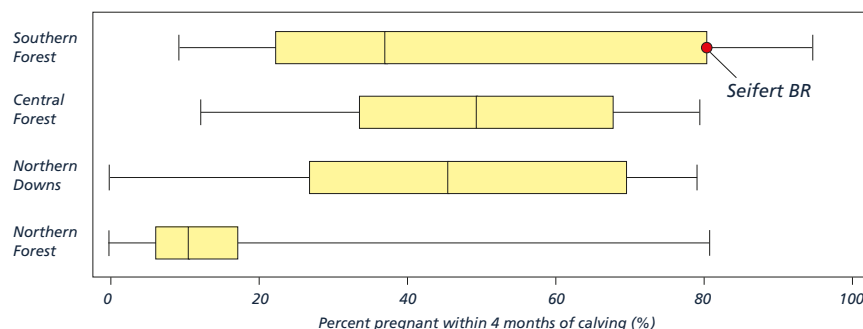
May 2020 Belmont Red BREEDPLAN																	
	Gestation Length (days)	Birth Wt (kg)	200 Day Wt (kg)	400 Day Wt (kg)	600 Day Wt (kg)	Mat Cow Wt (kg)	Milk (kg)	Scrotal Size (cm)	Days to Calving (days)	Carcase Wt (kg)	Eye Muscle Area (sq cm)	Rib Fat (mm)	Rump Fat (mm)	Retail Beef Yield (%)	IMF (%)	Flight Time (secs)	Shear Force (kgs)
EBV	-0.5	+2.8	+19	+36	+55	+100	+11	+2.6	-8.0	+39	+4.4	+0.8	+1.7	+0.6	+0.4	+0.09	+0.08
Acc	45%	75%	82%	83%	82%	81%	75%	72%	57%	71%	55%	62%	60%	52%	55%	64%	33%
Breed Avg. EBVs for 2018 Born Calves Click for Percentiles																	
EBV	-1.1	+2.4	+18	+22	+32	+40	+8	+1.5	-1.7	+24	+2.3	+0.2	+0.4	+0.6	+0.2	+0.03	+0.00

Breed Avg. EBVs for 2018 Born Calves [Click for Percentiles](#)

Traits Observed: 200WT,400WT,MWT,DC

Statistics: Number of Herds: 1, Progeny Analysed: 8, Scan Progeny: 6

SELECTION INDEX VALUES		
Market Target	Index Value	Breed Average
Domestic Index (\$)	-\$ 42	-\$ 20
Export Index (\$)	-\$ 52	-\$ 24



Our performance at 80% return to calf on first calf lactating heifers - we joined for 3 months.

LOT
35

SEIFERT BELMONT REDS

ID: SEI190265 **DOB:** 25/09/2018 **AGE:** 22.2 Mths **REGO STATUS:** REGISTERED
GRADE: PURE BR **HORN:** POLLED **DNA TEST:** PP

BEL070211 BELMONT 070211
 SEI130539 SEIFERT 130539
 JIS030228 SEIFERT 3-228
SIRE: SEI150301 SEIFERT BELMONT 150301
 MON990041 MONTPELLIER 99-41
 MON030002 MONTPELLIER 03-2
 MON980284 MONTPELLIER 98-284
ANIMAL: SEI190265 SEIFERT BELMONT 190265

SEI04MS02 W.S MULTI SIRE

DAM: SEI100154 SEIFERT 0 0154
 MON950253 MONTPELLIER 95-253
 MON010020 MONTPELLIER 01-20
 MON980220 MONTPELLIER 98-220



A very nice Homozygous Poll with a distinctive birth mark on his left side. He is an ideal candidate for heifer joining due to his low birth weight and low MCW (mature cow weight) EBVs. His DTC (days to calving) EBV is in the top 30% which places him in the top 20% on the domestic \$index. He is out of a great cow raising 8 calves in a row and on her 9th. Scrotal Size 38cm in April.

June 2020 Belmont Red GROUP BREEDPLAN

	GL	BW	200	400	600	MC	Milk	SS	DC	CW	EMA	Rib	Rump	RBY	IMF	Domestic	Export
EBV	-1.5	0.7	12	23	26	40	8	1.3	-3.7	15	1.2	0.2	0.9	0.3	0.2	\$26	\$27
Acc	40%	61%	73%	73%	76%	70%	52%	73%	43%	60%	57%	61%	59%	46%	54%		

Breed Avg. EBVs for 2018 Born Calves

EBV	-1.1	+2.4	+18	+22	+32	+40	+8	+1.5	-1.7	+24	+2.3	-0.2	+0.4	+0.6	+0.2	+\$20	+\$24
-----	------	------	-----	-----	-----	-----	----	------	------	-----	------	------	------	------	------	-------	-------

Traits Observed: GL, BWT, 200WT, 400WT(x2), 600WT, SS, FAT, EMA, IMF, FLT

Purchaser \$

LOT
36

SEIFERT BELMONT REDS

ID: SEI190089 **DOB:** 26/09/2018 **AGE:** 22.1 Mths **REGO STATUS:** REGISTERED
GRADE: PURE BR **HORN:** POLLED **DNA TEST:** PH

SEI120051 SEIFERT 120051
 SEI140171 SEIFERT 140171
 SEI080214 SEIFERT 08 0214
SIRE: SEI160023 SEIFERT BELMONT 160023
 BEL070211 BELMONT 070211
 SEI130348 SEIFERT 130348
 MON060200 MONTPELLIER 06-2
ANIMAL: SEI190089 SEIFERT BELMONT 190089

KER100716 KER-RON 10-716

DAM: SEI140198 SEIFERT 140198
 MON030017 MONTPELLIER 03-17
 MON060210 MONTPELLIER 06-18
 SEI0000G1 SEIFERT GENERIC G1



A sleek and solid moderate bull with above average DTC (days to calving) and SS (scrotal size) EBVs are combined with carcass weight and IMF (intramuscular fat) in the top 20%. Scrotal Size of 37cm in April.

June 2020 Belmont Red GROUP BREEDPLAN

	GL	BW	200	400	600	MC	Milk	SS	DC	CW	EMA	Rib	Rump	RBY	IMF	Domestic	Export
EBV	0.4	6.2	19	32	29	54	7	1.9	-1.7	30	2	-0.3	0.1	0.9	0.3	\$18	\$14
Acc	38%	75%	73%	73%	75%	69%	41%	72%	39%	61%	56%	60%	58%	46%	53%		

Breed Avg. EBVs for 2018 Born Calves

EBV	-1.1	+2.4	+18	+22	+32	+40	+8	+1.5	-1.7	+24	+2.3	-0.2	+0.4	+0.6	+0.2	+\$20	+\$24
-----	------	------	-----	-----	-----	-----	----	------	------	-----	------	------	------	------	------	-------	-------

Traits Observed: GL, BWT, 200WT, 400WT(x2), 600WT, SS, FAT, EMA, IMF, FLT

Purchaser \$

LOT
37

SEIFERT BELMONT REDS

ID: SEI190189 **DOB:** 25/09/2018 **AGE:** 22.2 Mths **REGO STATUS:** REGISTERED
GRADE: PURE BR **HORN:** POLLED **DNA TEST:** PH

MON040011 MONTPELLIER 04-11
 SEI090377 SEIFERT TEDSTAR
 COR030089 CORYMBIA 0089

SIRE: SEI170143 SEIFERT BELMONT 170143 (AI)

HAP120304 HAPPY HILL 12 - 304

SEI140096 SEIFERT 140096

SEI110200 SEIFERT 110200

ANIMAL: SEI190189 SEIFERT BELMONT 190189

BEL070211 BELMONT 070211

SEI130539 SEIFERT 130539

JIS030228 SEIFERT 3-228

DAM: SEI150246 SEIFERT 150246

MTE060950 MT EUGENE 06-950

SEI090178 SEIFERT 09 0178SEI

MON050030 MONTPELLIER 05-30



A deep and very quiet, dark red bull with strong growth and carcass weight EBVs. He is in the top 5% for 600D growth and carcass weight, and in the top 15% for RBY (retail beef yield). He is out of a young proven breeder on her 4th calf in a row. Scrotal Size 38cm in April.

June 2020 Belmont Red GROUP BREEDPLAN

	GL	BW	200	400	600	MC	Milk	SS	DC	CW	EMA	Rib	Rump	RBY	IMF	Domestic	Export
EBV	-1.6	4	24	44	60	94	10	1.9	2.2	41	3	-0.5	-0.2	0.9	0.1	\$29	\$32
Acc	35%	58%	71%	71%	74%	68%	42%	71%	38%	58%	53%	55%	53%	43%	49%		

Breed Avg. EBVs for 2018 Born Calves

EBV	-1.1	+2.4	+18	+22	+32	+40	+8	+1.5	-1.7	+24	+2.3	-0.2	+0.4	+0.6	+0.2	+\$20	+\$24
-----	------	------	-----	-----	-----	-----	----	------	------	-----	------	------	------	------	------	-------	-------

Traits Observed: GL, BWT, 200WT, 400WT(x2), 600WT, SS, FAT, EMA, IMF, FLT

Purchaser \$

LOT
38

SEIFERT BELMONT REDS

ID: SEI190373 **DOB:** 16/10/2018 **AGE:** 21.5 Mths **REGO STATUS:** REGISTERED
GRADE: PURE BR **HORN:** SCURRED **DNA TEST:** PH

SEI13MS01 SEI110155, BEL110089
 SEI130097 SEIFERT BELMONT 130097
 SEI090044 SEIFERT 09-044

SIRE: SEI170405 SEIFERT BELMONT 170405

COR04MS01 MULTIPLE SIRES 2004

COR040024 CORYMBIA 04-24

NAR000168 NARAYEN 00/168

ANIMAL: SEI190373 SEIFERT BELMONT 190373

BEL070211 BELMONT 070211

SEI130071 SEIFERT 130071

MON070332 MONTPELLIER 0332

DAM: SEI150006 SEIFERT 150006

SEI100300 SEIFERT 0 0300

SEI120134 SEIFERT 120134

SEI080260 SEIFERT 08 0260SEI



A super quiet, long, dark red bull with great carcass and growth traits being in the top 5% for both 600D growth and carcass weight EBVs placing him in the top 30% on the export \$index. Scrotal Size 39cm in April.

June 2020 Belmont Red GROUP BREEDPLAN

	GL	BW	200	400	600	MC	Milk	SS	DC	CW	EMA	Rib	Rump	RBY	IMF	Domestic	Export
EBV		5.2	30	36	61	75	5		0.4	37	1.3	0.1	1.2	0.4	0.1	\$19	\$28
Acc	0%	56%	70%	70%	73%	67%	42%	70%	35%	57%	52%	54%	53%	41%	47%		

Breed Avg. EBVs for 2018 Born Calves

EBV	-1.1	+2.4	+18	+22	+32	+40	+8	+1.5	-1.7	+24	+2.3	-0.2	+0.4	+0.6	+0.2	+\$20	+\$24
-----	------	------	-----	-----	-----	-----	----	------	------	-----	------	------	------	------	------	-------	-------

Traits Observed: GL, BWT, 200WT, 400WT(x2), 600WT, SS, FAT, EMA, IMF, FLT

Purchaser \$

LOT
39

SEIFERT BELMONT REDS

ID: SEI190221 **DOB:** 10/09/2018 **AGE:** 22.7 Mths **REGO STATUS:** REGISTERED
GRADE: PURE BR **HORN:** SCURRED **DNA TEST:** PH

SEI13MS01 SEI110155, BEL110089
 SEI130097 SEIFERT BELMONT 130097
 SEI090044 SEIFERT 09-044

SIRE: SEI170405 SEIFERT BELMONT 170405

COR04MS01 MULTIPLE SIRE 2004
 COR040024 CORYMBIA 04-24
 NAR000168 NARAYEN 00/168

ANIMAL: SEI190221 SEIFERT BELMONT 190221

HAP070204 HAPPY HILL 07-204 (AI)
 HAP120300 HAPPY HILL 12 - 300
 HAP090251 HAPPY HILL 09-251

DAM: SEI140240 SEIFERT 140240

TRE030179 TREMERE 030179
 BEL080497 BELMONT 080497
 BEL030333 BELMONT 03-0333



Destined to be a great carcase sire. His EMA (eye muscle area) and RBY (retail beef yield) are both in the top 5% and this is combined with above average growth. Scrotal Size 38cm in April.

June 2020 Belmont Red GROUP BREEDPLAN																	
	GL	BW	200	400	600	MC	Milk	SS	DC	CW	EMA	Rib	Rump	RBY	IMF	Domestic	Export
EBV	-0.8	3.5	26	29	44	47	7	1	3.8	36	4.3	-0.6	-1.1	1.2	-0.2	\$17	\$21
Acc	38%	74%	72%	72%	75%	69%	42%	71%	39%	60%	54%	58%	56%	44%	50%		
Breed Avg. EBVs for 2018 Born Calves																	
EBV	-1.1	+2.4	+18	+22	+32	+40	+8	+1.5	-1.7	+24	+2.3	-0.2	+0.4	+0.6	+0.2	+\$20	+\$24

Traits Observed: GL, BWT, 200WT, 400WT(x2), 600WT, SS, FAT, EMA, IMF, FLT

Purchaser

\$



LOT
40

SEIFERT BELMONT REDS

ID: SEI190493 **DOB:** 16/09/2018 **AGE:** 22.5 Mths **REGO STATUS:** REGISTERED
GRADE: PURE BR **HORN:** POLLED **DNA TEST:** PP

BEL070211 BELMONT 070211
 SEI130539 SEIFERT 130539
 JIS030228 SEIFERT 3-228
SIRE: SEI150301 SEIFERT BELMONT 150301
 MON990041 MONTPELLIER 99-41
 MON030002 MONTPELLIER 03-2
 MON980284 MONTPELLIER 98-284
ANIMAL: SEI190493 SEIFERT BELMONT 190493
 SEI13MS01 SEI110155, BEL110089
 SEI130097 SEIFERT BELMONT 130097
 SEI090044 SEIFERT 09-044
DAM: SEI170440 SEIFERT BELMONT 170440
 MON010045 MONTPELLIER 01-45
 SEI070192 SEIFERT 07-192
 MON990088 MONTPELLIER 99-88



This beefy, dark red, Homozygous Poll is in the top 5% for rib fat and top 15% for carcass weight which places him in the top 25% on the export index. Scrotal Size 39cm in April.

June 2020 Belmont Red GROUP BREEDPLAN

	GL	BW	200	400	600	MC	Milk	SS	DC	CW	EMA	Rib	Rump	RBY	IMF	Domestic	Export
EBV	-2	2.8	24	31	48	59	9	1.6	1	33	3.9	0.8	1.6	0.6	0.2	\$24	\$29
Acc	47%	75%	73%	73%	76%	69%	48%	73%	42%	62%	57%	61%	60%	47%	54%		

Breed Avg. EBVs for 2018 Born Calves

EBV	-1.1	+2.4	+18	+22	+32	+40	+8	+1.5	-1.7	+24	+2.3	-0.2	+0.4	+0.6	+0.2	+\$20	+\$24
-----	------	------	-----	-----	-----	-----	----	------	------	-----	------	------	------	------	------	-------	-------

Traits Observed: GL, BWT, 200WT, 400WT(x2), 600WT, SS, FAT, EMA, IMF, FLT

Purchaser

\$

LOT
41

SEIFERT BELMONT REDS

ID: SEI190651 **DOB:** 15/09/2018 **AGE:** 22.5 Mths **REGO STATUS:** REGISTERED
GRADE: PURE BR **HORN:** POLLED **DNA TEST:** PH

BEL070211 BELMONT 070211
 SEI130539 SEIFERT 130539
 JIS030228 SEIFERT 3-228
SIRE: SEI150143 SEIFERT BELMONT 150143
 MON980035 MONTPELLIER 98-035
 MON020060 MONTPELLIER 02-60
 MON990002 MONTPELLIER 99-2
ANIMAL: SEI190651 SEIFERT BELMONT 190651
 SEI090187 SEIFERT 09 0187SEI
 SEI120227 SEIFERT 120227
 SEI080262 SEIFERT 08 0262
DAM: SEI150072 SEIFERT 150072
 SEI070095 SEIFERT 07-0095
 SEI100060 SEIFERT 0 0060
 MON050038 MONTPELLIER 05-038



This extremely quiet bull is beautifully balanced genetically, with most carcass EBVs including IMF (intramuscular fat), EMA (eye muscle area) and carcass weight above the 50th percentile. He has a particularly good SS (scrotal size) EBV in the top 5% and DTC in the top 25% placing him in the top 1% on the export index. He is a bit behind in condition compared to the others after a setback when he got in the wrong paddock for an extended period. He is out of a hardy, fertile yearling mated heifer who is on her 5th calf in a row.

June 2020 Belmont Red GROUP BREEDPLAN

	GL	BW	200	400	600	MC	Milk	SS	DC	CW	EMA	Rib	Rump	RBY	IMF	Domestic	Export
EBV	-0.9	4.9	27	44	68	98	9	3.2	-4.3	45	2.4	-0.6	-0.1	0.6	0.3	\$33	\$43
Acc	28%	58%	72%	72%	75%	68%	46%	72%	42%	59%	56%	61%	59%	46%	54%		

Breed Avg. EBVs for 2018 Born Calves

EBV	-1.1	+2.4	+18	+22	+32	+40	+8	+1.5	-1.7	+24	+2.3	-0.2	+0.4	+0.6	+0.2	+\$20	+\$24
-----	------	------	-----	-----	-----	-----	----	------	------	-----	------	------	------	------	------	-------	-------

Traits Observed: GL, BWT, 200WT, 400WT(x2), 600WT, SS, FAT, EMA, IMF, FLT

Purchaser

\$

LOT
42

SEIFERT BELMONT REDS

ID: SEI190157 **DOB:** 27/09/2018 **AGE:** 22.1 Mths **REGO STATUS:** REGISTERED
GRADE: PURE BR **HORN:** POLLED **DNA TEST:** PP

SEI120051 SEIFERT 120051
 SEI140171 SEIFERT 140171
 SEI080214 SEIFERT 08 0214
SIRE: SEI160023 SEIFERT BELMONT 160023 (IVF)
 BEL070211 BELMONT 070211
 SEI130348 SEIFERT 130348
 MON060200 MONTPELLIER 06-2
ANIMAL: SEI190157 SEIFERT BELMONT 190157

PED00BRBR GENERIC BR SIRE

DAM: SEI090478 SEIFERT BELMONT 090478

PED9500BR GENERIC BR



This chunky, neat, Homozygous Poll is another IVF calf out of one of our favourite cows 'Dulce' who has had 8 calves in a row and is PTIC with her 9th. He is a full brother to 190087 (LOT 48). He has strong fertility traits with his SS (scrotal size) EBV being in the top 20% and DTC (days to calving) in the top 30%. Scrotal Size 39cm in April.

June 2020 Belmont Red GROUP BREEDPLAN

	GL	BW	200	400	600	MC	Milk	SS	DC	CW	EMA	Rib	Rump	RBY	IMF	Domestic	Export
EBV	-1.5	3	20	27	37	56	6	2.3	-3.4	29	2.2	0	1.1	0.4	0.2	\$24	\$28
Acc	27%	54%	58%	59%	58%	56%	42%	53%	30%	47%	40%	43%	42%	33%	38%		

Breed Avg. EBVs for 2018 Born Calves

EBV	-1.1	+2.4	+18	+22	+32	+40	+8	+1.5	-1.7	+24	+2.3	-0.2	+0.4	+0.6	+0.2	+\$20	+\$24
-----	------	------	-----	-----	-----	-----	----	------	------	-----	------	------	------	------	------	-------	-------

Traits Observed: GL, BWT, 200WT, 400WT(x2), 600WT, SS, FAT, EMA, IMF, FLT

Purchaser \$

LOT
43

SEIFERT BELMONT REDS

ID: SEI190799 **DOB:** 25/10/2018 **AGE:** 21.2 Mths **REGO STATUS:** REGISTERED
GRADE: PURE BR **HORN:** POLLED **DNA TEST:** PH

SEI090377 SEIFERT TEDSTAR
 SEI130061 SEIFERT 130061
 SEI080322 SEIFERT 08 0322
SIRE: SEI170097 SEIFERT BELMONT 170097
 KER050345 KER-RON 05-345 (AI)
 SEI120114 SEIFERT 120114
 SEI080050 SEIFERT STAR ANISE
ANIMAL: SEI190799 SEIFERT BELMONT 190799

SEI14MS03 MS1203

DAM: SEI140410 SEIFERT 140410

SEI090068 SEIFERT 09-068



This bull is in the top 5% for EMA (eye muscle area). Plus he has fertility traits of DTC (days to calving) in the top 40%. His rib fat is in the top 40% and 15% respectively. This places him in the top 5% on the export \$index. Scrotal Size 36cm in April.

June 2020 Belmont Red GROUP BREEDPLAN

	GL	BW	200	400	600	MC	Milk	SS	DC	CW	EMA	Rib	Rump	RBY	IMF	Domestic	Export
EBV		2.8	24	31	53	65	9	1.4	-2.8	36	4.3	0.4	1.3	0.6	0	\$29	\$38
Acc	0%	53%	68%	69%	72%	66%	38%	68%	37%	55%	51%	55%	54%	41%	48%		

Breed Avg. EBVs for 2018 Born Calves

EBV	-1.1	+2.4	+18	+22	+32	+40	+8	+1.5	-1.7	+24	+2.3	-0.2	+0.4	+0.6	+0.2	+\$20	+\$24
-----	------	------	-----	-----	-----	-----	----	------	------	-----	------	------	------	------	------	-------	-------

Traits Observed: GL, BWT, 200WT, 400WT(x2), 600WT, SS, FAT, EMA, IMF, FLT

Purchaser \$

LOT
44

SEIFERT BELMONT REDS

ID: SEI190017 **DOB:** 22/08/2018 **AGE:** 23.3 Mths **REGO STATUS:** REGISTERED
GRADE: PURE BR **HORN:** POLLED **DNA TEST:** PP

BEL070211 BELMONT 070211
 SEI130539 SEIFERT 130539
 JIS030228 SEIFERT 3-228
SIRE: SEI150301 SEIFERT BELMONT 150301
 MON990041 MONTPELLIER 99-41
 MON030002 MONTPELLIER 03-2
 MON980284 MONTPELLIER 98-284
ANIMAL: SEI190017 SEIFERT BELMONT 190017
 SEI090377 SEIFERT TEDSTAR
 SEI130061 SEIFERT 130061
 SEI080322 SEIFERT 08 0322
DAM: SEI160108 SEIFERT BELMONT 160108
 MON030017 MONTPELLIER 03-17
 MON070310 MONTPELLIER 0310
 SEI0000G1 SEIFERT GENERIC G1



This very nice, compact, and highly profitable Homozygous Poll bull has it all. He has a very low BW in the top 5% and the second highest DTC at -7 in the top 5%. This is coupled with marbling in the top 10% and EMA (eye muscle area) in the top 25%. With almost the largest testicles in the draft (40cm in April) and a SS EBV in the top 5%, this puts him in the top 5% on the domestic and export \$indexes.

June 2020 Belmont Red GROUP BREEDPLAN

	GL	BW	200	400	600	MC	Milk	SS	DC	CW	EMA	Rib	Rump	RBY	IMF	Domestic	Export
EBV	-2.6	-0.8	14	20	27	38	9	3.1	-7	20	2.8	0.1	0.8	0.5	0.4	\$34	\$38
Acc	59%	75%	74%	74%	76%	70%	48%	73%	41%	62%	57%	61%	59%	47%	54%		

Breed Avg. EBVs for 2018 Born Calves

EBV	-1.1	+2.4	+18	+22	+32	+40	+8	+1.5	-1.7	+24	+2.3	-0.2	+0.4	+0.6	+0.2	+\$20	+\$24
-----	------	------	-----	-----	-----	-----	----	------	------	-----	------	------	------	------	------	-------	-------

Traits Observed: GL, BWT, 200WT, 400WT(x2), 600WT, SS, FAT, EMA, IMF, FLT

Purchaser \$

LOT
45

SEIFERT BELMONT REDS

ID: SEI190015 **DOB:** 25/08/2018 **AGE:** 23.2 Mths **REGO STATUS:** REGISTERED
GRADE: PURE BR **HORN:** SCURRED **DNA TEST:** PH

SEI090377 SEIFERT TEDSTAR
 SEI140269 SEIFERT 140269
 MON040122 MONTPELLIER 0122 (COM)
SIRE: SEI160055 SEIFERT BELMONT 160055
 MON030013 MONTPELLIER 03-13
 MON080472 MONTPELLIER 08-472
 SEI0000G2 SEIFERT GENERIC BR DAM
ANIMAL: SEI190015 SEIFERT BELMONT 190015
 KER100716 KER-RON 10-716
 SEI140279 SEIFERT 140279
 SEI080416 SEIFERT 08-416
DAM: SEI160166 SEIFERT BELMONT 160166
 SEI100300 SEIFERT 0 0300
 SEI130398 SEIFERT 0398 (COM)
 SEI110358 SEIFERT 110358



A very quiet, dark red, moderate bull with low birth weight and favourable low MCW (mature cow weight). Out of a young dam who is PTIC with her 3rd calf in a row. Scrotal Size of 35cm in April.

June 2020 Belmont Red GROUP BREEDPLAN

	GL	BW	200	400	600	MC	Milk	SS	DC	CW	EMA	Rib	Rump	RBY	IMF	Domestic	Export
EBV	-2.5	1.1	18	22	27	33	9	1.4	-0.3	19	2	-0.2	0.1	0.6	0.2	\$21	\$21
Acc	57%	75%	73%	73%	76%	70%	40%	72%	37%	62%	57%	61%	59%	46%	53%		

Breed Avg. EBVs for 2018 Born Calves

EBV	-1.1	+2.4	+18	+22	+32	+40	+8	+1.5	-1.7	+24	+2.3	-0.2	+0.4	+0.6	+0.2	+\$20	+\$24
-----	------	------	-----	-----	-----	-----	----	------	------	-----	------	------	------	------	------	-------	-------

Traits Observed: GL, BWT, 200WT, 400WT(x2), 600WT, SS, FAT, EMA, IMF, FLT

Purchaser \$

LOT
46

SEIFERT BELMONT REDS

ID: SEI190023 **DOB:** 28/08/2018 **AGE:** 23.1 Mths **REGO STATUS:** REGISTERED
GRADE: PURE BR **HORN:** POLLED **DNA TEST:** PH

SEI090377 SEIFERT TEDSTAR
 SEI140269 SEIFERT 140269
 MON040122 MONTPELLIER 0122 (COM)
SIRE: SEI160055 SEIFERT BELMONT'S LIMELIGHT
 MON030013 MONTPELLIER 03-13
 MON080472 MONTPELLIER 08-472
 SEI0000G2 SEIFERT GENERIC BR DAM
ANIMAL: SEI190023 SEIFERT BELMONT'S 190023
 SEI090377 SEIFERT TEDSTAR
 SEI130061 SEIFERT 130061
 SEI080322 SEIFERT 08 0322
DAM: SEI160240 SEIFERT BELMONT'S 160240
 SEI06MS02 06 WS MULTI
 SEI080416 SEIFERT 08-416
 MON050004 MONTPELLIER 05-4



This long, sleek, and solid bull is the highest marbling (IMF) bull in the sale, being in the top 5%. He has an immaculate temperament and a low BW EBV, but moderate growth combined with above average DTC (days to calving) and SS (scrotal) EBVs which puts him in the top 15% on the domestic \$index. Out of a young dam on her 3rd calf in a row. Scrotal Size of 39cm in April.

June 2020 Belmont Red GROUP BREEDPLAN

	GL	BW	200	400	600	MC	Milk	SS	DC	CW	EMA	Rib	Rump	RBY	IMF	Domestic	Export
EBV	-1.2	1	16	26	33	44	10	2.6	-3.2	23	2.5	0.3	1.3	0.4	0.5	\$28	\$30
Acc	59%	76%	74%	74%	77%	71%	43%	73%	40%	63%	58%	61%	60%	48%	55%		

Breed Avg. EBVs for 2018 Born Calves

EBV	-1.1	+2.4	+18	+22	+32	+40	+8	+1.5	-1.7	+24	+2.3	-0.2	+0.4	+0.6	+0.2	+\$20	+\$24
-----	------	------	-----	-----	-----	-----	----	------	------	-----	------	------	------	------	------	-------	-------

Traits Observed: GL, BWT, 200WT, 400WT(x2), 600WT, SS, FAT, EMA, IMF, FLT

Purchaser \$

LOT
47

SEIFERT BELMONT REDS

ID: SEI190053 **DOB:** 16/09/2018 **AGE:** 22.5 Mths **REGO STATUS:** REGISTERED
GRADE: PURE BR **HORN:** POLLED **DNA TEST:** PH

SAAG91130 AG 91-130 (BONS.) (IMP Sth AF)
 ISAGRC9714 GRC9714 (P) (IMP STH AF) (ET)
 SAIVYN142 IVY N 142 (BONS.) (IMP Sth AF)
SIRE: VAL01B808 VALINOR B808 (IVF)
 VAL91V655 VALINOR 655
 VAL96V182 VALINOR 96-V182 (B)
 BAN870N55 BANGALLA 87-N55
ANIMAL: SEI190053 SEIFERT BELMONT'S 190053
 TRE010765 TREMERE 010765
 TRE050123 TREMERE 050123
 TRE930480 TREMERE 93-480
DAM: SEI080012 SEIFERT BELMONT'S 08 0012
 MON980035 MONTPELLIER 98-035
 MON020014 MONTPELLIER 02-14
 MON930272 MONTPELLIER 93-272



A long and low IVF calf, by outside sire VAL01B808, and out of a great cow that produced 8/8 calves in a row before being retired for artificial breeding. This bull is in the top 25% on the export \$index. Scrotal Size 39cm in April.

June 2020 Belmont Red GROUP BREEDPLAN

	GL	BW	200	400	600	MC	Milk	SS	DC	CW	EMA	Rib	Rump	RBY	IMF	Domestic	Export
EBV	-0.9	2.8	24	27	48	53	4	1.2	0.1	27	2.4	-0.3	-0.2	0.7	0.1	\$20	\$29
Acc	45%	74%	65%	64%	64%	62%	51%	54%	39%	58%	43%	47%	46%	39%	41%		

Breed Avg. EBVs for 2018 Born Calves

EBV	-1.1	+2.4	+18	+22	+32	+40	+8	+1.5	-1.7	+24	+2.3	-0.2	+0.4	+0.6	+0.2	+\$20	+\$24
-----	------	------	-----	-----	-----	-----	----	------	------	-----	------	------	------	------	------	-------	-------

Traits Observed: GL, BWT, 200WT, 400WT(x2), 600WT, SS, FAT, EMA, IMF, FLT

Purchaser \$

LOT
48

SEIFERT BELMONT REDS

ID: SEI190087 **DOB:** 23/09/2018 **AGE:** 22.2 Mths **REGO STATUS:** REGISTERED
GRADE: PURE BR **HORN:** POLLED **DNA TEST:** PH

SEI120051 SEIFERT 120051
 SEI140171 SEIFERT 140171
 SEI080214 SEIFERT 08 0214
SIRE: SEI160023 SEIFERT BELMONT 160023 (IVF)
 BEL070211 BELMONT 070211
 SEI130348 SEIFERT 130348
 MON060200 MONTPELLIER 06-2
ANIMAL: SEI190087 SEIFERT BELMONT 190087

PED00BRBR GENERIC BR SIRE

DAM: SEI090478 SEIFERT BELMONT 090478

PED9500BR GENERIC BR



This muscular, clean coated, bull has a great top line. He ranks in the top 15% for SS (scrotal size) and top 20% for DTC (days to calving) and is in the top 25% on the export \$index. We rarely name cows, but his dam is such a personality and an exceptional breeder that we called her 'Dulce' (SEI090478). Dulce has had 8\8 calves in a row and is PTIC with her 9th. Scrotal Size 40cm in April.

June 2020 Belmont Red GROUP BREEDPLAN

	GL	BW	200	400	600	MC	Milk	SS	DC	CW	EMA	Rib	Rump	RBV	IMF	Domestic	Export
EBV	-1.3	3.1	20	24	38	56	6	2.5	-4.7	27	1.6	0.2	1.7	0.2	0.4	\$23	\$30
Acc	37%	74%	72%	72%	74%	69%	42%	71%	35%	59%	53%	56%	54%	42%	49%		

Breed Avg. EBVs for 2018 Born Calves

EBV	-1.1	+2.4	+18	+22	+32	+40	+8	+1.5	-1.7	+24	+2.3	-0.2	+0.4	+0.6	+0.2	+\$20	+\$24
-----	------	------	-----	-----	-----	-----	----	------	------	-----	------	------	------	------	------	-------	-------

Traits Observed: GL, BWT, 200WT, 400WT(x2), 600WT, SS, FAT, EMA, IMF, FLT

Purchaser \$

LOT
49

SEIFERT BELMONT REDS

ID: SEI190523 **DOB:** 29/09/2018 **AGE:** 22.0 Mths **REGO STATUS:** REGISTERED
GRADE: PURE BR **HORN:** POLLED **DNA TEST:** PH

SEI090377 SEIFERT TEDSTAR
 SEI140269 SEIFERT 140269
 MON040122 MONTPELLIER 0122 (COM)
SIRE: SEI160055 SEIFERT BELMONT LIMELIGHT
 MON030013 MONTPELLIER 03-13
 MON080472 MONTPELLIER 08-472
 SEI0000G2 SEIFERT GENERIC BR DAM
ANIMAL: SEI190523 SEIFERT BELMONT 190523
 SEI130539 SEIFERT 130539
 SEI150291 SEIFERT BELMONT 150291
 MON020014 MONTPELLIER 02-14
DAM: SEI170220 SEIFERT BELMONT 170220
 SEI070095 SEIFERT 07-0095
 SEI120010 SEIFERT 120010
 SEI090476 SEIFERT 09-476



A very quiet and versatile, dark-red bull, with favourable low BW but above average growth, he is also in the top 20% for DTC (days to calving) and above the top 10% for SS (scrotal size), with rib fat in the top 25% and marbling in the top 20%, which positions him in the top 5% on the domestic \$index. He is out of a yearling mated heifer now on her 3rd calf in a row. Scrotal Size 38cm in April.

June 2020 Belmont Red GROUP BREEDPLAN

	GL	BW	200	400	600	MC	Milk	SS	DC	CW	EMA	Rib	Rump	RBV	IMF	Domestic	Export
EBV	-2.2	0.9	21	29	40	54	11	2.9	-4.5	26	2.3	0.2	1.1	0.5	0.3	\$33	\$37
Acc	44%	75%	72%	72%	76%	69%	40%	72%	39%	61%	56%	60%	59%	46%	53%		

Breed Avg. EBVs for 2018 Born Calves

EBV	-1.1	+2.4	+18	+22	+32	+40	+8	+1.5	-1.7	+24	+2.3	-0.2	+0.4	+0.6	+0.2	+\$20	+\$24
-----	------	------	-----	-----	-----	-----	----	------	------	-----	------	------	------	------	------	-------	-------

Traits Observed: GL, BWT, 200WT, 400WT(x2), 600WT, SS, FAT, EMA, IMF, FLT

Purchaser \$

LOT
50

SEIFERT BELMONT REDS

ID: SEI190545	DOB: 26/08/2018	AGE: 23.2 Mths	REGO STATUS: REGISTERED
GRADE: PURE BR	HORN: POLLED	DNA TEST:	PH

BEL070211 BELMONT 070211
 SEI130539 SEIFERT 130539
 JIS030228 SEIFERT 3-228
SIRE: SEI150143 SEIFERT BELMONT 150143
 MON980035 MONTPELLIER 98-035
 MON020060 MONTPELLIER 02-60
 MON990002 MONTPELLIER 99-2
ANIMAL: SEI190545 SEIFERT BELMONT 190545
 SEI080165 SEIFERT ACHIEVABULL
 SEIFERT 120249
 MON050004 MONTPELLIER 05-4
DAM: SEIFERT 160386



This neat, docile bull has great EBVs with SS (scrotal size) in the top 5% and DTC (days to calving) in the top 25%, plus above average growth and high marbling in the top 10%. This places him in the top 15% on the domestic index. Scrotal Size 40cm in April.

June 2020 Belmont Red GROUP BREEDPLAN																	
	GL	BW	200	400	600	MC	Milk	SS	DC	CW	EMA	Rib	Rump	RBY	IMF	Domestic	Export
EBV	-0.8	3.1	17	31	41	65	7	3.2	-4.2	24	1.3	0	1.1	0.3	0.4	\$27	\$31
Acc	27%	57%	71%	71%	75%	68%	45%	72%	40%	59%	56%	61%	59%	45%	53%		
Breed Avg. EBVs for 2018 Born Calves																	
EBV	-1.1	+2.4	+18	+22	+32	+40	+8	+1.5	-1.7	+24	+2.3	-0.2	+0.4	+0.6	+0.2	+\$20	+\$24

Traits Observed: GL, BWT, 200WT, 400WT(x2), 600WT, SS, FAT, EMA, IMF, FLT

Purchaser \$



LOT
51

SEIFERT BELMONT REDS

ID: SEI190271 **DOB:** 03/10/2018 **AGE:** 21.9 Mths **REGO STATUS:** REGISTERED
GRADE: PURE BR **HORN:** POLLED **DNA TEST:** PP

SEI120051 SEIFERT 120051
 SEI140171 SEIFERT 140171
 SEI080214 SEIFERT 08 0214
SIRE: SEI160023 SEIFERT BELMONT 160023
 BEL070211 BELMONT 070211
 SEI130348 SEIFERT 130348
 MON060200 MONTPELLIER 06-2
ANIMAL: SEI190271 SEIFERT BELMONT 190271
 IUS1100331 PRR 840 (IMP USA) (ET)
 KER050345 KER-RON 05-345 (AI)
 NAR960275 NARAYEN 96/275
DAM: SEI120048 SEIFERT 120048
 MON010045 MONTPELLIER 01-45
 MON050054 MONTPELLIER 05-54
 MON930110 MONTPELLIER 93-110



A very well built, moderate, light red and quiet Homozygous Poll with an EMA (eye muscle area) EBV in the top 35% and RBY (retail beef yield) in the top 20%. His dam has had 6/6 calves in a row and is PTIC with the 7th.

June 2020 Belmont Red GROUP BREEDPLAN

	GL	BW	200	400	600	MC	Milk	SS	DC	CW	EMA	Rib	Rump	RBY	IMF	Domestic	Export
EBV	0.1	3.2	12	20	22	41	5	0.6	-0.4	23	2.7	-0.3	-0.4	0.8	0	\$17	\$16
Acc	30%	60%	72%	73%	76%	69%	44%	73%	41%	60%	56%	60%	59%	46%	53%		

Breed Avg. EBVs for 2018 Born Calves

EBV	-1.1	+2.4	+18	+22	+32	+40	+8	+1.5	-1.7	+24	+2.3	-0.2	+0.4	+0.6	+0.2	+\$20	+\$24
-----	------	------	-----	-----	-----	-----	----	------	------	-----	------	------	------	------	------	-------	-------

Traits Observed: GL, BWT, 200WT, 400WT(x2), 600WT, SS, FAT, EMA, IMF, FLT

Purchaser \$

LOT
52

SEIFERT BELMONT REDS

ID: SEI190329 **DOB:** 30/10/2018 **AGE:** 21.0 Mths **REGO STATUS:** REGISTERED
GRADE: PURE BR **HORN:** SCURRED **DNA TEST:** PH

SEI090377 SEIFERT TEDSTAR
 SEI130061 SEIFERT 130061
 SEI080322 SEIFERT 08 0322
SIRE: SEI170107 SEIFERT BELMONT 170107
 SEI04MS02 W.S MULTI SIRE
 SEI100156 SEIFERT 0 0156
 COR040041 CORYMBIA 04-41
ANIMAL: SEI190329 SEIFERT BELMONT 190329
 TRE010765 TREMERE 010765
 TRE070059 TREMERE 07-59
 TRE010950 TREMERE 010950
DAM: SEI120290 SEIFERT 120290
 MON000043 MONTPELLIER 00-43
 SEI060020 SEIFERT 06-020
 MON990028 MONTPELLIER 99-28



An attractive, dark pigmented and docile bull. He has low BW (birthweight) and is in the top 10% for DTC (days to calving) and top 20% for SS (scrotal size) with favourable low MCW (mature cow weight). He is out of a proven breeder on her 7th calf in a row. Scrotal Size 38cm in April.

June 2020 Belmont Red GROUP BREEDPLAN

	GL	BW	200	400	600	MC	Milk	SS	DC	CW	EMA	Rib	Rump	RBY	IMF	Domestic	Export
EBV	-0.7	1.4	13	20	20	33	7	2.2	-6.3	17	1.6	-0.4	0	0.5	0.3	\$26	\$27
Acc	27%	57%	68%	70%	72%	67%	45%	70%	42%	58%	54%	58%	56%	44%	51%		

Breed Avg. EBVs for 2018 Born Calves

EBV	-1.1	+2.4	+18	+22	+32	+40	+8	+1.5	-1.7	+24	+2.3	-0.2	+0.4	+0.6	+0.2	+\$20	+\$24
-----	------	------	-----	-----	-----	-----	----	------	------	-----	------	------	------	------	------	-------	-------

Traits Observed: GL, BWT, 200WT, 400WT(x2), 600WT, SS, FAT, EMA, IMF, FLT

Purchaser \$

LOT
53

SEIFERT BELMONT REDS

ID: SEI190239 **DOB:** 13/10/2018 **AGE:** 21.6 Mths **REGO STATUS:** REGISTERED
GRADE: PURE BR **HORN:** POLLED **DNA TEST:** PH

SEI120051 SEIFERT 120051
 SEI140171 SEIFERT 140171
 SEI080214 SEIFERT 08 0214
SIRE: SEI160023 SEIFERT BELMONT 160023
 BEL070211 BELMONT 070211
 SEI130348 SEIFERT 130348
 MON060200 MONTPELLIER 06-2
ANIMAL: SEI190239 SEIFERT BELMONT 190239
 MTE020525 MT EUGENE 02-0525 (AI)
 MTE060086 MT EUGENE 06-86
 MTE000113 MT EUGENE 00-113 (AI)
DAM: BEL120110 BELMONT 120110
 MTE920982 MT EUGENE 92-982
 BEL010401 BELMONT 01-0401
 BEL950756 BELMONT 95-756



A chunky bull with a great top line, he has a great combination of fertility and carcase traits. He is in the top 25%-40% for SS (scrotal size) and DTC (days to calving) respectively and is in the top 5% for RBY (retail beef yield) and top 15% for carcase weight. He is out of a good CSIRO cow who is on her 7th calf in a row. Scrotal size 38cm in April.

June 2020 Belmont Red GROUP BREEDPLAN

	GL	BW	200	400	600	MC	Milk	SS	DC	CW	EMA	Rib	Rump	RBY	IMF	Domestic	Export
EBV	-0.3	3.9	19	24	35	52	6	1.9	-2.3	32	3.1	-0.9	-1.1	1.1	0.2	\$22	\$26
Acc	34%	63%	72%	72%	76%	69%	44%	73%	38%	60%	56%	60%	58%	45%	52%		

Breed Avg. EBVs for 2018 Born Calves

EBV	-1.1	+2.4	+18	+22	+32	+40	+8	+1.5	-1.7	+24	+2.3	-0.2	+0.4	+0.6	+0.2	+\$20	+\$24
-----	------	------	-----	-----	-----	-----	----	------	------	-----	------	------	------	------	------	-------	-------

Traits Observed: GL, BWT, 200WT, 400WT(x2), 600WT, SS, FAT, EMA, IMF, FLT

Purchaser \$

LOT
54

SEIFERT BELMONT REDS

ID: SEI190033 **DOB:** 06/09/2018 **AGE:** 22.8 Mths **REGO STATUS:** REGISTERED
GRADE: PURE BR **HORN:** SCURRED **DNA TEST:** PH

SEI090377 SEIFERT TEDSTAR
 SEI130061 SEIFERT 130061
 SEI080322 SEIFERT 08 0322
SIRE: SEI170103 SEIFERT BELMONT 170103
 SEI050065 SEIFERT 05-65
 SEI080120 SEIFERT BELMONT 08 0120
 MON030014 MONTPELLIER 03-14
ANIMAL: SEI190033 SEIFERT BELMONT 190033
 SEI090377 SEIFERT TEDSTAR
 SEI130115 SEIFERT 130115
 MON040024 MONTPELLIER 04-24
DAM: SEI160320 SEIFERT BELMONT 160320
 JIS00SEBR SEIFERT JIS GENERIC SEBR
 JIS080638 SEIFERT JIS 08-638
 JIS0000DM SEIFERT JIS GENERIC DM



A solid, smooth, well-balanced bull with excellent temperament and fertility traits. His SS (scrotal size) is in the top 15% and DTC (days to calving) is in the top 25%. He has positive fats with rib fat in the top 30% and IMF (intramuscular fat) in the top 10%. His young dam is proven being on her 3rd calf in a row. Scrotal Size 38cm in April.

June 2020 Belmont Red GROUP BREEDPLAN

	GL	BW	200	400	600	MC	Milk	SS	DC	CW	EMA	Rib	Rump	RBY	IMF	Domestic	Export
EBV	-0.8	2.3	18	25	38	49	7	2.5	-4.3	26	2.2	0.1	1.2	0.4	0.4	\$26	\$32
Acc	41%	75%	72%	71%	75%	69%	42%	71%	38%	60%	54%	57%	55%	43%	49%		

Breed Avg. EBVs for 2018 Born Calves

EBV	-1.1	+2.4	+18	+22	+32	+40	+8	+1.5	-1.7	+24	+2.3	-0.2	+0.4	+0.6	+0.2	+\$20	+\$24
-----	------	------	-----	-----	-----	-----	----	------	------	-----	------	------	------	------	------	-------	-------

Traits Observed: GL, BWT, 200WT, 400WT(x2), 600WT, SS, FAT, EMA, IMF, FLT

Purchaser \$

LOT
55

SEIFERT BELMONT REDS

ID: SEI190085 **DOB:** 24/09/2018 **AGE:** 22.2 Mths **REGO STATUS:** REGISTERED
GRADE: PURE BR **HORN:** POLLED **DNA TEST:** PH

SAAG91130 AG 91-130 (BONS.) (IMP Sth AF)
 ISAGRC9714 GRC9714 (P) (IMP STH AF) (ET)
 SAIVYN142 IVY N 142 (BONS.) (IMP Sth AF)

SIRE: VAL01B808 VALINOR B808 (IVF)

VAL91V655 VALINOR 655

VAL96V182 VALINOR 96-V182 (B)

BAN870N55 BANGALLA 87-N55

ANIMAL: SEI190085 SEIFERT BELMONT 190085

SEI090377 SEIFERT TEDSTAR

SEI130061 SEIFERT 130061

SEI080322 SEIFERT 08 0322

DAM: SEI170150 SEIFERT BELMONT 170150

BEL070211 BELMONT 070211

SEI130104 SEIFERT 130104

SEI080306 SEIFERT 08 0306



A long, neat IVF calf by outside sire VAL01B808, he is in the top 10% on the export \$index. He is out of a fertile yearling mated heifer who is on her 3rd calf in a row. Scrotal Size 38cm in April.

June 2020 Belmont Red GROUP BREEDPLAN

	GL	BW	200	400	600	MC	Milk	SS	DC	CW	EMA	Rib	Rump	RBV	IMF	Domestic	Export
EBV	-1.4	3	28	31	54	61	7	1.9	-1	36	4	-0.5	-1	1.1	0	\$27	\$36
Acc	47%	74%	66%	67%	65%	62%	45%	64%	35%	57%	43%	49%	48%	40%	43%		

Breed Avg. EBVs for 2018 Born Calves

EBV	-1.1	+2.4	+18	+22	+32	+40	+8	+1.5	-1.7	+24	+2.3	-0.2	+0.4	+0.6	+0.2	+\$20	+\$24
-----	------	------	-----	-----	-----	-----	----	------	------	-----	------	------	------	------	------	-------	-------

Traits Observed: GL, BWT, 200WT, 400WT(x2), 600WT, SS, FAT, EMA, IMF, FLT

Purchaser \$

LOT
56

SEIFERT BELMONT REDS

ID: SEI190479 **DOB:** 09/09/2018 **AGE:** 22.7 Mths **REGO STATUS:** REGISTERED
GRADE: PURE BR **HORN:** POLLED **DNA TEST:** PH

SEI090377 SEIFERT TEDSTAR
 SEI140269 SEIFERT 140269
 MON040122 MONTPELLIER 0122 (COM)

SIRE: SEI160055 SEIFERT BELMONT LIMELIGHT

MON030013 MONTPELLIER 03-13

MON080472 MONTPELLIER 08-472

SEI0000G2 SEIFERT GENERIC BR DAM

ANIMAL: SEI190479 SEIFERT BELMONT 190479

SEI110155 SEIFERT 110155

SEI140287 SEIFERT BELMONT 140287

MON080462 MONTPELLIER 0462

DAM: SEI170206 SEIFERT BELMONT 170206

HAP110283 HAPPY HILL 11-283 (AI)

SEI140372 SEIFERT 140372

SEI080130 SEIFERT 0130



A calm, above-average bull, he is in the top 5% for SS (scrotal size) and 20% for both 600D growth and carcass weight positions him in the top 30% in both the domestic and export \$indexes. Scrotal Size 38cm in April.

June 2020 Belmont Red GROUP BREEDPLAN

	GL	BW	200	400	600	MC	Milk	SS	DC	CW	EMA	Rib	Rump	RBV	IMF	Domestic	Export
EBV	-1.6	2.2	25	29	44	54	8	3	0.8	31	2.8	0.1	0.9	0.7	0.2	\$24	\$28
Acc	38%	59%	71%	71%	75%	67%	38%	72%	37%	58%	56%	60%	59%	45%	53%		

Breed Avg. EBVs for 2018 Born Calves

EBV	-1.1	+2.4	+18	+22	+32	+40	+8	+1.5	-1.7	+24	+2.3	-0.2	+0.4	+0.6	+0.2	+\$20	+\$24
-----	------	------	-----	-----	-----	-----	----	------	------	-----	------	------	------	------	------	-------	-------

Traits Observed: GL, BWT, 200WT, 400WT(x2), 600WT, SS, FAT, EMA, IMF, FLT

Purchaser \$

LOT
57

SEIFERT BELMONT REDS

ID: SEI190307 **DOB:** 31/10/2018 **AGE:** 21.0 Mths **REGO STATUS:** REGISTERED
GRADE: PURE BR **HORN:** POLLED **DNA TEST:** PH

SEI090377 SEIFERT TEDSTAR
 SEI130061 SEIFERT 130061
 SEI080322 SEIFERT 08 0322

SIRE: SEI170105 SEIFERT BELMONT 170105

TRE070059 TREMERE 07-59

SEI120184 SEIFERT 120184

JIS030168 SEIFERT 3-168

ANIMAL: SEI190307 SEIFERT BELMONT 190307

TRE000303 TREMERE 000303

TRE050155 TREMERE 050155

TRE980446 TREMERE 98-446

DAM: BEL090113 BELMONT 090113

ALS951451 ALEXANDRIA STATION 1451

BEL010180 BELMONT 01-0180

BEL900429 BELMONT 90-429



A handy heifer bull with an extremely low BW EBV; he will be perfect for yearling mating. He is also in the top 25% for DTC (days to calving) which combined with other well-balanced traits, places him in the top 15% on the domestic and export \$indexes. He is out of a CSIRO cow who had 6 calves in a row. Scrotal Size 38cm in April.

June 2020 Belmont Red GROUP BREEDPLAN

	GL	BW	200	400	600	MC	Milk	SS	DC	CW	EMA	Rib	Rump	RBY	IMF	Domestic	Export
EBV	-2.2	-1.8	11	19	28	30	7	1.3	-4.2	17	2.3	0.2	0.8	0.2	0.3	\$28	\$33
Acc	42%	74%	72%	72%	74%	69%	47%	71%	38%	61%	54%	55%	53%	44%	48%		

Breed Avg. EBVs for 2018 Born Calves

EBV	-1.1	+2.4	+18	+22	+32	+40	+8	+1.5	-1.7	+24	+2.3	-0.2	+0.4	+0.6	+0.2	+\$20	+\$24
-----	------	------	-----	-----	-----	-----	----	------	------	-----	------	------	------	------	------	-------	-------

Traits Observed: GL, BWT, 200WT, 400WT(x2), 600WT, SS, FAT, EMA, IMF, FLT

Purchaser

\$

LOT
58

SEIFERT BELMONT REDS

ID: SEI190501 **DOB:** 20/09/2018 **AGE:** 22.3 Mths **REGO STATUS:** REGISTERED
GRADE: PURE BR **HORN:** SCURRED **DNA TEST:** PH

SEI090377 SEIFERT TEDSTAR
 SEI130061 SEIFERT 130061
 SEI080322 SEIFERT 08 0322

SIRE: SEI170267 SEIFERT BELMONT 170267

TRE080023 TREMERE 080023

BEL120213 BELMONT 120213

BEL080074 BELMONT 080074 (COM)

ANIMAL: SEI190501 SEIFERT BELMONT 190501

SEI130539 SEIFERT 130539

SEI150301 SEIFERT BELMONT 150301

MON030002 MONTPELLIER 03-2

DAM: SEI170158 SEIFERT BELMONT 170158

MON000043 MONTPELLIER 00-43

SEI060020 SEIFERT 06-020

MON990028 MONTPELLIER 99-28



This very solid and appealing bull is a curve bender being in the top 1% for low BW but in the top 10% for 600D growth. He is also in the top 20% for DTC (days to calving) placing him in the top 1% in the export \$index. Scrotal Size 36cm in April.

June 2020 Belmont Red GROUP BREEDPLAN

	GL	BW	200	400	600	MC	Milk	SS	DC	CW	EMA	Rib	Rump	RBY	IMF	Domestic	Export
EBV	-3.3	-1.3	23	27	52	57	9	1	-4.9	26	1.7	-0.9	-1.1	0.5	-0.2	\$35	\$47
Acc	43%	75%	72%	72%	73%	67%	42%	71%	39%	60%	55%	58%	56%	45%	51%		

Breed Avg. EBVs for 2018 Born Calves

EBV	-1.1	+2.4	+18	+22	+32	+40	+8	+1.5	-1.7	+24	+2.3	-0.2	+0.4	+0.6	+0.2	+\$20	+\$24
-----	------	------	-----	-----	-----	-----	----	------	------	-----	------	------	------	------	------	-------	-------

Traits Observed: GL, BWT, 200WT, 400WT(x2), 600WT, SS, FAT, EMA, IMF, FLT

Purchaser

\$

LOT
59

SEIFERT BELMONT REDS

ID: SEI190169 **DOB:** 08/10/2018 **AGE:** 21.7 Mths **REGO STATUS:** REGISTERED
GRADE: PURE BR **HORN:** SCURRED **DNA TEST:** PH

SEI110155 SEIFERT 110155
 SEI140287 SEIFERT BELMONT 140287
 MON080462 MONTPELLIER 0462

SIRE: SEI170191 SEIFERT BELMONT 170191
 HAP120300 HAPPY HILL 12 - 300

SEI140128 SEIFERT 140128
 JIS080469 SEIFERT JIS 08-469

ANIMAL: SEI190169 SEIFERT BELMONT 190169

SEI06MS01 06 OAK

SEI090187 SEIFERT 09 0187SEI
 MON050012 MONTPELLIER 05-12

DAM: SEI120188 SEIFERT 120188

MON000003 MONTPELLIER 00-3

SEI060058 SEIFERT 06-058

JIS030221 SEIFERT 3-221



A light-red, moderate bull with nice lines, he has a favourable low mature cow weight EBV combined with solid fertility traits in the top 30% for SS (scrotal size) and DTC (days to calving). He is out of a proven breeder on her 7th calf in a row. Scrotal Size 35cm in April.

June 2020 Belmont Red GROUP BREEDPLAN

	GL	BW	200	400	600	MC	Milk	SS	DC	CW	EMA	Rib	Rump	RBY	IMF	Domestic	Export
EBV		3.2	14	17	19	27	9	1.9	-3.4	19	2.5	0.9	2.3	0.4	0.4	\$17	\$18
Acc	0%	58%	71%	71%	74%	68%	43%	72%	39%	59%	54%	57%	55%	43%	50%		

Breed Avg. EBVs for 2018 Born Calves

EBV	-1.1	+2.4	+18	+22	+32	+40	+8	+1.5	-1.7	+24	+2.3	-0.2	+0.4	+0.6	+0.2	+\$20	+\$24
-----	------	------	-----	-----	-----	-----	----	------	------	-----	------	------	------	------	------	-------	-------

Traits Observed: GL, BWT, 200WT, 400WT(x2), 600WT, SS, FAT, EMA, IMF, FLT

Purchaser \$

LOT
60

SEIFERT BELMONT REDS

ID: SEI190031 **DOB:** 01/09/2018 **AGE:** 23.0 Mths **REGO STATUS:** REGISTERED
GRADE: PURE BR **HORN:** POLLED **DNA TEST:** PP

SEI120051 SEIFERT 120051

SEI140171 SEIFERT 140171

SEI080214 SEIFERT 08 0214

SIRE: SEI160023 SEIFERT BELMONT 160023

BEL070211 BELMONT 070211

SEI130348 SEIFERT 130348

MON060200 MONTPELLIER 06-2

ANIMAL: SEI190031 SEIFERT BELMONT 190031

KER100716 KER-RON 10-716

SEI140279 SEIFERT 140279

SEI080416 SEIFERT 08-416

DAM: SEI160378 SEIFERT BELMONT 160378

SEI06MS01 06 OAK

SEI080014 SEIFERT 08-14

SEI040020 SEIFERT 4-20



A very attractive, light red, Homozygous Poll, with a low MCW (mature cow weight) EBV and favourable DTC (negative days to calving) and EMA (eye muscle area) in the top 40%. His dam is a young stayer on her 3rd calf in row.

June 2020 Belmont Red GROUP BREEDPLAN

	GL	BW	200	400	600	MC	Milk	SS	DC	CW	EMA	Rib	Rump	RBY	IMF	Domestic	Export
EBV	-0.2	3.9	18	15	26	20	9	-0.5	-2.7	22	2.6	0.1	0.5	0.5	0.1	\$12	\$17
Acc	38%	75%	73%	73%	76%	70%	39%	73%	38%	61%	57%	60%	58%	46%	53%		

Breed Avg. EBVs for 2018 Born Calves

EBV	-1.1	+2.4	+18	+22	+32	+40	+8	+1.5	-1.7	+24	+2.3	-0.2	+0.4	+0.6	+0.2	+\$20	+\$24
-----	------	------	-----	-----	-----	-----	----	------	------	-----	------	------	------	------	------	-------	-------

Traits Observed: GL, BWT, 200WT, 400WT(x2), 600WT, SS, FAT, EMA, IMF, FLT

Purchaser \$

Seifert Belmont Reds have high marbling & well-muscled high yielding carcasses.

On occasion when we have had adequate numbers in the correct weight range and at the right time, we enter carcase competitions. We are chuffed that to date we have won or placed in classes in every steer competition we have ever entered.

It is widely acknowledged that Belmont Reds are highly fertile good carcase animals, however few producers know that in the CRC Meat quality trials, under both Northern Pasture and Feedlot conditions, Belmont Reds surpassed the Angus in marbling under northern pasture conditions; or that a 'Signature Beef' Angus x Belmont Red composite won silver at the World Steak Branded Beef Challenge (UK 2016) to beat a full blood Wagyu.

About fifteen years ago CRC analysis showed the likely returns from infusion of Brahmans into the northern herd were slowing. Results from the CRC's (and other) northern crossbreeding study suggested significant gains could be derived in the north from using Sanga infused tropically adapted composites such as the Belmont Red, designed to improve product quantity and quality, relative to the Brahman, without compromising adaptation to environmental stressors.

Hence, an economic evaluation was undertaken at herd and northern Australian industry level, to examine the effect of changing 25 % of the Brahman herd in northern Australia

over a 10-year period (i.e. by 2013) to a tropically adapted infused system.

Under a grain-finishing scenario, the Extra Gross Margin for the Tropically Adapted Composite relative to Brahman was conservatively estimated to be \$76 /AE due to increased fertility, earlier turn off, earlier finishing, increased growth rate and feed efficiency, and improved meat tenderness and marbling. Today the profit margin would be much higher.

50/kg tenderness premium on 60% of fed steers	\$ 9	Extra Gross Margin = \$52/AE (+ \$7 and \$24 from base model)
10c/kg marbling premium on 15% of fed steers	\$ 5	
Growth rate and feed efficiency differences	\$38	



Seifert Belmont Reds have placed or won in every steer competition they have entered

2018 : 5th and 7th 8th 9th 10th - BEEF Australia ANZ domestic 'Pen of 3 steers'

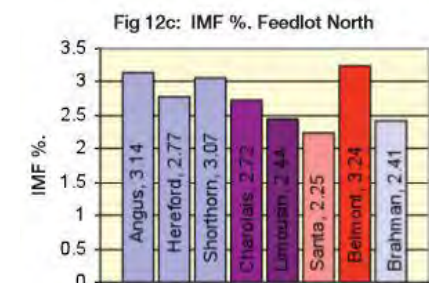
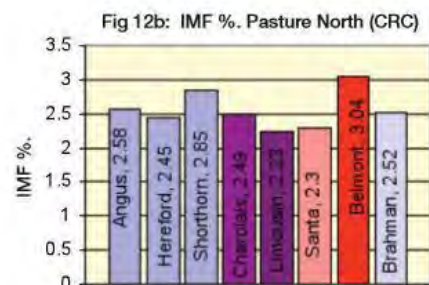
2017 : 3rd - BEEF Australia ANZ domestic 'Pen of 3 steers'

2012 : 1st - Pacific Beef Carcase Comp (ABCAS-MSA & yield) 'Individual carcass'

2012 : 2nd - Pacific Beef Carcase Comp 'Pen of 4 trade steers'

2012 : 2nd - Pacific Beef Carcase Comp 'Individual carcass'

2011 : 2nd - RNA Paddock to Plate 'Taste Section'



c. Marbling (IMF %)

"CRC" Figs. 12 a,b,c show the Intra Muscular Fat percentage (IMF%) for breeds in three environments. Intra Muscular Fat % (IMF%) is an accurate measure of marbling. Under Northern Pasture and Feedlot conditions, Belmonts had the best marbling and surpassed even the Angus.

LOT
61

SEIFERT BELMONT REDS

ID: SEI190483 **DOB:** 12/09/2018 **AGE:** 22.6 Mths **REGO STATUS:** REGISTERED
GRADE: PURE BR **HORN:** SCURRED **DNA TEST:** PH

BEL070211 BELMONT 070211

SEI130539 SEIFERT 130539

JIS030228 SEIFERT 3-228

SIRE: SEI150301 SEIFERT BELMONT 150301

MON990041 MONTPELLIER 99-41

MON030002 MONTPELLIER 03-2

MON980284 MONTPELLIER 98-284

ANIMAL: SEI190483 SEIFERT BELMONT 190483

SEI090377 SEIFERT TEDSTAR

SEI150165 SEIFERT BELMONT 150165

SEI080016 SEIFERT AURORA

DAM: SEI170504 SEIFERT BELMONT 170504

MON17 MONTPELLIER GENERIC BR SIRE

MON120452 MONTPELLIER 120452

MON18 MONTPELLIER GENERIC BR DAM



A very tidy, docile bull, with great fertility traits including SS (scrotal size) in the top 5%, DTC (days to calving) in the top 40% and with favourable moderate MCW (mature cow weight) and average growth. Scrotal Size 38cm in April.

June 2020 Belmont Red GROUP BREEDPLAN

	GL	BW	200	400	600	MC	Milk	SS	DC	CW	EMA	Rib	Rump	RBY	IMF	Domestic	Export
EBV	-1.7	2.6	18	25	31	42	8	3.3	-2.6	23	1.5	-0.5	0.1	0.6	0.2	\$23	\$24
Acc	46%	75%	72%	72%	75%	68%	46%	72%	39%	61%	55%	58%	56%	45%	51%		

Breed Avg. EBVs for 2018 Born Calves

EBV	-1.1	+2.4	+18	+22	+32	+40	+8	+1.5	-1.7	+24	+2.3	-0.2	+0.4	+0.6	+0.2	+\$20	+\$24
-----	------	------	-----	-----	-----	-----	----	------	------	-----	------	------	------	------	------	-------	-------

Traits Observed: GL, BWT, 200WT, 400WT(x2), 600WT, SS, FAT, EMA, IMF, FLT

Purchaser \$

LOT
62

SEIFERT BELMONT REDS

ID: SEI190103 **DOB:** 28/09/2018 **AGE:** 22.1 Mths **REGO STATUS:** REGISTERED
GRADE: PURE BR **HORN:** SCURRED **DNA TEST:** PH

SEI120051 SEIFERT 120051

SEI140171 SEIFERT 140171

SEI080214 SEIFERT 08 0214

SIRE: SEI160023 SEIFERT BELMONT 160023

BEL070211 BELMONT 070211

SEI130348 SEIFERT 130348

MON060200 MONTPELLIER 06-2

ANIMAL: SEI190103 SEIFERT BELMONT 190103

SEI06MS02 06 WS MULTI

DAM: SEI080214 SEIFERT 08 0214

MON980247 MONTPELLIER 98-247 (AI)

MON020028 MONTPELLIER 02-28

MON950234 MONTPELLIER 95-234



A neat and tidy ideal heifer bull with favourable low BW (birth weight) and low MCW (mature cow weight), and with great fertility traits of DTC (days to calving) in the top 20%. He is out of a proven cow who had 7 calves in a row. Scrotal Size 36cm.

June 2020 Belmont Red GROUP BREEDPLAN

	GL	BW	200	400	600	MC	Milk	SS	DC	CW	EMA	Rib	Rump	RBY	IMF	Domestic	Export
EBV	-0.6	1.3	9	14	11	25	6	0.8	-4.6	16	1.4	-0.4	-0.1	0.5	0.4	\$20	\$19
Acc	39%	76%	75%	75%	77%	72%	46%	75%	41%	63%	59%	60%	58%	47%	54%		

Breed Avg. EBVs for 2018 Born Calves

EBV	-1.1	+2.4	+18	+22	+32	+40	+8	+1.5	-1.7	+24	+2.3	-0.2	+0.4	+0.6	+0.2	+\$20	+\$24
-----	------	------	-----	-----	-----	-----	----	------	------	-----	------	------	------	------	------	-------	-------

Traits Observed: GL, BWT, 200WT, 400WT(x2), 600WT, SS, FAT, EMA, IMF, FLT

Purchaser \$

Purebred PTIC Belmont Red Heifers

This year we are offering five beautiful, quiet purebred PTIC Belmont Red heifers. Up-to-date photos and videos will be available on our webpage and on AuctionsPlus from the second week of July.

Below are listed the three sires that the heifers are in calf to. On the following pages are the heifers' full details including their due dates.

IDENTIFICATION NO.: RJS180103

	GL	BW	200 WT	400 WT	600 WT	MC WT	MILK	SS	DC	C WT	EMA	RIB	RUMP	RBY	IMF	DI \$	EI \$
EBV	-2.0	+3.4	+29	+34	+50	+67	+8	+4.0	-7.3	+44	+5.9	+0.3	+1.2	+1.0	+0.2	\$38	\$47
ACC	33%	54%	69%	69%	73%	65%	51%	71%	41%	57%	54%	57%	55%	44%	50%		
'18 EBV Av.	-1.1	+2.4	+18	+22	+32	+40	+8	+1.5	-1.7	+24	+2.3	-0.2	+0.4	+0.6	+0.2	+0.03	

IDENTIFICATION NO.: COR180010

	GL	BW	200 WT	400 WT	600 WT	MC WT	MILK	SS	DC	C WT	EMA	RIB	RUMP	RBY	IMF	DI \$	EI \$
EBV	-	+1.3	+18	+2	+14	-4	+13	+0.1	+1.5	+12	+1.5	-0.2	+0.2	+0.6	+0.1	\$5	\$8
ACC	-	43%	55%	53%	51%	49%	54%	46%	29%	44%	27%	27%	26%	27%	25%		
'18 EBV Av.	-1.1	+2.4	+18	+22	+32	+40	+8	+1.5	-1.7	+24	+2.3	-0.2	+0.4	+0.6	+0.2	+0.03	

IDENTIFICATION NO.: SEI190097

	GL	BW	200 WT	400 WT	600 WT	MC WT	MILK	SS	DC	C WT	EMA	RIB	RUMP	RBY	IMF	DI \$	EI \$
EBV	-1.3	+4.3	+34	+39	+65	+79	+8	+2.7	-0.7	+48	+5.8	0.0	-0.3	+1.4	0.0	\$31	\$42
ACC	49%	75%	70%	70%	67%	65%	45%	71%	39%	60%	55%	58%	57%	46%	51%		
'18 EBV Av.	-1.1	+2.4	+18	+22	+32	+40	+8	+1.5	-1.7	+24	+2.3	-0.2	+0.4	+0.6	+0.2	+0.03	

LOT
63

SEIFERT BELMONT REDS

ID: SEI180038	DOB: 07/09/2017	AGE: 34.8 Mths	REGO STATUS: REGISTERED
GRADE: PURE BR	HORN: HORNED	DNA TEST:	HH

SAAG91130 AG 91-130 (BONS.) (IMP Sth AF)
ISAGRC9714 GRC9714 (P) (IMP STH AF) (ET)
SAIVYN142 IVY N 142 (BONS.) (IMP Sth AF)

SIRE: VAL01B808 VALINOR B808 (AI)

VAL91V655 VALINOR 655
VAL96V182 VALINOR 96-V182 (B)
BAN870N55 BANGALLA 87-N55

ANIMAL: SEI180038 SEIFERT BELMONT 180038

BEL070211 BELMONT 070211

SEI130539 SEIFERT 130539

JIS030228 SEIFERT 3-228

DAM: SEI150144 SEIFERT 150144

TRE080023 TREMERE 080023

BEL120080 BELMONT 120080

BEL020117 BELMONT 02-0117



An IVF daughter by outside sire VAL01B808, this heifer has the highest genetic growth potential with her 600D EBV in the top 10%. She also has a particularly good EMA EBV in the top 20% positioning her in the top 5% on the domestic \$ index. PTIC to outside sire RJS180103. Due on or about the 6th November 2020.

June 2020 Belmont Red GROUP BREEDPLAN

	GL	BW	200	400	600	MC	Milk	SS	DC	CW	EMA	Rib	Rump	RBY	IMF	Domestic	Export
EBV	-1.6	2.3	29	32	53	64	5	1.8	1.7	36	3.4	-0.6	-1.3	1.3	0	\$26	\$34
Acc	58%	75%	72%	72%	75%	68%	44%	52%	34%	60%	48%	61%	60%	44%	51%		
Breed Avg. EBVs for 2018 Born Calves																	
EBV	-1.1	+2.4	+18	+22	+32	+40	+8	+1.5	-1.7	+24	+2.3	-0.2	+0.4	+0.6	+0.2	+\$20	+\$24

Traits Observed: GL, BWT, 200WT, 400WT(x2), 600WT, SS, FAT, EMA, IMF, FLT

Purchaser

\$

LOT
64

SEIFERT BELMONT REDS

ID: SEI180200 **DOB:** 18/10/2017 **AGE:** 33.4 Mths **REGO STATUS:** REGISTERED
GRADE: PURE BR **HORN:** POLLED **DNA TEST:** PH

SEI090377 SEIFERT TEDSTAR
 SEI140269 SEIFERT 140269
 MON040122 MONTPELLIER 0122 (COM)

SIRE: SEI160203 SEIFERT BELMONT 160203

TRE050123 TREMERE 050123
 SEI100078 SEIFERT 0 0078
 MON040026 MONTPELLIER 04-26

ANIMAL: SEI180200 SEIFERT BELMONT 180200

BAU992007 BONSMARA AUST. 99-2007
 TRE030179 TREMERE 030179
 TRE000950 TREMERE 000950

DAM: BEL080085 BELMONT 080085

BEL960319 BELMONT 96-319
 BEL020037 BELMONT 02-0037
 BEL990716 BELMONT 99-716



A low birthweight heifer with good average growth and favourable below average mature cow weight EBVs. PTIC to outside sire COR180010. Due on or about 31 October 2020.

June 2020 Belmont Red GROUP BREEDPLAN

	GL	BW	200	400	600	MC	Milk	SS	DC	CW	EMA	Rib	Rump	RBY	IMF	Domestic	Export
EBV	-0.4	1.1	12	22	28	35	5	0.5	-2	15	1.6	-0.6	-0.7	0.6	0	\$22	\$24
Acc	33%	59%	68%	70%	67%	64%	47%	54%	34%	57%	42%	43%	43%	38%	39%		

Breed Avg. EBVs for 2018 Born Calves

EBV	-1.1	+2.4	+18	+22	+32	+40	+8	+1.5	-1.7	+24	+2.3	-0.2	+0.4	+0.6	+0.2	+\$20	+\$24
-----	------	------	-----	-----	-----	-----	----	------	------	-----	------	------	------	------	------	-------	-------

Traits Observed: GL, BWT, 200WT, 400WT(x2), 600WT, SS, FAT, EMA, IMF, FLT

Purchaser \$

LOT
65

SEIFERT BELMONT REDS

ID: SEI180256 **DOB:** 03/11/2017 **AGE:** 32.9 Mths **REGO STATUS:** REGISTERED
GRADE: PURE BR **HORN:** POLLED **DNA TEST:** PH

BEL070211 BELMONT 070211
 SEI130539 SEIFERT 130539
 JIS030228 SEIFERT 3-228

SIRE: SEI150143 SEIFERT BELMONT 150143

MON980035 MONTPELLIER 98-035
 MON020060 MONTPELLIER 02-60
 MON990002 MONTPELLIER 99-2

ANIMAL: SEI180256 SEIFERT BELMONT 180256

SEI050065 SEIFERT 05-65
 SEI080165 SEIFERT ACHIEVABULL
 MONTPELLIER 97-70

DAM: SEI120206 SEIFERT 120206

SEI9000G2 GENERIC BELMONT SIRE
 JIS030169 SEIFERT 3-169
 SEI9000G1 GENERIC BELMONT DAM



A moderate heifer with above average growth and above average eye muscle area EBVs. PTIC to outside sire COR180010. Due on or about 31 October 2020.

June 2020 Belmont Red GROUP BREEDPLAN

	GL	BW	200	400	600	MC	Milk	SS	DC	CW	EMA	Rib	Rump	RBY	IMF	Domestic	Export
EBV	-0.6	3.3	16	31	39	69	2	1.6	-1.5	32	2.7	-0.1	0.3	0.6	0.2	\$25	\$27
Acc	27%	57%	71%	72%	75%	68%	48%	56%	39%	58%	44%	50%	49%	40%	44%		

Breed Avg. EBVs for 2018 Born Calves

EBV	-1.1	+2.4	+18	+22	+32	+40	+8	+1.5	-1.7	+24	+2.3	-0.2	+0.4	+0.6	+0.2	+\$20	+\$24
-----	------	------	-----	-----	-----	-----	----	------	------	-----	------	------	------	------	------	-------	-------

Traits Observed: GL, BWT, 200WT, 400WT(x2), 600WT, SS, FAT, EMA, IMF, FLT

Purchaser \$

LOT
66

SEIFERT BELMONT REDS

ID: SEI180392 **DOB:** 02/11/2017 **AGE:** 32.9 Mths **REGO STATUS:** REGISTERED
GRADE: PURE BR **HORN:** POLLED **DNA TEST:** PP

BEL070211 BELMONT 070211
 SEI130539 SEIFERT 130539
 JIS030228 SEIFERT 3-228
SIRE: SEI150143 SEIFERT BELMONT 150143
 MON980035 MONTPELLIER 98-035
 MON020060 MONTPELLIER 02-60
 MON990002 MONTPELLIER 99-2
ANIMAL: SEI180392 SEIFERT BELMONT 180392
 SEI050065 SEIFERT 05-65
 SEI080165 SEIFERT ACHIEVABULL
 MONTPELLIER 97-70
DAM: SEI110176 SEIFERT 110176
 MON010045 MONTPELLIER 01-45
 MON050038 MONTPELLIER 05-038
 MON020033 MONTPELLIER 02-33



A Homozygous Poll heifer with above average growth in the top 15% for 600D. PTIC to SEI190097. Due on or about 30th October 2020.

June 2020 Belmont Red GROUP BREEDPLAN

	GL	BW	200	400	600	MC	Milk	SS	DC	CW	EMA	Rib	Rump	RBY	IMF	Domestic	Export
EBV	-0.3	3.5	17	32	47	63	5	1.1	-1.6	29	1.4	-1	-0.9	0.4	0.1	\$22	\$27
Acc	29%	60%	71%	72%	70%	67%	51%	59%	43%	60%	53%	65%	48%	57%			

Breed Avg. EBVs for 2018 Born Calves

EBV	-1.1	+2.4	+18	+22	+32	+40	+8	+1.5	-1.7	+24	+2.3	-0.2	+0.4	+0.6	+0.2	+\$20	+\$24
-----	------	------	-----	-----	-----	-----	----	------	------	-----	------	------	------	------	------	-------	-------

Traits Observed: GL, BWT, 200WT, 400WT(x2), 600WT, SS, FAT, EMA, IMF, FLT

Purchaser \$

LOT
67

SEIFERT BELMONT REDS

ID: SEI180456 **DOB:** 04/10/2017 **AGE:** 33.9 Mths **REGO STATUS:** REGISTERED
GRADE: PURE BR **HORN:** POLLED **DNA TEST:**

SEI100300 SEIFERT 0 0300
 SEI130437 SEIFERT 130437
 SEI110346 SEIFERT 110346
SIRE: SEI160173 SEIFERT BELMONT 160173
 TRE050155 TREMERE 050155
 BEL090274 BELMONT 090274
 BEL010007 BELMONT 01-0007
ANIMAL: SEI180456 SEIFERT BELMONT 180456
 SEI090377 SEIFERT TEDSTAR
 SEI140017 SEIFERT 140017
 SEI080050 SEIFERT STAR ANISE
DAM: SEI160362 SEIFERT BELMONT 160362
 SEI05MS03 2005 BLK MULTI
 SEI070078 SEIFERT 0078
 JIS030209 SEIFERT 3-209



An above average growth heifer with good days to calving and scrotal size EBVs. PTIC to SEI190097. Due on or about 1 January 2021.

June 2020 Belmont Red GROUP BREEDPLAN

	GL	BW	200	400	600	MC	Milk	SS	DC	CW	EMA	Rib	Rump	RBY	IMF	Domestic	Export
EBV	-1.1	5.3	25	28	41	54	10	2.8	-3	26	0.3	0.2	1.9	0.2	0.2	\$17	\$22
Acc	38%	74%	69%	70%	66%	64%	44%	52%	35%	58%	49%	62%	63%	45%	53%		

Breed Avg. EBVs for 2018 Born Calves

EBV	-1.1	+2.4	+18	+22	+32	+40	+8	+1.5	-1.7	+24	+2.3	-0.2	+0.4	+0.6	+0.2	+\$20	+\$24
-----	------	------	-----	-----	-----	-----	----	------	------	-----	------	------	------	------	------	-------	-------

Traits Observed: GL, BWT, 200WT, 400WT(x2), 600WT, SS, FAT, EMA, IMF, FLT

Purchaser \$

LIVESTOCK AUCTION TERMS AND CONDITIONS OF SALE

CHAPTER ONE - PRELIMINARY

1. (a) A vendor is bound by these terms and conditions by offering livestock for sale by auction.
- (b) An agent (which includes an auctioneer) is bound by these terms and conditions by conducting an auction sale.
- (c) A buyer is bound by these terms and conditions by bidding at auction.
2. (a) In these terms the expression auctioneer, agent, buyer and vendor respectively includes the servants, contractors, agents of each of them. The auctioneer, agent, buyer and vendor shall be wholly responsible for the acts and omissions of their respective servants, contractors and agents. The term "auctioneer" includes, so far as the law and context permits, the vendor's agent.
- (b) When used in these terms the expressions "companion animals" means all animals originating from a property on a particular day. Where lots are split and sent to multiple establishments, then all of these animals shall be regarded as companions.
3. The following applies in interpreting these terms and conditions:
 - (a) The following words have the following meanings:
 - Fees means all levies, charges, fees, costs and other expenses incurred or relating to these terms and conditions and the sale and purchase of livestock including, without limitation, transaction levies, yard and weigh dues, cartage, advertising and rebates, and whether paid for, or incurred, by the agent;
 - Livestock means animals auctioned pursuant to these terms and conditions; and Price means the amount at which the lot has been sold to the buyer referred to in clause 7 of these terms and conditions
 - (i) plus any Fees and other expenses incurred in relation to the purchase of livestock that are payable by the buyer; and
 - (ii) plus any GST added in accordance with clause 12.
 - (b) These terms and conditions are subject to legislation or regulation in the State in which the auction is conducted and in the event of any conflict then the legislation or regulation will prevail. The provisions of these terms and conditions are in addition to, and do not derogate from, the duties and rights of vendors, agents and buyers set out in legislation and regulation in the State in which the auction is conducted.

CHAPTER TWO - STANDARD TERMS OF SALE

4. Subject to any reserve price, and to the right, prior to the fall of the hammer, of the vendor to withdraw any lot without declaring the reserve, the highest bidder shall be the buyer.
5. The auctioneer has the right to bid on behalf of the vendor provided that right is notified prior to the commencement of the sale and is subject to State law.
6. A bid cannot be made or accepted after the fall of the hammer unless, in accordance with clause 8, the auctioneer decides to put the lot up again.
7. The last price called by the auctioneer at the fall of the hammer shall be the amount at which the lot has been sold.
8. In the event of a disputed bid, the auctioneer is the sole arbitrator of the successful bidder or the auctioneer may decide to put the lot up again. The auctioneer's decision is final.
9. The auctioneer may refuse to accept any bid which, in the auctioneer's opinion, is not in the best interests of the vendor and need not give reasons for doing so.
10. A bidder shall be deemed to be a principal unless, prior to bidding, the bidder has given to the auctioneer a copy of written authority to bid for or on behalf of another person.
11. The successful bidder at a livestock auction sale must give to the auctioneer at the fall of the hammer:
 - (a) the purchaser's name; or
 - (b) the bid card number which identifies the purchaser; or
 - (c) the name of the person on whose behalf the successful bid was made; and
 - (d) the Property Identification Code (known as the "PIC") of destination.
12. The auction shall be conducted on the basis that the bid price shall be exclusive of Goods and Services Tax (GST). GST shall be added after the fall of the hammer for those sales subject to GST.
13. The vendor warrants that the:
 - (a) vendor has (or will have) the right to sell the livestock at the time of delivery; and
 - (b) buyer will obtain title on completion of the buyer's obligation under these terms and conditions.
14. If a buyer does not comply with any of these terms and conditions, which includes the requirements of State law, any livestock knocked down to that buyer may be re-sold by public auction or private contract in whatever lots and manner the auctioneer decides. The re-sale may be with or without notice and shall be at the buyer's risk. The buyer is responsible for all loss and expense arising out of a re-sale and is not entitled to any resulting profit.
15. The buyer of livestock must pay the agent the full amount of the purchase price in immediate funds on receipt of a tax invoice. Payment is required prior to delivery unless some other time for payment is specified in a written agreement between the buyer and the auctioneer that was made before the fall of the hammer. If, before delivery, payment has not been made then clauses 20 to 23 apply.
16. No person may bid unless, prior to the commencement of the sale, that person has made arrangements satisfactory to the auctioneer for payment for livestock purchased. If bids in breach of this condition are inadvertently accepted, delivery shall not be given until the purchase money is paid and any law, rule or practice to the contrary is accordingly negated as far as possible.
17. (a) Cattle sold on a livestock basis that are weighed pre-sale are at the risk and expense of the buyer upon the fall of the hammer.
- (b) Cattle sold on a livestock basis that are weighed post-sale are at the risk and expense of the buyer immediately after weighing.
- (c) All livestock other than cattle sold on a livestock basis are at the risk and expense of the buyer upon the fall of the hammer.
18. (a) Subject to this clause the sale is complete on the fall of the hammer.
- (b) The time for rejection is the time commencing at the fall of the hammer and ending at the first of:
 - (i) delivery is taken by a representative of the buyer;
 - (ii) departure of the animal from the purchaser's delivery pen; or
 - (iii) one hour after the last animal is:
 - a. in the case of pre-sale weighing, sold; or
 - b. in the case of post-sale weighing, weighed.
- (c) During the time for rejection the buyer may reject any animal which is lame, blind or diseased where that condition existed prior to the fall of the hammer but could not be reasonably observed when the animal was in the selling pen.
- (d) If the purchaser rejects an animal during the time for rejection then the sale of that animal is cancelled and the animal is returned to the vendor or sold on such terms as any buyer and the agent may agree, after the agent has disclosed the reason for rejection to that buyer.
- (e) This sub-clause applies only to cattle which are sold in Queensland at auction for slaughter. The agent has responsibility for the prevention of loss or escape (but not death, sickness or injury) of those cattle from the time of the fall of the hammer, through delivery to and from the scales, to the buyer's delivery pen and on to the buyer's nominated transport. This responsibility ends at the earlier of those cattle boarding the buyer's nominated transport or sunset on the day after the sale. This sub-clause does not apply if the agent makes an announcement to that effect prior to sale.
19. (a) Subject to the right of rejection in Clause 18, all conditions and warranties expressed or implied by law are hereby excluded from the sale to the extent that the law allows. All lots are open for inspection prior to the commencement of the sale and are sold with all faults, if any. No compensation shall be given for any faults, imperfections, errors of description, number in or of any lots sold or otherwise.
- (b) Any claim or objection arising out of an error or misdescription in the provision of relevant information in terms of legislation or regulation concerning the National Livestock Identification Scheme (NLIS) must be made by 5:00pm on the seventh day after the fall of the hammer. No objection, requisition or claim against the vendor or agent in respect of such error or misdescription can be made after that time.
- (c) Any statements made by the vendor or the auctioneer whether in writing or orally to the effect that any female has been pregnancy tested or scanned positive shall mean and require only that a certificate in writing shall be

supplied to the buyer signed by a qualified veterinary surgeon or certified scanner certifying that the said female has been tested or scanned on the date specified in the certificate and that in the opinion of the surgeon or scanner the female was pregnant on that date.

- (d) For cattle, the agent undertakes to make every reasonable effort to ensure that any NLIS cattle device number is transferred from the saleyard account to the purchaser's account on the NLIS Database no later than midnight on the day of the sale.
- (e) Where livestock have a food safety or market eligibility status derived from the NVD and/or the NLIS/ERP database, the buyer will inform the buyers by presale catalogue in conjunction with vendor branding and/or announce the status prior to the offering of those lots.
20. If delivery is made to, or possession obtained by, the buyer or its representative before full payment of the Price, then until full payment is received, the buyer:
 - (a) does not acquire title to the livestock;
 - (b) holds the livestock as bailee only for the vendor;
 - (c) must act in a fiduciary capacity in its relationship with the vendor;
 - (d) must store the stock separately or so that they are readily distinguishable from other livestock owned by the buyer;
 - (e) is responsible for the safety and well being of the livestock;
 - (f) may make a bona fide sale for market value of any or all of the livestock. As between the buyer and the subsequent buyer, the sale shall be made by the buyer in its own name and not as agent for the vendor, however as between the vendor and buyer, the sale shall be made as bailee and agent for the vendor; and
 - (g) must keep and account for the proceeds of any subsequent sale separately from its other money and hold those proceeds, together with the benefits of any rights against subsequent buyers, on trust for the vendor.
21. The buyer agrees that:
 - (a) clause 20 creates a registrable security interest under the personal Property Securities Act 2009 (PPSA);
 - (b) the buyer acknowledges the rights of the vendor (and/or the agent is clause 23 applies) to register a financing statement under the PPSA with respect to the security interest created by this clause;
 - (c) the livestock are collateral for the purpose of the PPSA;
 - (d) to the extent permitted, the buyer waives any right the buyer has under the PPSA to receive notices;
 - (e) the date upon which the security interest created by this clause comes into force is the first date on which livestock are delivered pursuant to these terms and conditions; and
 - (f) if payment is not made in accordance to clause 15, but delivery is made to, or possession obtained by, the buyer or its representative, interest may be charged at the rate usually charged by the agent for overdue accounts on any amounts which remain owing at any time.
22. The buyer may not make any claim against the vendor for actions by the vendor or its agent under clauses 20 or 21 and indemnifies the vendor and its agent against any loss, damage, costs, expenses, penalties, fines or claims suffered by the vendor, the agent or any person or entity arising from the vendor exercising its rights under clauses 20 or 21.
23. Clause 23 applies whenever the agent pays the vendor before being paid by the buyer, which the agent is not bound to do. The agent is then the del credere agent of the vendor at law.
- 23.2. The vendor hereby gives notice to the buyer of the assignments referred to in clause 23.3.
- 23.3. When this clause applies, in addition to any rights of the agent that arise by operation of the law, the parties agree that, subject to clause 23.6 the agent is subrogated to all rights of the vendor under these terms and conditions against the buyer.
- 23.4. Title to the livestock does not pass to the agent or a nominee of the agent unless the agent, by written notice to the vendor, notifies the vendor that it is to be transferred to the agent or a nominee of the agent.
- 23.5. The vendor acknowledges that the agent may take enforcement, repossession or other action to recover any livestock for which the buyer has not paid in full, or the Price of such livestock, owing by the buyer under these terms and conditions:
 - (a) when this clause does not apply, as agent of the vendor (including by reselling the livestock); and
 - (b) when this clause applies, on the agent's own behalf exercising the rights of the vendor by subrogation or assignment under these terms and conditions (whether in the vendor's name or not) and, where title to the livestock has not passed to the agent, by selling the livestock as agent of the vendor without the agent having to account to the vendor for the proceeds of sale.
- 23.6. The agent may at any time, assign, transfer, securitise or otherwise dispose of all or any of its rights under these terms and conditions and any debts created pursuant to it (including, without limitation, the rights assigned to it under clause 23.3).
- 23.7. The vendor hereby irrevocably appoints the agent as the vendor's attorney:
 - (a) do at any time and in any manner as the agent thinks fit all acts necessary or desirable to perfect or improve the rights and interests afforded, or intended to be afforded, to the agent under these terms and conditions; and
 - (b) appoint one or more sub-attorneys to do anything that the agent may do as the vendor's attorney.
- 23.8. These terms and conditions do not render the agent liable to the buyer as vendor nor entitle the buyer to set off against the agent any right the buyer may have against the vendor or otherwise.
- 23.9. The buyer acknowledges that the provisions of this clause 23 are intended solely for the benefit of the agent (and its assigns) and the vendor. The liabilities and obligations of the buyer will not be in any way affected:
 - (a) by this clause 23, other than as it expressly provides; or
 - (b) by the failure of the agent or the vendor or either of them to comply with the terms of this clause 23.
- 23.10. The buyer must pay all amounts payable to the vendor or the agent under these terms and conditions without any deduction, withholding, set off or counterclaim whatsoever, whether the benefit of a deduction, withholding, set off or counterclaim is alleged to exist in favour of the buyer as against the vendor or the agent in any capacity whatsoever or any other person including any assignor of the vendor's or the buyer's interests under these terms and conditions.
24. (a) The agent agrees that he is liable to pay to the vendor the Price, less such commission as is agreed between the vendor and the agent, and in the absence of any agreement such amount as is reasonable, and less the Fees that are payable by the vendor that were incurred by the agent on behalf of the vendor in relation to the sale of the livestock.
- (b) In the event that the buyer pays the Price or part of it direct to the vendor then the agent has no liability to the vendor for the amount of such payment. Further, if the agent pays the vendor any amount which the buyer also pays direct to the vendor in respect of the same livestock, then the vendor must repay the agent that amount and the agent may debit that amount to an account held in the name of the vendor by the agent.
- (c) Regardless of whether or not a sale has occurred the agent may, but is not under obligation to do so, instead of deducting payments owed to it by the vendor, debit the amount of the commission and fees to an account held in the name of the vendor by the agent.
25. (a) The auctioneer has been retained by the vendor as auctioneer for the purpose of selling the livestock comprised in the lots. The terms of engagement between the auctioneer and the vendor do not extend to the provision of advice by the auctioneer to the vendor in relation to the safety or otherwise of the sale ring, the saleyards and the surrounding environments.
- (b) The vendor, the agent and the buyer agree to comply with their several duties under the Australian Welfare Standards and Guidelines for the Land Transport of Livestock and further to consign, manage, receive, transport and treat livestock in accordance with any other or additional requirements of animal welfare legislation specific to the State or States in which livestock are consigned, managed, received, transported and treated in the course of the auction process.

CHAPTER THREE - VENDOR WARRANTY FOR CORRECT PRESENTATION AND DECLARATION

26. This chapter applies only in the case of livestock and their companion animals sold at auction for slaughter when the buyer is the slaughterer and the livestock are transported direct from the sale yard to the meatworks at which they are

slaughtered. This chapter does not apply if the buyer is a trader who subsequently resells the livestock to a slaughterer. A slaughterer is any person who pays the AMPC Processor levy.

27. The warranty of a vendor is that livestock and their companion animals offered for sale at auction:
 - (a) pass DAFF and other regulatory authority requirements and inspections at the time of slaughter; (DAFF refers to Federal Government Department of Agriculture, Fisheries and Forestry);
 - (b) are of merchantable quality;
 - (c) carry an NLIS device in accordance with State law;
 - (d) in the case where a representation has been made in the pre-sale catalogue that the livestock have particular characteristics or are fit for a particular purpose or market, and such representations are based on information in the National Vendor Declaration, the livestock will have those characteristics or will be fit for the particular purpose or market; and
 - (e) all information in any National Vendor Declaration provided by the vendor is true, complete and correct in all material respects.
28. In the event of a breach by the vendor of the vendor's warranty and provided such breach is notified by the buyer to the agent by 5:00pm on the 7th day after the fall of the hammer then the buyer is not liable to pay the portion of the Price of such of the vendor's livestock to which the breach applies.
29. However if the breach by the vendor is such that the livestock are not rejected outright but are instead downgraded then the buyer will pay the value of the livestock at their next highest and best use.
30. In the case of a breach by the vendor of the vendor's warranty then the vendor will also be liable to the buyer for any further losses which the buyer might establish but the buyer will take all reasonable steps in co-operation with the agent and vendor to mitigate both the effect of the breach and the amount of any loss.
31. Where a sentinel animal of a lot tests positive for chemical residue, or foreign material contamination and provided such test is certified and notified as required by these vendor warranty terms, then:
 - (a) the buyer will be entitled to delay payment for the price of all livestock in that lot; or
 - (b) the vendor has the option, at the vendor's cost, of collecting the companion animals and returning them to the vendor's property; or of having the livestock slaughtered in which event the risk of further condemnations will be that of the vendor. Where product integrity is potentially jeopardised, the Processor has the right to refuse slaughter and send the livestock back to the consigning property at the vendor's cost.
32. The auctioneer is liable to the buyer in respect of any breach of the vendor's warranty arising out of:
 - (a) any error, by the auctioneer, of transcription of information from the National Vendor Declaration completed by the vendor to the pre-sale catalogue or the buyers post-sale summary;
 - (b) any failure by the auctioneer to notify the buyer, prior to bidding, of any breach by the vendor of the warranty of the vendor if the buyer establishes that the agent is aware of such breach prior to the sale; and
 - (c) any failure by the auctioneer to disclose prior to bidding, and in the pre-sale catalogue, that the vendor has failed to provide a National Vendor Declaration that is complete in all material aspects.

CHAPTER FOUR - OWNERS RISK FOR CONDITION OF CATTLE

33. This chapter applies only in the case of cattle and their companion animals sold at auction for slaughter when the buyer is the slaughterer and the cattle are transported direct from the sale yard to the meatworks at which they are slaughtered. This chapter does not apply if the buyer is a trader who subsequently resells cattle to a slaughterer. A slaughterer is any person who pays the AMPC Processor levy.
34. Owners risk reflects the producer's responsibility to provide slaughter cattle for sale that are fit for human consumption. Cattle are fit for human consumption if they are not condemned as unfit by the relevant government department. Owners risk applies if the condemnation is due to a condition in the animal which the buyer establishes, by the certificate issued by the relevant government department, existed prior to the fall of the hammer.
35. A buyer with the benefit of owners risk protection is not liable to pay the Price of that animal to the vendor. The buyer remains nevertheless liable for all costs incurred after the fall of the hammer in transport, slaughter, testing and disposal of the animal.
36. Owners risk protection is available to the buyer of cattle to which this chapter applies if all of the following are satisfied:
 - (a) a certificate is issued by the relevant government department which states the relevant NLIS RFID tag number and PIC, the date of the certificate, the reason for condemnation and that the reason for condemnation existed prior to the fall of the hammer;
 - (b) the certificate is received by the selling agent either in its original form or by fax by 5:00pm on the 7th day after the fall of the hammer; and
 - (c) if the condemnation is due to chemical residue the certificate follows testing in a laboratory approved by the relevant government department which establishes maximum residue limits in excess of the Australian limit.
37. Owners risk does not apply, and the buyer must pay for the cattle, if the reason for condemnation is any of the following:
 - (a) bruising,
 - (b) fever,
 - (c) partial condemnation, or
 - (d) emaciation.

CHAPTER FIVE - NOTICES REQUIRED BY STATE LEGISLATION

- NSW Legislation**
 Property, Stock and Business Agents Act 2002 Warnings
 Penalties for collusive practices. It is an offence against the Property, Stock and Business Agents Act 2002 for a person to do any of the following as a result of a collusive practice, or to induce or attempt to induce another person by a collusive practice to do any of the following:
- (i) to abstain from bidding; or
 - (ii) to bid to a limited extent only; or
 - (iii) to do any other act that might prevent free and open competition.
- Severe penalties may be imposed on persons convicted of collusive practices. The auctioneer has the right to make one bid on behalf of the vendor if the auctioneer clearly and precisely announces that fact prior to the sale.
- Tasmanian Legislation**
 The auctioneer must not appear to acknowledge a dummy bid. A buyer must not give, agree to give or offer a gift or other consideration to a person for abstaining from bidding and a person must not accept any gift or consideration for abstaining from bidding.
- A person must not participate in collusive practices by way of making or receiving an unlawful promise to abstain from bidding, not to bid except to a limited extent or to do any other thing which may prevent free and open competition.
- Western Australian Legislation - Auction Sales Act 1973 531 NOTICE**
 It is an offence to:
- (i) induce or attempt to induce another person to abstain from bidding by means of a promise, expressed or implied, that the other person will have the right to elect to take over as buyer or to toss or draw lots to establish who is to become the owner;
 - (ii) abstain or agree to abstain from bidding as a result of such a promise;
 - (iii) knowingly enter or permit or cause to be entered in the auctioneer's record any name other than that of the actual successful bidder;
 - (iv) enter in the auctioneer's record the name of the buyer other than that of the actual successful bidder; or
 - (v) in the case of successful bidder supply wrong information as to the name of the buyer to the auctioneer or to any person, firm or corporation on whose behalf the sale is conducted.

The vendor, or any person on behalf of the vendor, or the auctioneer have the right to make no more than three bids.

EBV Explanatory Notes

Estimated Breeding Values (EBVs)

An animal's breeding value can be defined as its genetic merit for each trait. While it is not possible to determine an animal's true breeding value, it is possible to estimate it. These estimates of an animal's true breeding value are called EBVs (Estimated Breeding Values). EBVs are expressed as the difference between an individual animal's genetics and the genetic base to which the animal is compared. EBVs are reported in the units in which the measurements are taken (e.g. kilograms for the weight EBVs). Thus a value of +12 kg for 400 day weight means the animal is genetically superior by 12 kg at 400 days compared with the genetic base of the relevant cattle population. On average, half of this difference will be passed on to the animal's progeny.

Gestation Length: Provide an estimate of genetic differences between animals in gestation length. They are expressed in days. Lower or more negative Gestation Length EBVs are considered to be more favourable.

Birth weight: Estimates of genetic differences between animals in calf birth weight. They are expressed in kilograms (kg). Small, or moderate, Birth Weight EBVs are more favourable.

200 Day Growth: Estimates of the genetic differences between animals in live weight at 200 days of age due to their genetics for growth. They are expressed in kilograms (kg) and are a measure of an animal's early growth to weaning. Larger, more positive, 200 Day Growth EBVs are generally more favourable.

400 Day Weight: Estimates of the genetic differences between animals in live weight at 400 days of age. They are expressed in kilograms (kg) and are an important trait for breeders turning off animals as yearlings. Larger, more positive, 400 Day Weight EBVs are generally more favourable.

600 Day Weight: Estimates of the genetic differences between animals in live weight at 600 days of age. They are expressed in kilograms (kg) and are an important trait for breeders targeting the production of animals suited for heavy weight grass or grain fed markets. Larger, more positive, 600 Day Weight EBVs are generally more favourable.

Mature Cow Weight: Estimates of the genetic differences between cows in live weight at 5 years of age. They are expressed in kilograms (kg). Animals with higher, more positive Mature Cow Weight EBVs would be expected to produce progeny with a higher mature weight than animals with lower Mature Cow Weight EBVs.

Milk: Provide an estimate of the maternal contribution of a dam to the 200 day weight of her calf. In the case of sires, this estimates the maternal contribution that his daughters will make to the 200 day weight of their progeny. The Milk EBV is expressed in kilograms and indicates the expected difference in the weight of the calf at 200 days due to the maternal contribution of the cow. Larger, more positive, 200 Day Milk EBVs are generally more favourable, depending on the environment.

Scrotal Size: Provide an estimate of the genetic differences between animals in scrotal

circumference at 400 days of age. Scrotal Size EBVs are expressed in centimetres (cm). Larger, more positive, Scrotal Size EBVs are generally more favourable.

Days to Calving: Estimates of genetic differences between animals in the time from the start of the joining period (i.e. when the female is introduced to a bull) until subsequent calving. Days to Calving EBVs are expressed in days and are calculated from the joining records submitted for both heifers and mature cows. Lower, or more negative, Days to Calving EBVs are generally more favourable.

Carcase Weight: Estimates of the genetic differences between animals in hot standard carcass weight (as defined by AUSMEAT) at 650 days of age. They are expressed in kilograms (kg). Larger, more positive, Carcass Weight EBVs are generally more favourable.

Eye Muscle Area: Estimates of the genetic differences between animals in eye muscle area at 12/13th rib site in a standard weight steer carcass. They are expressed in square centimetres (cm²). Larger, more positive, EMA EBVs are generally more favourable.

Rib Fat: Estimates of the genetic differences between animals in fat depth at the 12/13th rib site in a standard weight steer carcass. They are expressed in millimetres (mm). More positive or more negative Rib Fat EBVs may be more favourable, depending on your breeding goals relating to the finishing ability of your animals

Rump Fat: EBVs are estimates of the genetic differences between animals in fat depth at the P8 rump site in a standard weight steer carcass. They are expressed in millimetres (mm). More positive or more negative Rump Fat EBVs may be more favourable, depending on your breeding goals relating to the finishing ability of your animals.

Retail Beef Yield: Estimates of genetic differences between animals in boned out retail beef yield in a standard weight steer carcass. They are reported as differences in percentage (%) yield. Larger, more positive, RBV EBVs are generally more favourable.

Intramuscular Fat: Estimates of genetic differences between animals in intramuscular fat (marbling) at the 12/13 rib site in a standard weight steer carcass. They are reported as differences in percentage (%) IMF. Larger, more positive, IMF EBVs are generally more favourable.

Flight Time: Estimates of genetic differences between animals in temperament. They are expressed as differences in the number of seconds taken for an animal to travel approximately 2.0 metres after leaving the crush. Higher (i.e. Longer) Flight Time EBVs are more favourable.

Shear Force: Estimates of genetic differences between animals in meat tenderness. They are expressed as differences in the kilograms of shear force that are required to pull a mechanical blade through a piece of cooked meat. Lower, more negative, Shear Force EBVs are more favourable.

EBV Accuracy

The "accuracy" figure produced with each EBV provides an indication of the amount of information that has been used in the calculation of that EBV. The higher the accuracy,

the more likely the EBV is to predict the animal's true breeding value and the lower the likelihood of change in the animal's EBV as more information is analysed for that animal, its progeny or its relatives.

Interpreting Selection Indexes

The Selection Index value for an animal is effectively an EBV of the animal's profitability in that particular commercial production scenario and market. Ranking seedstock animals on their Selection Index value sorts them based on their progeny's expected profitability for the targeted production system.

Selection Indexes are expressed as "net profit per cow mated". For example, if we compare a bull with an Index of +\$60 with a bull that has an Index of +\$30, we can estimate that the difference in net profit from the progeny of the bulls would be:

$$\begin{aligned} &= \frac{1}{2} \times \text{difference in Index} \\ &= \frac{1}{2} \times (60-30) \\ &= \$15 \text{ per cow mated} \end{aligned}$$

N.B. We need to multiply by $\frac{1}{2}$ because only half the progeny's genes come from the sire.

It is important to note that this difference includes profit across the entire production chain from joining to slaughter and also considers the long term profit generated by a sire's daughters (if a self-replacing Selection Index).

Using Selection Indexes

As a guide to using Selection Indexes, it is recommended that producers complete the following steps:

- (i) Identify the Selection Index of most relevance
- (ii) Rank animals on the Selection Index
- (iii) Consider the individual EBVs of importance
- (iv) Consider other traits of importance

Belmont Australia Selection Indexes

There are currently two different selection indexes calculated for Belmont Australia animals.

Domestic Steer Index – Estimates the genetic differences between animals in net profitability per cow joined for an example self-replacing commercial herd (run in subtropical environment) producing steers for the domestic trade. This index assumes that the steer progeny are pasture grown and finished and marketed at 460 kg live weight (240 kg HSCW and 6 mm P8 fat depth) at 16 months of age. Daughters are retained for breeding.

Export Steer Index – Estimates the genetic differences between animals in net profitability per cow joined for an example commercial herd (run in a sub-tropical environment) producing steers for the export trade. This index assumes that the steer progeny are pasture grown and finished and are marketed at 680 kg live weight (370 kg HSCW and 12 mm P8 fat depth) at 30 months of age. Daughters are retained for breeding.

Disclaimer

The GROUP BREEDPLAN Estimated Breeding Values (EBVs) contained within this sale catalogue were compiled by the Agricultural Business Research Institute (ABRI) from the data supplied by breeders. Neither Belmont Australia nor ABRI oversee or audit the collection of this data.



BUYERS INSTRUCTIONS

(No verbal instructions accepted)



NAME _____

BID CARD NO _____ PIC _____

ADDRESS _____

POSTCODE _____

PHONE _____

EMAIL _____

ACCOUNT TO (AGENT) _____

LOTS PURCHASED _____

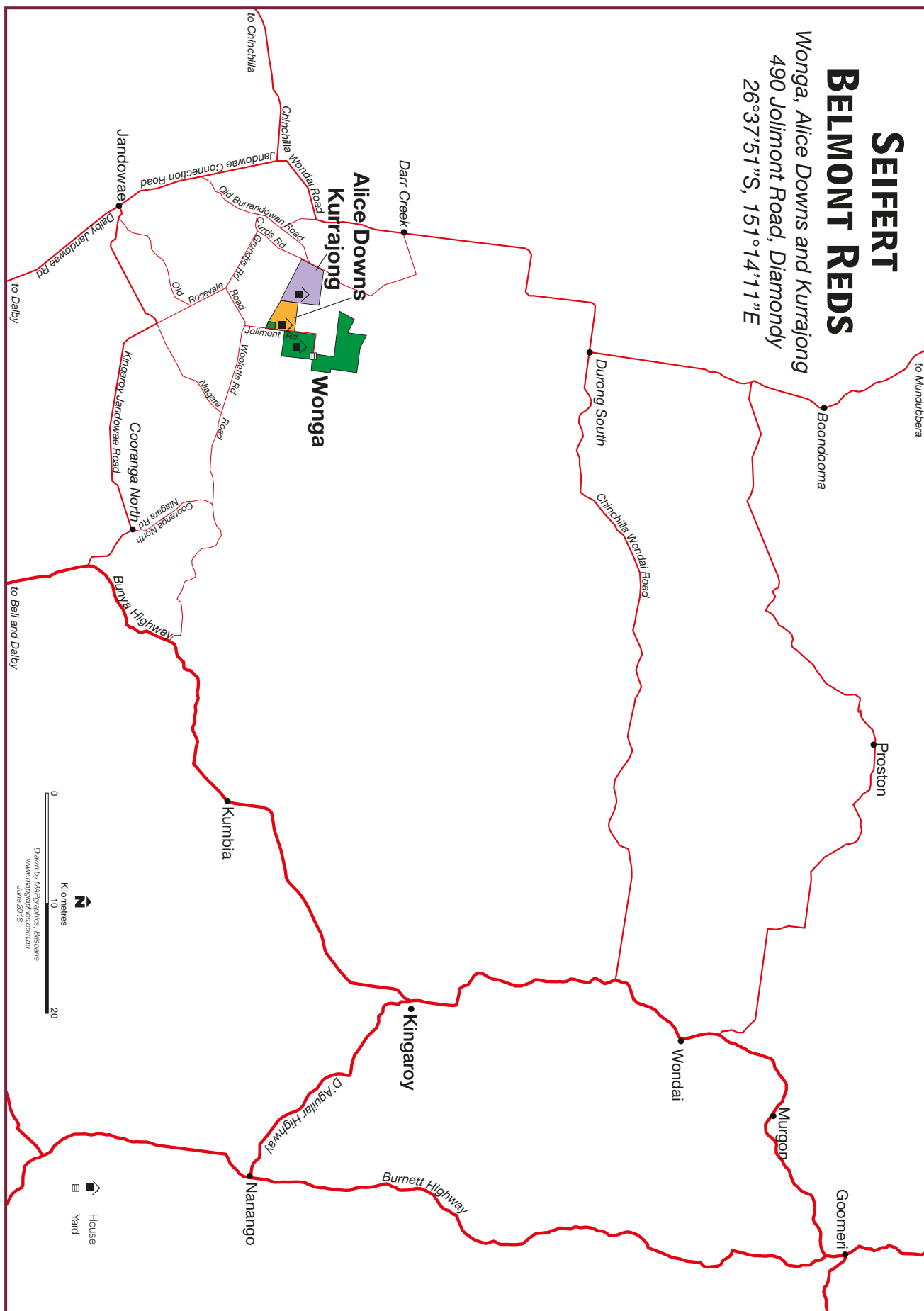
TRANSPORT DETAILS _____

INSURANCE - YES/NO FEEDING - YES/NO

FURTHER INSTRUCTIONS _____

SIGNED _____ DATE _____

Map - Seifert Belmont Reds





*Ian and Jeanne sincerely
thank the generous support
of our sponsors*



APPENDIX A

SEIFERT BELMONT RED SALE 2020 BULL SUPPLEMENTARY SHEET

LOT #	Society Id	Birth Date	Sire	Poll	MORPH%	MOT%	SS	Wt	EMA	Rib	Rump	IMF
				(DNA)	5\5\2020				14\7\2020			
1	SEI190001	20/08/2018	150301SEI	PH	82	80	43	772	123	7	9	4.2
2	SEI190101	26/09/2018	01B808VAL	PH	84	75	38	774	118	10	12	6.3
3	SEI190541	10/08/2018	150143SEI	PH	77	70	44	752	123	9	11	4.8
4	SEI190149	5/09/2018	170405SEI	PP	78	80	45	844	133	7	10	6.2
5	SEI190591	30/09/2018	150143SEI	PP	83	80	42	816	132	9	12	4.6
6	SEI190571	12/10/2018	150143SEI	PH	76	75	41	786	128	9	13	5.8
7	SEI190527	1/10/2018	150143SEI	PH	79	75	45	804	126	6	9	4.6
8	SEI190661	7/10/2018	160037SEI	PH	77	70	43	816	130	9	12	4.2
9	SEI190177	19/09/2018	170191SEI	PH	73	70	43	774	136	7	9	5.4
10	SEI190697	1/11/2018	150143SEI	PH	83	75	40	736	127	8	9	4.6
11	SEI190179	15/10/2018	170107SEI	PH	72	70	45	746	131	6	7	4.1
12	SEI190125	6/09/2018	170191SEI	PH	82	70	46	780	131	12	15	5.2
13	SEI190471	15/11/2018	160037SEI	PH	76	60	38	792	126	10	13	6.3
15	SEI190153	10/10/2018	170097SEI	PP	78	80	39	750	125	8	12	4.8
16	SEI190071	19/09/2018	01B808VAL	PH	78	70	43	746	121	6	10	4.8
17	SEI190011	9/08/2018	150301SEI	PH	79	75	39	722	115	6	9	4.6
18	SEI190155	8/10/2018	150301SEI	PP	71	60	40	734	123	7	9	4.3
19	SEI190233	28/09/2018	150301SEI	PP	82	80	40	736	128	6	8	4.6
20	SEI190243	17/10/2018	160023SEI	PP	79	70	45	754	122	10	12	5.2
21	SEI190811	18/10/2018	170097SEI	PH	74	70	44	716	117	5	7	3.3
22	SEI190005	26/08/2018	150301SEI	PP	76	70	44	748	127	7	10	4.8
23	SEI190039	11/09/2018	170053SEI	PH	74	60	43	726	123	4	6	3
24	SEI190569	3/10/2018	150143SEI	PH	72	70	42	728	122	7	8	4.4
25	SEI190403	16/11/2018	170097SEI	PH	77	80	40	746	130	8	11	5.1
26	SEI190549	27/07/2018	150143SEI	PH	78	75	40	692	128	6	9	4.3
27	SEI190007	26/08/2018	150301SEI	PH	78	70	41	726	117	6	9	4.7
28	SEI190559	30/07/2018	150143SEI	PH	74	70	42	714	121	6	8	3.7
29	SEI190805	1/11/2018	170097SEI	PH	82	75	39	744	136	6	10	3.8
30	SEI190575	13/10/2018	170089SEI	PH	74	60	38	730	118	9	12	5.3
31	SEI190027	26/08/2018	160055SEI	PH	74	70	39	728	121	6	10	4.4
32	SEI190213	25/09/2018	160023SEI	PP	81	80	40	724	133	7	11	5.7
33	SEI190201	24/09/2018	170143SEI	PH	77	75	42	710	117	7	11	5.6
34	SEI190259	3/10/2018	170191SEI	NR	84	70	40	714	126	6	9	5.3
35	SEI190265	25/09/2018	150301SEI	PP	78	70	43	708	130	7	9	4.2
36	SEI190089	26/09/2018	160023SEI	PH	75	75	40	716	132	7	9	4.8
37	SEI190189	25/09/2018	170143SEI	PH	73	60	41	710	131	9	12	5.6
38	SEI190373	16/10/2018	170405SEI	PH	72	50	41	712	120	5	7	5.2
39	SEI190221	10/09/2018	170405SEI	PH	66	60	41	681	126	6	8	4.6
40	SEI190493	16/09/2018	150301SEI	PP	81	70	43	710	124	7	9	5.4
41	SEI190651	15/09/2018	150143SEI	PH	78	65	46	734	131	6	9	4.7
42	SEI190157	27/09/2018	160023SEI	PP	78	70	42	728	132	7	11	3.7
43	SEI190799	25/10/2018	170097SEI	PH	76	60	38	688	133	9	13	5.3
44	SEI190017	22/08/2018	150301SEI	PP	76	70	46	678	127	6	9	5.1
45	SEI190015	25/08/2018	160055SEI	PH	83	80	39	682	123	6	9	4.2
46	SEI190023	28/08/2018	160055SEI	PH	78	70	42	702	118	8	13	5.7
47	SEI190053	16/09/2018	01B808VAL	PH	80	75	41	682	122	5	8	4.3
48	SEI190087	23/09/2018	160023SEI	PH	77	60	42	688	120	10	13	6.7
49	SEI190523	29/09/2018	160055SEI	PH	76	60	39	666	125	5	8	3.8
50	SEI190545	26/08/2018	150143SEI	PH	76	80	44	652	112	8	11	5.7
51	SEI190271	3/10/2018	160023SEI	PP	72	60	40	674	128	8	11	4.8
52	SEI190329	30/10/2018	170107SEI	PH	77	70	39	652	124	5	7	5.8
53	SEI190239	13/10/2018	160023SEI	PH	83	70	42	658	132	6	7	5.6
54	SEI190033	6/09/2018	170103SEI	PH	76	75	40	678	117	8	12	5.6
56	SEI190479	9/09/2018	160055SEI	PH	82	70	40	662	118	6	8	4.6

continues on next page

SEIFERT BELMONT RED SALE 2020 BULL SUPPLEMENTARY SHEET cont.

57	SEI190307	31/10/2018	170105SEI	PH		74	75	38	640	123	5	7	4.2
58	SEI190501	20/09/2018	170267SEI	PH		79	70	37	666	120	5	6	3.3
59	SEI190169	8/10/2018	170191SEI	PH		82	85	39	670	123	10	13	5.7
60	SEI190031	1/09/2018	160023SEI	PP		79	65	37	654	114	7	11	4.5
61	SEI190483	12/09/2018	150301SEI	PH		82	60	42	630	114	6	9	4.3
62	SEI190103	28/09/2018	160023SEI	PH		82	75	39	601	111	6	9	4.8
SUPP	SEI190299	28/10/2018	160023SEI	PH		78	80	40	720	122		6	

SEIFERT BELMONT RED SALE 2020 HEIFER SUPPLEMENTARY SHEET

LOT #	Society Id	Birth Date	Sire	WT	EMA	Rib	Rump	IMF
					14\7\2020			
63	SEI180038	7/09/2017	01B808VAL	594	95	7	10	6.7
64	SEI180200	18/10/2017	160203SEI	544	88	12	14	6.3
65	SEI180256	3/11/2017	150143SEI	574	80	7	11	7.2
66	SEI180392	2/11/2017	150143SEI	594	105	8	10	5.8
67	SEI180456	4/10/2017	160173SEI	524	98	9	14	5.5



Please 'like us' on Facebook : [Seifert Belmonts and Sylvia Vale Stock Horses](#)

Ian Stark & Jeanne Seifert



'Wonga'
490 Jolimont Rd
Jandowae Q 4410
Ph: 07 4668 6125

'Flag Springs'
11315 Auburn Rd
Chinchilla Q 4413
Ph: 07 4668 6125

'Sylvia Vale'
2077 Pierces Creek Rd
Emu Creek Q 4355
Ph: 07 4668 6125

Jeanne: 0427 632 113

Ian: 0439 632 113

www.seifertbelmontreds.com

